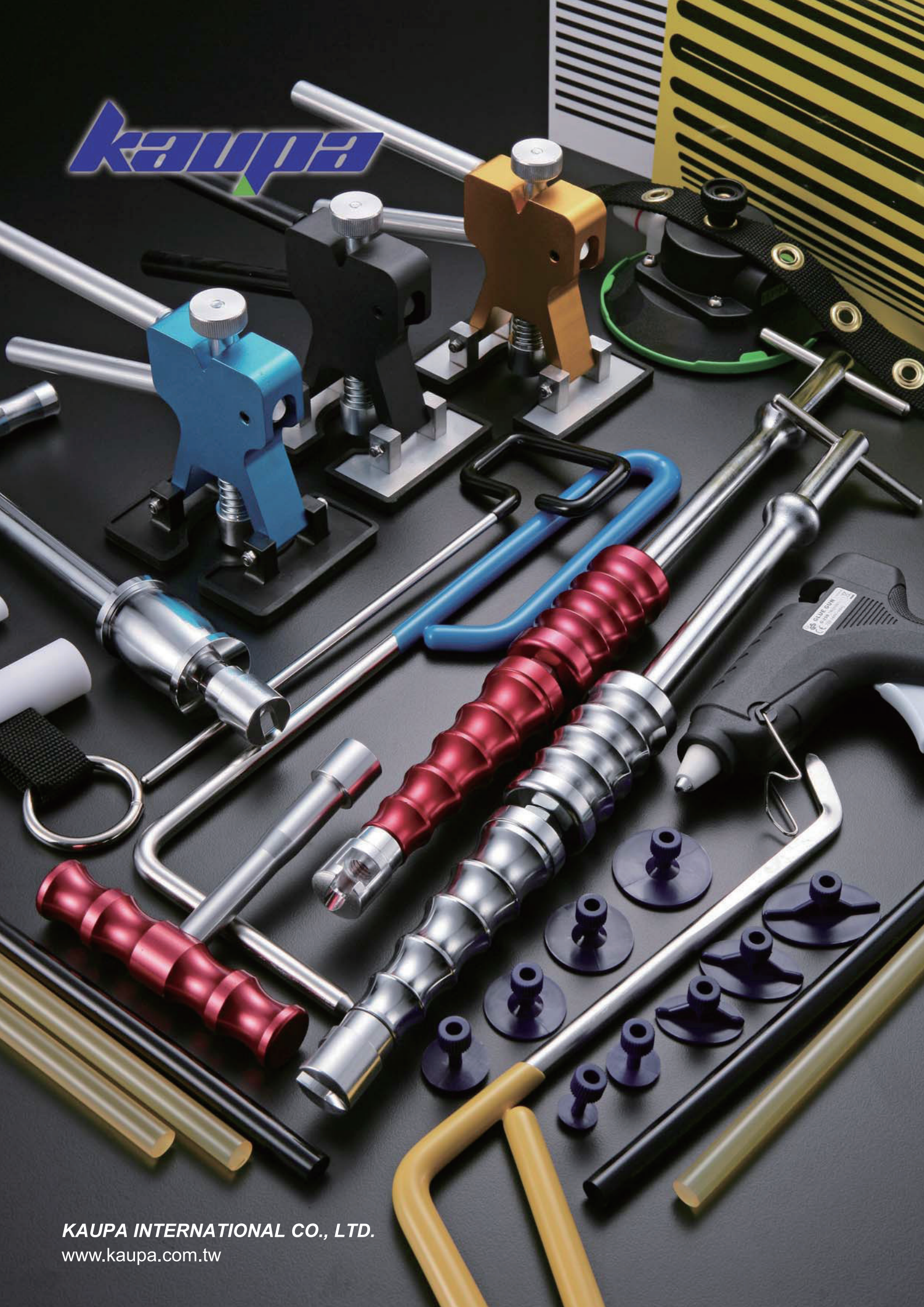


kaupa



KAUPA INTERNATIONAL CO., LTD.
www.kaupa.com.tw

INDEX

- P1-11 ■ TIMING TOOL SERIES
- P12-15 ■ BODY SERIES
- P16 ■ BRAKE SERIES
- P17-20 ■ PULLER & UNDER CAR SERIES
- P21-27 ■ ENGINE TOOL SERIES
- P28-34 ■ SCREWDRIVER & BIT SERIES
- P35-41 ■ SOCKET & TOOL SET SERIES
- P42-43 ■ OIL EXTRACTOR SERIES
- P44 ■ TESTER SERIES
- P45-47 ■ GENERAL TOOL SERIES
- P48-54 ■ WRENCH SERIES
- P55 ■ POWER TOOLS SERIES
- P56 ■ PLIERS & CUTTER SERIES
+OIL FILTER WRENCH SERIES

01 Timing Tool



■ TT-0001

BMW ENGINE TIMING TOOL KIT- M52, M54, M56

- Use with TT-9029 to fix on the camshaft.
- Special design for using before installing the accurate engine.
- Applicable: BMW engine models M52TU, M54, M56.



■ TT-9182

BMW CAMSHAFT ALIGNMENT (N47)

- Installing and removal of camshaft & variable camshaft timing unit.
- Applicable: BMW N47 / N47S 2.0 Diesel engines.



■ TT-9007

ENGINE TIMING TOOL SET FOR BMW
(N42/M44/M50/M52/M52TU/M54/M56)

- Use with TT-9029 to fix on the camshaft.
- Special design for using before installing the accurate engine.
- Applicable: BMW engine models M52TU, M54, M56.



■ TT-9008

ENGINE TIMING TOOL SET FOR BMW (N42/N46/N46T)

- Installing and removal of camshaft/variable camshaft timing unit.
- Checking and adjustment of timing.
- Applicable: E87: 118i/ 120i-46 · E46:316i/316ti/318i-N42
E90/E91:318i/320i-N46 · E85: Z4, 2.0-N46



■ **TT-9013**

ENGINE TIMING TOOL KIT FOR-NEW MINI

- Installing and removal of camshaft/variable camshaft timing unit.
- Checking and adjustment of timing.
- Engine code: W10B16AA- 2001-06 Cooper
10B16BA- 2001-06 Cooper S
W11B16AA-2001-06 One.



■ **TT-9029**

BMW (M42, M50) CAMSHAFT ALIGNMENT TOOL

- Includes: 2 swivel lock blocks and locking pin, for setting camshaft timing.
- Applicable: BMW engine code M42 & M50.



■ **TT-9036**

BMW CAMSHAFT ALIGNMENT TOOL SET (N62/N73)

- Applicable: BMW engine models N62 & N73
- Use the tool to fix on the input/output crankshaft to adjust the interval of crankshaft.
- It could check the crankshaft interval (smaller than 0.5mm).



■ **TT-9037**

PETROL ENGINE TWIN CAMSHAFT SETTING/LOCKING TOOL KIT FOR B16 (N40/N45/N45T)

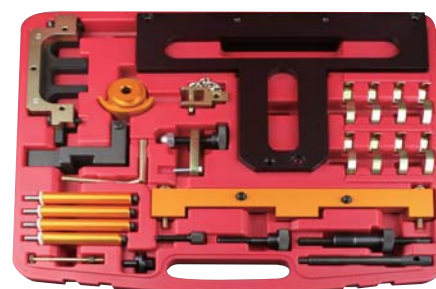
- Installing and removal of camshaft/variable camshaft timing unit.
- Checking and adjustment of timing.
- Applicable: For following BMW Models: 116 1.6 i E81/ E 87
316 1.6 i E46 / E90
316 1.6 Ci E46
316 1.6 ti E46



■ **TT-9009**

*BMW DIESEL ENGINE TIMING TOOL
M41, M51, M47 TU/T2, M57 TU/ T2: 2.0l / 3.0l*

- Installing and removal of camshaft/variable camshaft timing unit.
- Checking and adjustment of timing.
- Applicable: M41, M51, M47 TU/T2, M57 TU/T2: 2.0L/3.0L 1998 later.



■ **TT-9011**

BMW ENGINE TIMING TOOL SET FOR (N42, N46, B18/-A, B20/-A-B)

- Contains :Camshaft assembling/disassembling valve timing of camshafts.
- Fits following models :BMW : 1,3,5,X3,Z4(Type series E87-46-60-85-83-90-91).



■ **TT-9043**

BMW MINI COOPER SERPENTINE BELT TOOL KIT FOR (R50/R53)

- Use this wrench to loosen the camshaft pulley, and use the pin to lock the camshaft pulley tensioner at the same time, then remove the parts under the oil pan and the pulley.
- Applicable: BMW MINI COOPER (R50/R53). BMW engine W10/W11.



■ **TT-9044**

MINI COOPER SERPENTINE BELT TOOL KIT

- Tool is used on MINI COOPER serpentine belt.
- Applicable: BMW MINI COOPER S/W11 Engine.



■ **TT-9062**

ENGINE TIMING TOOL KIT FOR-MINI ONE / COOPER / COOPERS (N14)

- Engine timing tool for Mini Cooper
- For Mini Cooper 2001-2006, Mini cooper S 2002-2006 and N14 engine.
- Engine code : W10B16AA, W10B16BA and W11B16AA.



■ **TT-9068**

TIMING TOOLS BMW/LANDROVER GM 2.5 TD5 ENGINES

- Special design Timing tool set for BMW, Land Rover, Ople 2.5 TD5 diesel engines.
- Engine: BMW Diesel 2.5 Suitable for: BMW: 325 E36 (91_99), 525 E34 (91_94), 525 E39 (95_03), 725 E38 (96_02).
- Land Rover: Range Rover 2.5 TD5 (94_02).
- Opel: Omega B 2.5 (94_01) Engine code: 174T.



■ **TT-9069**

ENGINE TIMING TOOL SET FOR-BMW

- Special design Timing tool set for BMW, Land Rover, Opel 2.5 TD5 diesel engines.
- Engine: BMW Diesel 2.5 Suitable for: BMW: 325 E36 (91_99), 525 E34 (91_94), 525 E39 (95_03), 725 E38 (96_02).
- Land Rover: Range Rover 2.5 TD5 (94_02).
- Opel: Omega B 2.5 (94_01) Engine code: 174T1, 256T1, 256D, 25DT, X25DT.

■ **TT-9070**

BMW (M60, M62) CAMSHAFT ALIGNMENT TOOL

- Includes: 2 blocks swivel lock plate & locking pin, for setting camshaft timing.
- Applicable: BMW engine code M60 & M62.



■ **TT-9126**

BMW INJECTION PUMP PULLER TOOL

- This tool is specifically designed for holding the sprocket/chain in place when disassembling the VP44.
- Injection pump and high pressure pump common rail fitted to BMW Engines.
- Applicable: BMW M47 / M47(TU) and M57 / m57(TU)
- Diesel engines in: E46 , 318D, 320D, 330D.
E39: 520D, 530D
E38: 730D.
E60: 525D, 530D, 535D.
E61: DM 530D, 535D.
E53: X5 3.0D.



■ **TT-9169**

UNIVERSAL COUNTERHOLDER FOR CAMSHAFT SPROCKETS

- For counter holding the camshaft sprocket while loosening and tightening the camshaft bolt.
- Adjustable and lockable opening width 100-150mm



■ **TT-9163**

SUBFRAME POSITIONING BOLT SET FOR VW T5

- The kit is design for precisely aligned mounting of the subframe
- Suitable for VW T5 from 2004 / OEM T10227



■ **TT-9119 (M47)**

BMW CAMSHAFT ALIGNMENT TOOLS (M47)

- Special design for correction timing to be ,adewjemservocomg BMW M47. M57.
- Applicable: BMW M47, ,M57 diesel engines.



■ **TT-9168**

BMW FRONT CAMBER ADJUSTING KIT

- Used to adjust front camber.
- Applicable : BMW E38, E39,E46, E53, E60,E61,E63, E64, E65, E66, E67, E81, E83, E85, E86, E87, E90, E91, E92, and E93.



■ **TT-9164**

BMW CAMSHAFT ALIGNMENT TOOL -N43

- Special design for BMW 1/3/5 series with chain driven engine.
- Includes Vanos sensor alignment tool.
- BMW 1 series E81/82/87/88, 3series E90/91/92/93 and 5series E60/E61.
- Engine codes : N43 B16A/AA, N43 B20A/AA and N43 B20AY.



■ **TT-9007-A**

BMW SPROCKET EXTRACTOR / INSTALLER

- For turing sprockets when removing and installing vanos unit.
- Applicable: BMW M50/M52/S50/S52.



■ **TT-9149-A**

BMW BALANCE AXLE ALIGNMENT TOOL

- Plug in the tool for fixing the angle when you adjust the balance axle to the correct angle.
- Applicable: BMW-N40, N42, N45, N46.



■ **TT-9180**

BMW CAMSHAFT ALIGNMENT TOOL (N51, N52, N53, N54)

- Special design to locate camshaft in TDC position.
- Applicable: BMW N51, N52, N53, N54, engines.



■ **TT-9180-A**

BMW TIMING TOOL - N52

- Special design for locking flywheel in TDC position.
- Lock crankshaft to TDC position while central bolt moves, insert the plug into calibrate hole to position the crankshaft.
- Applicable: BMW N52.



■ **TT-9181**

BMW CAMSHAFT ALIGNMENT TOOL (N62, N73)

- Special timing chain tool kit for 3.6 / 4.0/ 4.4 / 4.8 /6.0 V8 engines.
- The tool kit maintaining the correct timed position of the camshafts and crankshaft.
- Application petrol engines fitted to 540i /545i/550i/645i/650i /735i/740i/745i/750i/X5.



■ **TT-9130**

BMW MINI TIMING TOOL (N12, N14)

- The kit designed to set the twin camshaft on petrol engine of BMW MINI.
- Applicable: BMW MINI COOPER, ,1.4, 1.6, 16V(N12, N14)
CITROEN C4, C4 Picasso
PEUGEOT 207, 308.



■ **TT-9060**

BENZ ALIGNMENT TOOL SET(M271)

- This retaining device design to position the camshafts in the installed position.
- Retainer to draw in the timing chain. To retain timing chain with camshaft sprockets.
- Applicable: BENZ M271.



■ **TT-9073**

BMW CAMSHAFT ALIGNMENT TOOL (M40)

- Includes: plate & locking pin, for setting camshaft timing.
- Applicable: BMW engine models M40 & M70.



■ **TT-054**

VW, AUDI TIMING TOOL SET

- Installing and removal camshaft and variable camshaft timing unit.
- Checking and adjustment of timing.
- Applicable: VW Polo, Golf, Touran, Caddy, SKODA, Octavia, AUDI A3 AND VW, AUDI(1.4,1.6 FSI, TSI).



■ **TT-9012**

FORD ENGINE TIMING TOOL SET (FOCUS / C-MAX)

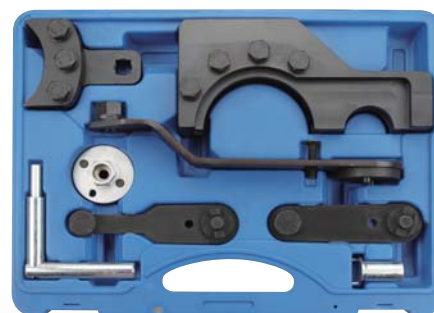
- This five piece set is essential for replacing the Cam belt on Ford Focus and C-Max.
- Petrol Engine 1.6 Ti-VCT (2003-2007), Engine Code HXDA
- Diesel Engine 2.0 TDCI (2003-2007), Engine Codes G6DA/G6DB /G6DC



■ **TT-9018**

VW, AUDI CAMSHAFT ALIGNMENT TOOL

- A specially designed tool to align and hold the camshaft.
- Applicable: AUDI 3.0L V6 5V, 2002-2005.
- AUDI A4 & 2002-2004 AUDI A6.



■ **TT-9135**

AUDI ENGINE TIMING TOOL KIT-VAG2.5/4.9D/TDI PD

- Suitable for VW T5 as of 2004, Touareg and Phaeton as of 2003 with 5 and 10 cylinder engines.
- Engine code: AXD, AXE, BAC, BLJ, BLK, BNZ, BPC, BPD, BPE



■ **TT-9176**

VW, AUDI ENGINE TIMING TOOL SET(4.2)

- Special designed to install Hall sender screens into crankshaft adjuster when setting the crankshaft timing.
- Applicable: Audi A6L, A8L 4.2 engine.
- Engine model: V89 BAT 4.2 engines.
- VW number: T40047.



■ **TT-9033**

VW, AUDI TIMING TOOL SET (20.FSI)

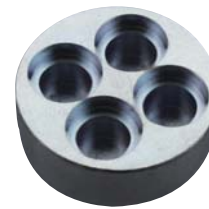
- With camshaft tools, chain tensioner retainer, locking pins tensioner bolt
- For 2.0, FSI petrol engines since 2003.
- Applicable: AUDI A3 2.0 FSI and FSI SOHC engine codes AWA, BHD, BMB VW GOLF 2.0 FSI and 2.0 FSI SOHC and Touran 2.0 FSI SOHC engine codes : AWA, AXW



■ **TT-055**

ENGINE TIMING TOOL SET-VW, AUDI

- The complete set can correct timing when replacing the timing belt of petrol and diesel engine.
- Applicable: AUDI A4, A6, A8, A11 (97-08), and VW SINCE 98.
- Engine codes: AFB, AKE, AKN, AYM, BAU, BCZ, BDG, BDH, BFC etc.



■ **TT-9182-1**

BMW CRANKSHAFT ROTATING TOOL

- Special designed to rotate the BMW diesel engine crankshaft.
- Applicable: 2.5D:M57N256D2
3.0D:M57N2306D3, M57N306D2, M57N306D3,
M57N306D5,N57N306D2, N57N306D3



■ **TT-055-19**

BVW AUDI CAMSHAFT ALIGNMENT TOOL SET

- It is convenient for working and fixing on crankshaft and making crankshaft fix.
- Applicable: VW, AUDI 1.4/1.6, and VW LUPO, POLO, GOLF IV, BORA/AUDI A2.



■ **TT-9079**

ENGINE TIMING TOOL SET Ford 2.0, 2.2, 2.4 TDDi & TDCi

Comprehensive kit for timing 2.0/2.2 and 2.4 Duratorq chain driven diesel engines. Also Includes sprocket retaining plate and access cover removal plate tools, for injection pump removal/installation.

- Ford Mondeo 2.0, 2.2, 2.4 TDDi/TDCi (2001-2007)
- Ford Transit 2.0, 2.2, 2.4 TDDi/TDCi (2000-2008)
- Jaguar X-Type 2.0D, 2.2D (2003-2008)
- LDV Convoy 2.4 TD/Tdi (2002-2006)
- Engine code:ABFA, D3FA, F3FA, D5BA, D6BA, FMBA, FMBB, FIFA, HJBA, HJBB, HJBC, HJBE, N7BA, N7BB, SDBA, QJBA, QJBB, QJBC, QJBD, D2FA, D4FA, D0FA, F4FA, FXFA, H9FB, JXFA, PHFA, ZSD424



■ **TT-9094**

CRANKSHAFT LOCKING TOOL

- Special design to lock the crankshaft on VW-AUDI, SEAT, SKODA, 2.0 TDI engine.



■ **TT-9096**

VW AUDI CAMSHAFT ALIGNMENT TOOL SET

- Contents: Injection pump locking pin, tensioner locking tool, crankshaft locking tool.
- For use on AUDI, VOLKSWAGEN, SEAT, SKODA with TDI PD and V6 engine.



■ **TT-9184**

LAND ROVER/ JAGUAR/VOLVO(T6) CAMSHAFT ALIGNMENT TOOL KIT

- Special design to hold the chain and tensioner in position during This special design engine timing kit able to align the engine camshaft and position crankshaft.
- Application for Land Rover, Jaguar, Volvo S80/ XC60/ XC70/ 3.0T, 3.2 (T6 ENGINE)- 2007 Afterward.
- OEM Code : 9997257/ 9997261/ 9997263/ 9997264/ 9997271/ 9997272/ 9997266/ 9997267/ A1406.



■ **TT-0002**

VW. AUDI CAMSHAFT ALIGNMENT TOOL

- Special design to set camshaft in the correct position.
- Applicable: VW: Passat(98-04)
AUDI: A4, A6, A8, A11 road(97-08)



■ **TT-059**

ENGINE TIMMING TOOL SET(1.2L)

- Installation and removal of camshaft / variable camshaft timing unit.
- Checking and adjusting of timing.
- Applicable: Petrol engines: VW Polo, Fox, SKODA Fabia, SEAT Ibiza/ Cordoba 12L engine, 2 and 3 cylinder, 6/12V.



■ **TT-9151**

VW 3-IN-1 BOSCH TIMING TOOL

- Suitable for timing Bosch VE injection pumps.
- Includes M8, M10, and M12 adapters.
- Use in conjunction with Dial gauge.
- Applicable: Bosch VE Fuel pump, Diesel Kiki, and Nippondenso pumps.



■ **TT-9032**

VW DIESEL ENGINE TIMING TOOL SET-BELT

- Special designed set of tools for camshaft locking, and adjusting.
- Applicable : VW-Transporter, LT, Crafter.
- Engines : 2.4D, 2.5SDI, 2.5TDI, 2.5TDI Common Rail.



■ **TT-9175**

ENGINE TIMING TOOL SET FOR OPEL / VAUXHALL, CHEVROLET 2.0 CDI

- For changing the timing belt and checking to be used as OEM EN-48245.
- Crankshaft locking pin to be used as OEM EN-48246.
- Engine code: Z20DM - Z20DMH - LLWZ20DMH - RA420
Z20SI - Z20S3 - Z20S4 - Z20S5



■ **TT-9080**

VW / AUDI ENGINE TIMING TOOL KIT

- Audi:
 - A3 1,8Turbo (AGN AGU AJQ APG APP AQA ARX ARY ARZ AUM AUQ) 1996-2003
 - A3 1,6FSI (BAG) 2003-2006
 - S3 1,8Turbo (AMK APY BAM) 1996
 - A4 1,8Turbo (ADR AEB AJL AJP ANB APU AVJ AWT) 1994-2006
 - A6 1,8Turbo (ADR AEB AJL AJP ANB APU AVJ AWT) 1994-2006
 - Cabriolet 1,8 (ADR) 1997-2000
 - TT 1,8Turbo (AJQ APP APX AUM AUQ BAM) 1998-2006
- Volkswagen:
 - Beetle 1,8Turbo (AVC) 1999-2006
 - Touran 1,6 FSI (BAG BLP) 2003-2007
 - Golf 1,8Turbo (AGN AGU AQA ARZ AUM AUQ) 1997-2005
 - Bora 1,8Turbo (AGN AGU AQA ARZ AUM AUQ) 1997-2005
 - Passat 1,8Turbo (ADR AEB ANB APT APU ARG AWT) 1996-2005



■ **TT-9183**

VOLVO ENGINE TIMING TOOL SET

- For alignment of the cam and crankshafts
- Also for correct installation of the camshafts over the cam cover
- Suitable for 4-, 5- and 6-cyl. twin cam engines (not 3.2l) until 2006 on Volvo models: 700, 800, 850, 900, 960, C70, S40, S60, S70, S80, S90, V70 -2000, V70XC, XC70, V90, XC90
- Incl. following tools:
 - 2-piece camshaft cover tool, to be used as OEM 9995454
 - crankshaft locking tool, to be used as OEM 9995452
 - camshaft setting tool, to be used as OEM 9995451
 - holder, to be used as OEM 9995453
 - 2x110 mm and 2x 85 mm screws



■ **TT-9021**

ENGINE TIMING TOOL SET FOR FORD

- Special design for gasoline engines 1.25 L, 1.4 L, 1.6 L, 1.8 L, 2.0 L etc und Zetec SE Engine
- Includes:crankshaft timing tool to be used as OEM 303-748, 999-7152, 21-259, 997152, 303-574, 21-163, 303-620, 999-7201,03-507, 999-715, 21-210
- Camshaft alignment plateto be used as OEM 303-376, 303-376B, 999-7151
- Application : Fiesta, Mondeo, Cougar, Puma, Focus, CMax..etc



■ **TT-9172**

ENGINE TIMING TOOL SET FOR AUDI 2.4 & 3.2 FSI

- For checking and adjusting the engine timing.
- Suitable for Audi V6, V8 and V10 engines with chain.
- Includes:Camshaft locking tool to be used as OEM T40070
Crankshaft locking pin to be used as OEM T40069
Chain tensioner locking pin to be used as OEM T4007



■ **TT-0013**

ENGINE TIMING TOOL SET-CITROEN, PEUGEOT

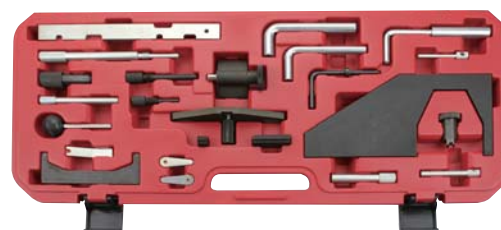
- Engine timing tools-suitable for Citroen and Peugeot 16 valve engines,e. 1.8l-16V and 2.0l 16V with engine code EW (incl. HPI engines) or example: C5, 206, 306 and 406 suitable for Citroen and Peugeot 1.9D, 2.0D, 2.2D ngine code DW8, DW10, DW12 HDI used by Citroen, iat, Peugeot and Toyota diesel engines (XUD+TUD) gasoline engines (XU+TU).



■ **TT-9153**

ENGINE TIMING TOOL SET FOR VAG 1.6 & 2.0L TDI

- Audi A1, A3 (8P) A4 (B8) A5 A6 (C6, C7), TT (8J), Q3, Q5
Skoda Fabia, Roomster, Practice
Octavia II, Suberb II, Yeti,
Seat Ibiza (6J), Leon III, Exeo, Altea, Alhambra II
VW Golf V, VI & Plus, Passat, Polo V, Jetta V, & VI,
Scirocco III, Beetle II, II Caddy, Passat B6, B7 & CC
Touran, Sharan II, T5, Amarok
includes important tools for checking and adjusting engine timing after e.g. timing belt replacement
Injection Pump Locking Pin to be used as OEM MP1-301, T20102, MP1-301, U40074, 3359
Crankshaft Setting Tool (Non bored engine) to be used as OEM T10100
Ball End Hex Key 6 mm to be used as OEMT10264
2.5mm Tensioner Pulley Locking Pin to be used as OEMT10265
3.9mm Tensioner Pulley Locking Pin to be used as OEMT40098
Sprocket Holding Tool to be used as OEMT 10051
Camshaft Sprocket Hub Puller to be used as OEM T10052
Oil Pump Balancer Shaft Alignment Tool to be used as OEM T10255



■ **TT-0007**

ENGINE TIMING TOOL SET-FORD

- Special design for:1.4 ltr.+1.6 ltr 16V+1.7 ltr.+1.8 ltr. 16V +2.0 ltr. 16V 1.4 ltr.-1.6 ltr.-1.8 ltr. and 1.9 ltr. D/TD/TDCi
- Item contains:flywheel
crankshaft
camshaft / pump shaft
fuel injection pump shaft
belt pulley
tensioning of the timing belt
- Includes adjusting gauge for camshaft, crankshaft, pumpshaft.



■ **TT-9185**

RENAULT TIMING LOCKING KIT

- Setting/Locking Tool Kit Renault Petrol 1.2 to 2.2 (Belt) D4F / D7F / E7F / E7J / F3P / F7P / F3R / J7R / F7R / J7T
- Also For Renault Diesel 1.6D / 1.9D/Turbo/dTi / 2.1D Turbo / 2.2D/Turbo (Belt) F8M / F8Q / F9Q / J8S / G8T, Chrysler Jeep Diesel 2.1D Turbo (Belt) and
- Vauxhall/Opel Diesel 1.9D / DTi (Belt)



■ **TT-9186**

DIESEL ENGINE TIMING TOOL KIT- FIAT, ALFA ROMEO, FORD LANCIA, SUZUKI, VAUXHALL, OPEL - 1.3 JTD/CDTi, / DDis / TDCi

- This timing tool is designed for Fiat 1.3 16V diesel engines. the tool also minimize the level of disassembly so the cylinder head / camshafts can be removed without removing the front end timing cover, sprockets and timing chain.



■ **TT-9129**

TIMING TOOL SET - AUDI

- A complete set for alignment, adjustment the camshaft, replacement the timing chain and etc...
- A6 \ A2 and A4 \ A4 quattro 2004-2007 with Engine code of BDW
- A4 \ A3 and A2 FSI 2004-2007 with Engine code of AUK \ BKH
- A8 \ A3 and A2 2004-2007

12 Body Series



■ **BS-9070**

PDR TAP DOWN TOOL

- PDR Tap down tool.
- Used to tapping down if you have lifted to high during the dent repair.
- Round tip to protect paint while tapping down the high spot.



■ **BS-9108**

*35MM(14oz) DEAD BLOW HAMMER
BLACK COLOR*

- 14OZ, 35MM for any kinds of repair.



■ **BS-9011**

HANDHELD SUCTION LIFTER

- Innovative pistol grip for better performance. suitable for holding side windows, dent removal and positioning floor and wall tiles. 6-8 Kg lifting capacity.



■ **BS-9047**

*BODY REPAIR SLIDE HAMMER WITH
METAL TYPE*

- Metal type Paintless dent repair style sliding hammer.
- Apply with plastic connector tip for dent repair.
- Kaupa Tool exclusive



■ **BS-9047-1**

*BODY REPAIR SLIDE HAMMER WITH
ALUMINUM TYPE*

- Aluminum type Paintless dent repair style sliding hammer.
- Apply with plastic connector tip for dent repair.
- Kaupa Tool exclusive



■ **BS-9081**

MINI PULLER

- Mini dent puller - Aluminum body design for easy operation.
- Apply with plastic connector for dent repair.



■ **BS-9069**

PDR ADJUSTABLE HAIL STRAP

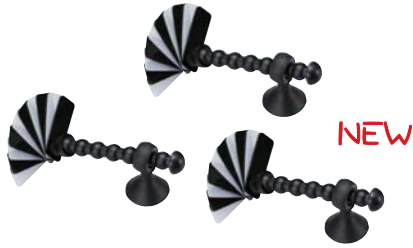
- PDR Level up support tool.
- Apply with BS-0062-1 PDR repair tools.



■ **BS-9072**

5" VACUUM MOUNTING CUP- 120MM DIA

- Suction base level support set for PDR repair tool.
- for any position to level up the PDR tools.



■ **BS-9076**
3PCS GAP CONTROLLER SET

· The gap controller is 3 dimension gauge for the car panels and windscreens. The unique design will fits all position at work. The thickness of each measure plate is 1mm and made of plastic to prevent the paint damage.



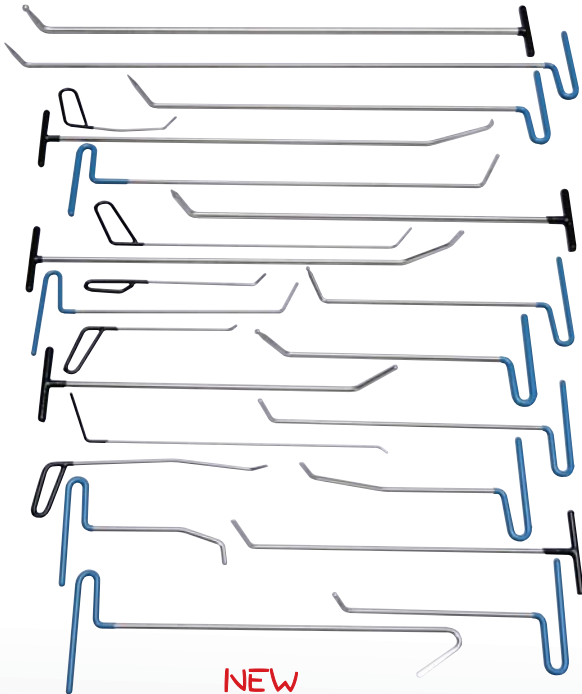
■ **BS-9037**
PDR COLOR STRIPE BOARD-YELLOW

· Future with heavy duty suction base allows technician to read dent to remove Micro lows with PDR tools. Yellow stripe line design.



■ **BS-9037-1**
PDR COLOR STRIPE BOARD-WHITE

· Future with heavy duty suction base allows technician to read dent to remove Micro lows with PDR tools. White stripe line design.



■ **BS-9085**
PDR DENT TOOL

· 23 Piece Master paintless dent repair set. easy repair your door dings, Minor dents, and Hail damage.



■ **BS-0062-1**
PAINTLESS DENT REPAIR KIT WITH COLOR SLEEVE

· The most popular paintless dent repair tools on the market for dent repair and hail damages as well as auto body cosmetics works . with color anti-slip sleeves for better working performance.



NEW

■ **BS-9130**

WIRE CUT WINDSHIELD REPAIR KIT

- Windshield with vulcanized rubber sealing can be remove without damage the dashboard
- East and safely remove any style of windshield caulking compound by wire.



NEW

■ **BS-9100**

WINDSCREEN REMOVAL TOOL SET

Contents:

- Braided wire (3 strand)
- Wire gripping handles x2
- Windscreen removal tool-cuts the adhesive around the screen.
- Wire feeder tool-designed for easy and flexible insertion of wire through polyurethane, allowing speedy removal of boded windscreen.
- Trim pad remover
- Cold knife Blade x2

PAT.



■ **BS-9018**

AUTO DENT REPAIR KIT

- Master Automative Paintless Dent Repair Kit used a special technique to repair dents in convenient way, with high molecular release agent Resin. Our repair kit restores dents in your car quickly and easily without damaging its metal and paint. The operation is very easy. After all marks are almost invisible after repairing.

PAT.



■ **BS-9018X**

MASTER AUTO DENT REPAIR KIT

- The universal master auto dent repair kits for all kinds of hail damage and dent restore. <Kaupa tool exclusive>
- 1x Mini PDR puller
- 1x Sliding hammer
- 9x Plastic connector tips
- 1x Aluminum spray bottle of glue release agent
- 1x Glue gun
- 8 x Custom made glue rod
- 1x Plastic scraper

PAT.



■ **BS-9062**

WINDSHIELD REPAIR KIT

- The kit is kaupa special designed for windshield repair.
- suction cup support set
- resin injection tube & pressure drive
- resin bottle
- razor blade
- curing strip x 10



■ **BS-9156**

4 PIECE DASHBOARD PROECTOR

- To protect the dashboard when removing the windshield
- Includes : round lip L205mm X B265mm / straight L205mm X B265mm / round lip L305mm X B465mm / straight L305 x B455mm



■ **BS-0028**

4PCS SCRAPER SET

- remove body side moldings, gaskets, decals and wheel weights.
- tough composite construction is strong enough to hit with hammer
- sizes : 3/4" / 7/8" / 1" / 1-1/2"



■ **BS-9003**

AIR INFLATION BODY TOOL SET - 6PIECE

- Design for heavy duty usages
- Rapid inflation and deflation



■ **BS-9068**

MASTER DENT PULLER SET -8 PIECE

- The deluxe aluminum body bridge puller for dent repair.
- For large dent repairing

16 BRAKE SERIES



■ BR-9036

SPEEDY BRAKE PISTON WIND-BACK TOOL

- Hand held compressor with plunger for brake pad replacement.



■ BR-9031

REAMER SET FOR ABS SENSOR LOCATING HOLE

- For cleaning the ABS sensor mounting holes
- Removes debris, corrosion, dirt and residue of defect ABS sensors.
- Follow sizes available :
- VAG, commercial vehicles $\text{Ø}18 \text{ mm} \times 34 \text{ mm}$
- VAG, BMW E36, E46, $\text{Ø}18 \text{ mm} \times 23 \text{ mm}$
- Ford, Mercedes A-Class, and Mazda $\text{Ø}15 \text{ mm} \times 23 \text{ mm}$
- BMW E38, E39, E52, E60, E61, E63, E64, E65, E66, E67, E70, E71 $\text{Ø}14 \text{ mm} \times 32 \text{ mm}$



■ BR-9037

SPEEDY BRAKE PISTON SPREADER

- Quickly spread brake pads and compress disc brake pistons for pad replacement.
- Suitable for single, double and quad piston calipers.



■ BR-9021

BRAKE THREAD REPAIR SET - 15PIECE

- The tool set is designed for re-thread with brake caliper
- Application : New VAG Since 2009.
- Included : Thread coil M12x1.5 W/Copper washer
- 1- $\text{Ø}15$ Drill
- 1- M12x1.5 Tap
- 1-Drill guide
- 1-Bearing
- 1-Coil insert tool.



■ BR-9015

BRAKE CALLIPER GUIDANCE THREAD REPAIR SET

- The defect threads are repaired with heavy duty rust - proof high grade steel threaded bush. The drilling gauge provide the easy control setup repairing job.
- Contents : M9 X 1.25 cord drill / tap
- Applicable : FORD / OPEL / VAG



■ **PC-9171**

SHOCK ABSORBER INSTALLATION TOOL

- The set is design for dismantling and assembly of shock absorbers with tension stop spring.
- The piston rod only remain in same position during the clamping process and not retracted.
- Application : BMW / MB / TOYOTA / NISSAN / FIAT / PEUGEOT / FORD..etc.



■ **PC-9005**

WHEEL BEARING TOOL

- For assembly and disassembly of wheel hub- bearing unit
- High-strength ball bearing attached with spindle
- High quality pressure plate
- Also available for all application : 62 / 66 / 72 / 78 / 82 / 85 / 85 T5 / 90 mm



■ **PC-0114**

UNIVERSAL PULLER SET

- The puller arms are made in different lengths and sizes for hard to reach spaces.
- All required clamping depths available at any time.
- Puller legs are suitable for 2-and 3 leg cross bars.

NEW



■ **PC-9180**

8PCS STRUT NUT KIT

- Comprehensive set of strut nut tool to cover many application.
- Internal * 10.5 x22mm Hex drive 3.5mm PIN
- Internal * 12.5 x22mm Hex drive 3.5mm PIN
- Internal * 14.5 x22mm Hex drive 5mm PIN
- Internal * 14 x22mm Hex drive 3mm PIN
- 5mmx60mmL 1/2*Dr.
- 5.5mmx48mmL 1/2*Dr.
- Internal * 15 external * 22 5mm PIN
- Internal * 15 external * 15.5 3mm PIN



■ **PC-9178** **NEW**
DIESEL INJECTOR PULLER

- For removal of seized diesel injectors on Mercedes-Benzs CDi 611, 612 and 613 engine code and other suitable engines injectors. w/ 4.8kg sliding hammer



■ **PC-9149**
REAR BUSH TOOL KIT - RL REAR AXLE

- Special design for removal and replacement of the bushes in the rear axle of Renault Laguna II.



■ **PC-9137-B** **NEW**
AIR IMPACT SCREW REMOVER

- Loosens rusted, corroded, undercoated, painted, dirty and over tightened screws fast and easy.
- For use with standard air hammers.



■ **PC-9137-A**
IMPACT CHISEL SET

- The tool is design for loosening rusty bolts or other under car parts
- With all profiles and dismantling



■ **PC-9144**
REAR WHEEL BEARING TOOL

- For removing / installing the rear wheel bearing
- Apply for Mercedes -Benz W124, 129, 201, 202



■ **PC-9165**
SILENTBLOCK PULLER FOR BMW

- Designed for silentblock BMW E38 / E39



■ **PC-9038**

UNIVERSAL WINDSCREEN WIPER ARM PULLER SET

- The comprehensive assortment for removal of wiper arm.
- Wipers with washer nozzle in centre of wiper arm shaft can either be pressed with impact puller or the hollow spindle.
- The Master 14 piece set also available.



■ **PC-9122**

BALL JOINT INSTALLER / REMOVER

- Special design for remove & install the ball joint on car.
- Applicable : W220 / W211 / W203



■ **PC-9125**

TRACK ROD SETTING SET

- The kit is designed for replacing tie rod without additional alignment
- Consists of : 10 and 12mm caliper / 17mm caliper for VW



■ **PC-9071 / PC-9071-1**

TENSIONER PULLEY WRENCH SET - E-PROFILE

- Length - 460mm
- 40 degree offset
- E10 , E12, E14, E16, E18
- PC-9071-1 V-BELT/ TIMING BELT WHENCH
- 13 , 15, 16, 17, 19 mm / Length : 460mm



■ **PC-9102**

CAMBER ADJUSTING TOOL

- Allow one-man adjusting
- Pressure width 135 to 175mm
- 22mm 6 edge spindle
- 3 spindle length for following application
- 75mm - Seat Toledo - VW Jetta, Golf
- 85mm - Seat Cordoba - VW Polo 95 >
- 115mm - Chrysler Voyager



NEW

■ **PC-9174**

SUSPENSION WEAR INDICATOR TOOL

- The tool is design for detecting suspension and axle joint wear.



■ **PC-0074**

HEAVY DUTY TYPE CV BOOT CLAMP PLIERS

- For assembly of new stainless steel clamp bands on drive shafts where a torque setting is required.
- 3/8" torque wrench socket is attached for better performance.



■ **PC-0103**

WHEEL HUB CAP PLIERS

- Removing hub cap
- Free size for wide application



■ **PC-9138-A**

AIR IMPACT CHISEL SET - 7PCS

- Design to impact the difficult remove bolts or ball joint units.
- With air impact gun CFM 10 / BPM 2100



NEW

■ **PC-9182**

MONDEO REAR BUSH TOOL KIT

- The kit is designed for dismantling and installing the rear wishbone / trailing arm bush
- Suitable for Ford Mondeo 2000-2007 , S-MAX , Galaxy 2006 > Volvo XC70 , V70 2007 > / Volvo XC60 / 2008> / Volvo S60, V60 2010>

■ **PC-9062-C**

CONTROL ARM LEVER

- The tool is designed for removal of control arm ball joints from wheel bearing housing.
- In 3 positions adjustable
- Total length - 1225mm



■ **PC-9037**

VW, AUDI REAR SUSPENSION TOOL

- Special design to remove and install the bush
- Applicable : VAG series

21

Engine Tool



- **ET-9185**
HOSE CLAMP SPANNER
 - The tool is designed for removing plastic and metal self-tightening hose clamps
 - Apply for all diameter hose clamp operations



- **ET-9180**
4-LINK SUSPENSION DRILL KIT SET
 - The tool is designed to test the turbo system leakage.
 - The universal type with all sizes of adaptors available.



- **ET-9167**
DUAL MASS FLYWHEEL REPAIR KIT
 - The special tool design to test the condition of Dual Mass flywheel clutch.
 - DMF fitted for gearbox and clutch removed.



- **ET-9086**
INJECTION NOZZLE PULLER
 - Used to remove the injector nozzle, when servicing/cleaning diesel injectors.
 - Compatible with Bosch, Delphi, Denso and Siemens injectors.



NEW

- **ET-9176**
6PCS CLUTCH ALIGNER TOOL FOR TRUCKS
 - The essential universal tool designed for single or double disc clutches.
 - The tool corrects alignment of the clutch and tractors to the engine.
 - 36-45mm clutch hub / 42-52 mm clutch hub.



- **ET-9177**
TURBO SYSTEM TESTER-55-60.65-70.75-80.85-90



■ **ET-9118**

CLUTCH ALIGNER TOOL FOR TRUCK

- Special design for truck clutch
- Spigot adaptor diameter sizes : 20 , 25, 27, 30mm



■ **ET-9161**

OXYGEN SENSOR WRENCH SET

- Special design for installing lambda probes
- Offset angles for easy operation
- Sizes : 19 and 22mm



NEW

■ **ET-9184**

MOTORCYCLE CHAIN TOOL KIT

- Essential tool kit for maintaining motorcycle chains.
- Includes a pair of chain link clip removal pliers.
- Also a chain stretch tool that holds the chain whilst a new split link is assembled.
- Plus a comprehensive chain link splitter and riveting tool.
- Maintains chain sizes from timing chains (2.2mm dia) to heavy duty 630 chains.
- Part of motorcycle tool range



NEW

■ **ET-9183**

27PCS GLOW PLUG TOOL SET

- Designed to remove damaged/broken glow plug from cylinder heads.
- Set include all required adaptors, centering and cleaning tools to safely remove the glow plug without damaging the engine.
- Core drill $\varnothing 8.1$ for M9 x 1.0 thread x 1PC
- Thread tap M9 x 1.0 x 1PC
- Core drill $\varnothing 9.1$ for M10 x 1.0 thread x 1PC
- Thread tap M10 x 1.0 x 1PC
- Milling cutter for glow plug electrode x 1PC
- Thread tap M8x1.0 x 1PC
- Core drill $\varnothing 5.5$ for NO.12 x 28 UNF thread x 1PC
- Thread tap NO.12 x 28 UNF x 1PC
- Adapter for power drill x 1PC
- Special drill $\varnothing 2.6$ x 1PC
- Special drill stand x 2 PC
- Tie bolt M8 x 1.0 (180mm long) x 2PC
- Glow plug extractor, M8x1 (Bearing) x 1PC
- Puller guide bushing x 1PC
- Puller holder M8x1.0 thread x 1PC
- Glow plug top remover 2.5, 3.5, 4mm (3pcs)
- Jaws driver with T-handle x 1PC
- Drill guide bushing $\varnothing 17.5$ x 38 x 1PC
- Drill guide bushing $\varnothing 17.5$ x 63 x 1PC
- Cleaning brush: 5.3mm x 100mm overall length: 300mm x 1PC
- Cleaning brush: 9mm x 100mm overall length: 300mm x 1PC
- Cleaning brush: 10mm x 100mm overall length: 300mm x 1PC
- 1/2" Sq. Drive Adapter (10mm HEX) X1pc



■ **ET-9163**

PSA HDI INJECTION NOZZLES REMOVER

- Special set for PSA HDI BOSCH and SIEMENS injectors.
- Applicable : TOYOTA, MAZDA, HYUNDAI
- Engine code : PSA2.0 HDI DW10 / DW12



■ **ET-9032**

IGNITION AND GLOW PLUG THREAD CLEANER

- For cleaning and re-cutting the threads in the cylinder head
- Prevents conglutination of plugs
- Makes it easier to renew plugs
- Made from hardened and tempered steel
- Includes following reamers: M8 x 1.00-117 mm length
M10 x 1.0-117 mm length
M12 x 1.25-140 mm length
M12 x 1.25-268 mm length
M14 x 1.25-140 mm length
M14 x 1.25-268 mm length
M18 x 1.50 -89 mm length



■ **ET-9132**

GLOW PLUG SOCKET SET SPECIFICALLY FOR FIAT / ALFA / LANCIA

- For removal of glow plugs with fixed connector cable
- Slotted sockets 8-9-10mm
- 6-pt. drive



■ **ET-9045**

INJECTOR SEAT AND SHAFT CLEANING SET

- For Bosch and Delphi injectors and glow plugs manholes
- Included : 3 injector seat cutter and 4 cleaning brush.



NEW

■ **ET-9178**

1/4"Dr. GLOWPLUG IMPACT SOCKET SET

- 8MM-12MM

- Uses Vibro- impact torque tool to loosen seized glowplugs.
- The Vibro-Impact tool has 4 low torque settings. 10, 20,30,40Nm
- With 8, 9,10,11, 12mm glowplug sockets and universal joint



■ **ET-9045-1**

GLOW PLUG REMOVAL TOOL - M10 X 1.0

- Allow repair the glow plug retaining thread without removing the cylinder head.
- The defect original thread M10 x 1 is repaired by insertion of new thread sleeve
- Suitable for Mercedes -Benz CDI engines OM 611, 612 , 613, 628, 646, 647, 648



■ **ET-9155**

FSI INJECTOR ASSEMBLY AND DISASSEMBLY KIT

- The set is suitable for VAG, SEAT, SKODA with direct injection engines and engines with pump injector units. use as OEM tool kit T10133 + T10163.
- Ncludes : puller for dismantling FSI injectors.
- Puller claw for dismantling FSI injectors
- Sliding hammer
- Mounting combustion chamber cone
- Calibration tool for combustion chamber rings
- Built-in pin for mounting the FSI injectors
- Extractor for dismantling pump injector unit.



■ **ET-9001**

VALVE SEAT MILLING CUTTER SET

- The tool is designed for cylinder heads with harden valve seats
- 6 double-sided cutters
 - Ø28-35 mm, 45° and 75°
 - Ø 37-44 mm, 30° and 75°
 - Ø37-46 mm, 45° and 68°
 - Ø 44-52 mm, 30° and 75°
 - Ø46-60 mm, 30° and 45°
 - Ø52-65 mm, 60° and 75°
- 4 continuously adjustable guides for Ø6.5 to 12.5 mm
- T-Handle for milling cutters



■ **ET-9085**

33PCS GLOW PLUG THREAD REPAIR SET

- Special kit for Glow Plug threads.
- Tap size : M8 X 1.0 / M10 X 1.0 / M10 X 1.25 / M12 X 1.0 / M12 X 1.25 / M14 X 1.25
- Thread Coil size : M8 X 1.0 (I) / M10 X 1.0 (E) / M10 X 1.0(I) / M12 X 1.0 (E) / M10 X 1.25(I) / M12 X 1.25(E) / M12 X 1.25(I) / M14 X 1.25 (E)



■ **ET-9169**

GLOW PLUG REMOVER SET

- Special design for removal, drilling out of glow plug thread and pulling of glow plug body from cylinder head.
- Suitable for MB CDI engine
- M8 x 1.0 / M10 x 1.0



■ **ET-9071**

VAG TDI INJECTOR PULLER SET

- Designed for quick and professional extraction of injection nozzles from diesel engines.
- Suitable for VW / AUDI diesel engines.
- 1.4sdi /tdi ; 1.9d / sdi/tdi(pd); 2.0tdi(pd)(pd 4-valves); 2.5tdi; 2.5tdi(pd); 2.8tdi(pd) 2.7/3.0tdi(common rail); 4.2tdi (common rail)



■ **ET-9060**

SLIDING HAMMER SET - PSA ENGINE

- Or fast and accurate extraction of stuck valve stem seals
 - Range from 10-19mm
 - Sliding hammer size : M16 x 20
- REAMER SET FOR ABS SENSOR HOLE**
- For cleaning the ABS sensor mounting holes
 - Removes debris, corrosion, dirt and residue of defect ABS sensors.
 - Follow sizes available :
 - VAG, commercial vehicles \varnothing 18 mm x 34 mm
 - VAG, BMW E36, E46, \varnothing 18 mm x 23 mm
 - Ford, Mercedes A-Class, and Mazda \varnothing 15 mm x 23 mm
 - BMW E38, E39, E52, E60, E61, E63, E64, E65, E66, E67, E70, E71 \varnothing 14 mm x 32 mm



■ **ET-9165**

ALTERNATOR REPAIR TOOL SET - 30 PIECE

- The kit is designed to removal and install alternator decoupler pulleys.
- These pulleys apply on all kinds vehicles.



■ **ET-9092**

DUPLEX CLUTCH REPAIR KIT-VAG DSG TRANSMISSION

- Repair the clutch unit of VAG DSG transmission
- Suitable for : VW Golf 2004>, Golf Plus 2005 > w/ 7- speed gearbox (Code OAM), Audi A3 2004 > w/ 7- speed gearbox



■ **ET-9107**

GLOW PLUG PULLER - 7PIECE

- The tool is designed for extracting failed glow plugs
- External grip (7.7mm internal \varnothing) Includes size 4 (6.0mm) contraction collet
- External grip (6.8mm internal \varnothing) Includes size 3 (5.0mm) contraction collet
- Contraction collet: size 3 (5.0mm)
- Contraction collet: size 2 (3.6mm)
- Contraction collet: size 1 (2.7mm)
- Slide hammer / puller
- Internal puller-expansion type



NEW

■ **ET-9114**

LAMBDA OXYGEN SENSOR THREAD REPAIR KIT

- For repair defect oxygen sensor thread
- Reamer \varnothing 18.6 mm
For reaming of oxygen sensor threads
- Tap M20 x 1.5
For cutting the repair bushing threads
- Tap M18 x 1.5
For cutting of oxygen sensor threads
- Insertion tool to insert the threaded bushings
- 5 repair bushings



■ **ET-9087**

GLOW PLUG BORE REAMER SET

- 145mm drive shaft
- Suitable glow plug threads M8-M10-M12
- Can use for 14mm hexagon socket



■ **ET-9116**

1/4" TURN OFF SOCKET SET FOR GLOW PLUG ELECTRODE

- For turning off the electrodes
- Includes turn off sockets : 2.6 - 3.2- 3.5 - 4.5 - 6.5 - 8.25mm



■ **ET-9149**

GLOW PLUG REAMER SET

- Cleaning the manhole of glow plug
- M 12 x 59mm
- M12 x 94mm
- M10 x 107mm
- M10 X 137mm



■ **ET-9188**

GLOW PLUG REMOVAL TOOL KIT -M9

- The tool is designed for removing of defective M9 X 1.0 glow plug
- Best for FIAT engine
- Consisting of
- Tap M9 X 1.0
- Tap 1/4" x 20UNC

28 Screwdriver Bit



NEW



■ SB-9072

MASTER WHEEL LOCKING LUG KEY SET- 16PCS

- Easily removes most wheel lug nuts and wheel locks on most popular vehicles and light trucks.
- Use with hand driver or impact wrench.



■ SB-9010

38PCS 1/2" & 1/4" BIT SOCKET SET

- 1/4" DRIVE:
 - 9 - 38 MM (L) TAMPERPROOF 5-STAR BIT SOCKETS: TS10H-TS15H-TS20H-TS25H-TS27H-TS30H-TS40H-TS45H-TS50H
- 1/2" DRIVE:
 - 6-55 MM (L) BIT SOCKETS: 5-HEX: 14-17-19-22-24 MM
 - 1-SPLINE: M16
 - 4-100 MM (L) BIT SOCKETS: 2-SPLINE: M9-M16
 - 1-RIBE: RM9
 - 1-TAMPERPROOF TX: T80H
 - 13-140 MM (L) BIT SOCKETS: 6-TX: T40-T45-T50-T55-T60-T70
 - 3-SPLINE: M10-M12-M14
 - 1-RIBE: RM10
 - 3-HEX: 10-11-13 MM
 - 1-160 MM (L) BALL POINT HEX BIT SOCKET: 5 MM
 - 3-S2BIT SOCKETS: 2-RIBE: RM7-RM8 X 240 MM(L)
 - 1-HEX: 7 MM X 230 MM (L)
 - 1-300 MM (L) TAMPERPROOF TX BIT SOCKET: T30H
 - 1-78 MM (L) AIR IMPACT SPLINE BIT SOCKET: M18



■ SB-9036

36 PCS 1/2" DR BIT SOCKET SET

- 10-TX-STAR BIT SOCKET : T20-25-27-30-40-45-50-55-60-70
- 9-RIBE BIT SOCKET : RM5-6-7-8-9-10-12-13-14
- 9-HEX BIT SOCKET : H5-6-7-8-10-12-14-17-19
- 8-SPLINE BIT SOCKET : M5-6-8-9-10-12-14-16



■ SB-9039

22PCS 1/2" DR BIT SOCKET SET

- 6 - 200MM (L) TORX : T40 - 45 - 50 - 55 - 60 - 70
- 6 - 200MM (L) RIBE : 8 - 9 - 10 - 12 - 13 - 14
- 6 - 200MM (L) HEX : 5 - 6 - 7 - 8 - 10 - 12
- 4 - 200MM (L) SPLINE : 8 - 10 - 12 - 14



■ **SB-9037** ○○○○

49 PCS 1/2"DR BIT SOCKET SET

- 9-55MM (L) HEX : 5-6 -7-8 -10-12-14-17-19 MM
- 5-100MM (L) HEX : 6-7-8-10-12 MM
- 5-55MM (L) SPLINE : M5-M6-M8-M10-M16
- 5-100MM (L) SPLINE : M6-M8-M10-M12-M14
- 9-55MM (L) TX : T20-T25-T27-T30-T40-T45-T50-T55-T60
- 6-100MM (L) TX : T25-T30-T40-T45-T50-T60
- 9-30MM (L) x 5/16" TAMPERPROOF TX BITS : T20-T25-T27-T30-T40-T45-T50-T55-T60
- 1-1/2"DR x 8MM BIT HOLDER



■ **SB-9085** ○○○○

27 PCS RATCHET TOOL SET WITH DISCO

- 1 - 36 Teeth Aluminum Handle With Disco
- 6 - Spline Sockets:AD-4-6-8-10-13 MM
- 20- BITS:PHILLIPS:#0, #1, #2, #3
SLOTTED: 2.0/3.0/4.0/5.0/6.0 mm
STAR: T6,T8,T10,T15,T20
HEX: H2.5/H3.0/H3.5
POZIDRIV: PZ1/PZ2/PZ3



■ **SB-9086** ○○○○

18 PCS RATCHET TOOL SET WITH DISCO

- 1-36 Teeth Aluminum Handle With Disco
- 1-50 mmL Stainless Bit holder
- 1-ADAPTOR
- 6-Spline Sockets: 4/5/6/8/10/13 mm
- 9-Bits: PHILLIPS: #0, #, #2, #3
SLOTTED: 2.0/3.0/4.0/5.0/6.0 mm



■ **SB-9087** ○○○○

28 PCS GEARLESS UFO TOOL SET

- 1 - Aluminum Handle With Gearless Ratchet
- 1 - ADAPTOR
- 7 - Spline Sockets: 4/5/6/7/8/10/13 mm
- 19 - Bits: PHILLIPS: #0, #1, #2, #3
SLOTTED: 2.0/3.0/4.0/5.0/6.0 mm
STAR:T6,T8,T10,T15,T20
HEX: H2.5/H3.0/H3.5
POZIDRIV: PZ1/PZ2



■ SB-9106

62PCS BIT SET

- 1 - 1/4" Bit Holder Quick Release
- 1 - 1/4" Adapter
- 60 - 1/4" 25MM Bits:

3PCS Phillip Bits: 1	3PCS Hex Bits:5
6PCS Phillip Bits: 2	3PCS Hex Bits:6
3PCS Phillip Bits: 3	3PCS Torx Bits:T10
3PCS Pozidriv Bits:1	3PCS Torx Bits:T15
6PCS Pozidriv Bits:2	3PCS Torx Bits:T20
3PCS Pozidriv Bits:3	3PCS Torx Bits:T25
3PCS Slotted Bits:4	3PCS Torx Bits:T27
3PCS Slotted Bits:6.5	3PCS Torx Bits:T30
3PCS Hex Bits:4	3PCS Torx Bits:T40

NEW



■ SB-9105

24PCS BIT&SOCKET SET

- 12 - 1/4" DR. Socket:4-4.5-5-5.5-6-7-8-9-10-11-12-13 MM
- 1 - 1/4" DR. Bit Holder
- 1 - 1/4" DR. 2Way Mini Ratchet
- 1 - 1/4" DR. 75L Extension Bar
- 9 - 1/4" 25MM Bits: 2PCS Phillip Bits:1-2
2PCS Pozidriv Bits:1-2
5PCS Star Bits:T10-T15-T20-T25-T30



■ SB-9107

29PCS BIT&SOCKET SET

- 9 - 1/4" DR. Socket:5-6-7-8-9-10-11-12-13 MM
- 1 - 1/4" Adapter
- 1 - 60L Bit Holder
- 17 - 1/4" 25MM Bits: 3PCS Phillip Bits:1-2-3
2PCS Pozidriv Bits: 1-2
2PCS Slotted Bits:4-6.5
4PCS Hex Bits:3-4-5-6
6PCS Star Bits:T10-T15-T20-T25-T30-T40



■ SB-9108

16PCS 1/4" DR. SOCKET SET

- 12-1/4" Dr. Socket:4-4.5-5-5.5-6-7-8-9-10-11-12-13 MM
- 1-1/4" Dr. Mini Ratchet
- 1-1/4" 100L Extension Bar
- 1-1/4"M x 3/8"F Adapter
- 1-1/4" Universal Joint



■ **SB-9096** (1)(2)(3)(4)(5)(6)

26PCS BIT&SOCKET SET

- 1-1/4" T2T MINI RATCHET HANDLE
- 18-25MM (L) BIT: PHILLIPS:1-2-3.
TORX(TAMPER):T10-T15-T20-T25-T27-T30-T40.
SLOT:4.5-6mm
POZI:1-2
HEX:3-4-5-6mm
- 1-25MML SOCKET ADAPTOR
- 1-60MML MAGNETIC BIT HOLDER - QUICK RELEASE
- 4-1/4"DR.SOCKET: 5-6-8-10mm



■ **SB-9102** (1)(2)(3)(4)(5)(6)

21PCS BIT SET

- 1-Bit Holder Quick Release
- 20-1/4" 25MM Bits: 3PCS Slotted Bits:4-5-5-6,5
3PCS Phillip Bits:1-2-3
3PCS Pozidriv Bits:1-2-3
4PCS Hex Bits:3-4-5-6
7PCS Star Bits:T10-T15-T20-T25-T27-T30-T40



■ **SB-9103** (1)(2)(3)(4)(5)(6)

24PCS BIT SET

- 1-1/4" Mini Ratchet
- 1-1/4" 60L Bit Holder
- 1-1/4" Adapter
- 21-1/4" 25MM Bits: 3PCS Phillip Bits:1-2-3
3PCS Pozidriv Bits: 1-2-3
4PCS Slotted Bits: 4-5.5-6.5-7
4PCS Hex Bits: 3-4-5-6
7PCS Star Bits: T10-T15-T20-T25-T27-T30-T40



■ **SB-9104** (1)(2)(3)(4)(5)(6)

32PCS BIT SET

- 1 - 1/4" Bit Holder Quick Release
- 1 - 1/4" Adapter
- 30 - 1/4" 25MM Bits: 4PCS Slotted Bits:4-5.5-6.5-7
4PCS Phillip Bits:0-1-2-3
4PCS Pozidriv Bits:0-1-2-3
4PCS Hex Bits:3-4-5-6
7PCS Star Bits:T10-T15-T20-T25-T27-T30-T40
7PCS Temper Hex Bits:TH10-TH15-TH20-TH25-TH27-TH30-TH40



■ SB-9094

22IN1 ELECTRONIC PRECISION SET

- 1-HANDLE WITH SCREW MECHANIC FOR FIXING
- 1-EXTENSION 70MM WITH HEX SHANK
- 5-TORX BITS:T4-T5-T6-T7-T8
- 5-SLOTTED BITS: 1.0-1.5-2.0-2.5-3.0 MM
- 4-PH BITS: 000-00-0,1
- 6-NUTDRIVER BITS:2.5-3.0-3.5-4.0-4.5-5.0MM



■ SB-9095

23IN1 ELECTRONIC PRECISION SET

- 1-HANDLE WITH SCREW MECHANIC FOR FIXING
- 1-EXTENSION 70MM WITH HEX SHANK-4MM
- 1-EXTENSION 70MM WITH HEX SHANK-1/4"
- 10-25mm BITS:SU6,8,10mm TH15,TH20,TH25 HEX2,3,4,5mm
- 10-28mm T4,T5,T6,T7 (-)1.5,2.0,2.5 (+)PH00,PH0,PH1(8660)



■ SB-9111

34 PCS BIT & SOCKET SET

- 1-STUBBY RATCHET HANDLE
- 24-25MM (L) BIT: PHILLIPS:1-2-3.
SLOT: 3-4-5-6mm
TORX: T10-T15-T20-T25-T27-T30-T40.
TORX(TAMPER):T10H-T15H-T20H-T25H-T27H-T30H
HEX: 3-4-5-6mm
- 1-25MML SOCKET ADAPTOR
- 1-60MML MAGNETIC BIT HOLDER-QUICK RELEASE
- 7-1/4"DR.SOCKET: 6-7-8-9-10-11-12mm



■ SB-9098

17PCS MOBILE PHONE REPAIR SET

- 1-Two Color Handle
- 1-Plastic Pry Tool (Phillips Handle)
- 1-Plastic Pry Tool (Round Handle)
- 1-Triangle Paddle
- 1-Sucker Pick
- Phillips: #000/#00/#0
- Slotted: 1.0 / 2.0
- Torx: T2/T3/T5/T6
- Pentalobe: P2/P5
- Tri-Wing: Y2.6



■ **SB-9097** ⊕ ⊖ ⊕ ⊖

12 IN 1 EXTENDABLE PRECISION SCREWDRIVER SET

- 1-Slotted 1.5/Phillips NO.000
- 1-Slotted 2.0/Phillips NO.00
- 1-Star T4/Star T8
- 1-Star T5/Star T9
- 1-Star T6/Star T10
- 1- P2/P5



■ **SB-9060** ⊕ ⊖

12IN1 GEARLESS PRECISION SCREWDRIVER

- T5 x T20 x 4MM x 100MM
- T6 x T15 x 4MM x 100MM
- T8 x T10 x 4MM x 100MM
- (-)2.0 x (+)PH00 x 4MM x 100MM
- (-)3.0 x (+)PH0 x 4MM x 100MM
- (-)4.0 x (+)PH1 x 4MM x 100MM



PAT.
NEW

■ **SB-9099**

2 IN 1 POWER TOOL HOLDER



NEW

■ **SB-9100** ⊕ ⊖ ⊕ ⊖

2 IN 1 WITH FLEX HANDLE

- 1-2 in 1 with flex handle
- 13- Bits: 3PCS Torx Bits:T20-T25-T30
4PCS Slotted Bits:3-4-5-6 MM
3PCS Pozidriv Bits: 1-2-3 MM
3PCS Hex Bits:4-5-6 MM
- 9-Sockets:5-6-7-8-9-10-11-12-13 MM



NEW

■ **SB-9101** ⊕ ⊖ ⊕ ⊖

1/2" DR. T-HANDLE PLUS E-Z HOLDING
EXTENSION BAR

- 1 - 1/2" DR. 10" T-handle
- 1 - 1/2" DR. E-Z Holding 10" Impact Extension Bar



NEW

■ **SB-9091** ⊕ ⊖ ⊕ ⊖

T-HANDLE(PP+TPR) RATCHET SCREWDRIVER

- 1-T-HANDLE(PP+TPR)
- 1-EXTENSION 175MM WITH HEX SHANK-1/4"
- 6-25mm Bits: (+)PH1,PH2,
(-)3/16",1/4"
T15,T20



■ **SB-9093** ⊕ ⊖ ⊕ ⊖

9IN1 PRECISION SCREWDRIVER SET

- 8-25mm (+)PH1,PH2,(*)PZ1,PZ2,(-)4.0,6.0,H4,H6

35

Socket & Tool Set



■ ST-9040

50PCS 1/4" DRIVE SUPER LOCK SOCKET WRENCH SET

- 13 - SOCKETS: 4-4.5-5-5.5-6-7-8-9-10-11-12-13-14 MM
- 7-E SOCKETS: E4-E5-E6-E7-E8-E10-E11
- 1-145 MM (L) 72 TEETH LEVER TYPE QUICK RELEASE RATCHET HANDLE WITH 2-TONE GRIP
- 1-150 MM (6") DOUBLE-END SPINNER HANDLE WITH 2-TONE GRIP
- 1-115 MM (4-1/2") SLIDING T-BAR
- 2-EXTENSION BARS: 50 MM & 100 MM (2" & 4")
- 1-UNIVERSAL JOINT
- 3-HEX KEY WRENCHES: 1.5-2-2.5 MM
- 21-BIT SOCKETS: 3 - SLOTTED: 4-5.5-7 MM
 - 3-PHILLIPS: NO.1, 2 & 3
 - 3-POZIDRIV: NO.1, 2 & 3
 - 6-HEX: 3-4-5-6-7-8 MM
 - 6-TX: T10-T15-T20-T25-T30-T40



■ ST-9049

52PCS 3/8"DR SOCKET WRENCH SET

- 18-SOCKETS: 6-7-8-9-10-11-12-13-14-15-16-17-18-19-20-21-22-24 MM
- 1-72 TEETH CURVED SHANK QUICK RELEASE RATCHET HANDLE W/ 2-TONE SOFT GRIP
- 2-SPARK PLUG SOCKETS W/EX-HEX : 16 & 21 MM
- 3-WOBBLE EXTENSION BAR W/EX-HEX: 47-75-150 MM
- 1-UNIVERSAL JOINT
- 1-3/8"DR.(M) x 1/2"DR. (F) ADAPTOR FOR SLIDING T-BAR
- 25-BIT SOCKETS: 3-SLOTTED: 5.5-7-8 MM
 - 3-PHILLIPS: NO.1-2-3
 - 3-POZIDRIV: NO.1-2-3
 - 7-HEX : 3-4-5-6-7-8-10 MM
 - 9-TX: T15-T20-T25-T27-T30-T40-T45-T50-T55
- 1-3/8" x 70mm(L) BIT ADAPTOR



■ ST-9031

L-TYPE OPEN ENDED RING WRENCH SOCKET SET

- Designed to loosen and tighten nuts and bolts in limited space
- 1/2" Dr. x 6pcs
- Sizes : 12 / 14 / 16 / 17 /18 / 19mm



■ **ST-9092**

24PCS 1/2" DR. SOCKET SET

- 19 - SOCKET : 10-11-12-13-14-15-16-17-18-19-21-22-23-24-26-27-28-30-32 MM
- 2-EXTENSION BAR: 125MM & 250MM
- 1-SLIDING T-HEAD
- 1-UNIVERSAL JOINT
- 1-72T RATCHET HANDLE



NEW

■ **ST-9093**

38PCS 75° BOX END GO-THROUGH BEAM FLEXIBLE GEAR WRENCH SET

- 1/2"DR:1-538R 19MM BEAM FLEXIBLE GEAR-RING WRENCH
12-SOCKET:10-11-12-13-14-15-16-17-18-19-21-22MM
4-DEEP SOCKET:10-13-17-19MM
2-SPARK PLUG SOCKET:16-21MM
1-SPECIAL EXTENSION BAR 1/2"*75L(3")
1-UNIVERSAL JOINT
1-ADAPTOR 1/2" x 20MM
- 1/4"DR: 1-538R 10MM BEAM FLEXIBLE GEAR-RING WRENCH
11-SOCKET: 4-5-6-7-8-9-10-11-12-13-14MM
1-SPECIAL EXTENSION BAR
1-UNIVERSAL JOINT
1-NEW PUSH ADAPTOR 1/4" x 20MM
1-HEX KEY 1.5-2-2.5MM



NEW

■ **ST-9094**

- 1pcs- 538RS 75° Flex Wrench 13mm
- 12pcs- Socket 8-9- 10-11-12-13-14-15-16-17-18-19 mm
- 2pcs- Spark Plug Socket 16-21mm
- 1pcs- Extension Bar 3" (75mm)
- 1pcs- Universal Joint
- 1pcs- 3/8"F x 1/4"M Adaptor
- 1pcs- Ratchet w/Qicket Release
- 1pcs- 1/4" x Bit Couple
- 1pcs- Spinner Handle 150mm
- 20pcs- 25L Bit
3-PH: 1-2-3
3-SL:4-5.5-6.5
4-HEX:3-4-5-6
10-TX:T7-T8-T9-T10-T15-T20-T25-T27-T30



■ **ST-9095**

46PCS 1/2" & 1/4" BIT&SOCKET SET

- 1/2" Dr: 11-Socket:10-11-12-13-14-15-16-17-19-22-24 MM
1-Ratchet Handle
2-125L&250L Extension Bar
- 1/4" Dr: 9-Sockets:4-5-6-7-8-9-10-11-12 MM
1-Ratchet Handle
1-50L Extension Bar
1-Handle
20-25L Bits



■ **ST-9096-1** ♻️🌱🌱

26PCS 1/2" DR. IMPACT BIT SOCKET SET

- 78MM(L)
- 9-TX: T20-T25-T30-T40-T45-T50-T55-T60-T70
- 8-HEX: 5-6-8-10-12-14-17-19 MM
- 9-SPLINE: M4-M5-M6-M8-M9-M10-M12-M14-M16



■ **ST-9096-2** ♻️🌱🌱

26PCS 1/2" DR. IMPACT BIT SOCKET SET

- 78MM(L)
- 8-TX: T30-T40-T45-T50-T55-T60-T70-T80
- 9-HEX: 4-5-6-8-10-12-14-17-19 MM
- 9-SPLINE: M6-M8-M9-M10-M12-M14-M16-M17-M18



■ **ST-9097** ♻️

9PCS 1/2" DR. IMPACT BIT SOCKET SET

- 78MM(L)
- 9-TX: T20-T25-T30-T40-T45-T50-T55-T60-T70



■ **ST-9097-2** ♻️

9PCS 1/2" DR. IMPACT BIT SOCKET SET

- 78MM(L)
- 9-TX: T20-T25-T27-T30-T35-T40-T45-T50-T55



■ **ST-9097-1** ♻️

9PCS 1/2" DR. IMPACT BIT SOCKET SET

- 78MM(L)
- 9-TX: T25-T30-T40-T45-T50-T55-T60-T70-T80



■ **ST-9098** 🌱

9PCS 1/2" DR. IMPACT BIT SOCKET SET

- 78MM(L)
- 9-SPLINE: M4-M5-M6-M8-M9-M10-M12-M14-M16



- **ST-9098-1** ○
- 9PCS 1/2" DR. IMPACT BIT SOCKET SET
- 78MM(L)
- 9-SPLINE: M5-M6-M8-M9-M10-M12-M14-M16-M18



- **ST-9098-2** ○
- 9PCS 1/2" DR. IMPACT BIT SOCKET SET
- 78MM(L)
- 9-SPLINE: M6-M8-M9-M10-M12-M14-M16-M17-M18



- **ST-9099** ○
- 9PCS 1/2" DR. IMPACT BIT SOCKET SET
- 78MM(L)
- 9-HEX: 4-5-6-8-10-12-14-17-19 MM



- **ST-9099-1** ○
- 9PCS 1/2" DR. IMPACT BIT SOCKET SET
- 78MM(L)
- 9-HEX: 4-5-6-7-8-9-10-12-14 MM



- **ST-9099-2** ●
- 9PCS 1/2" DR. IMPACT BIT SOCKET SET
- 78MM(L)
- 9: RM5-RM6-RM7-RM8-RM9-RM10-RM12-RM13-RM14



- **ST-9099-3** ●
- 9PCS 1/2" DR. IMPACT BIT SOCKET SET
- 78MM(L)
- 9: RM5-RM6-RM7-RM8-RM9-RM10-RM11-RM12-RM13



- **ST-9101-1** ○
- 8PCS 1/2" DR. IMPACT BIT SOCKET SET
- 78MM(L)
- 8-SPLINE: M4-M5-M6-M8-M9-M10-M12-M14



- **ST-9102** ○
- 8PCS 1/2" DR. IMPACT BIT SOCKET SET
- 78MM(L)
- 8-HEX: 5-6-8-10-12-14-17-19 MM



- **ST-9102-1** ○
- 8PCS 1/2" DR. IMPACT BIT SOCKET SET
- 78MM(L)
- 8-HEX: 6-7-8-10-12-14-17-19 MM



- **ST-9102-2** ○
- 8PCS 1/2" DR. IMPACT BIT SOCKET SET
- 78MM(L)
- 8-HEX: 4-5-6-7-8-9-10-12 MM



- **ST-9103** ●
- 8PCS 1/2" DR. IMPACT BIT SOCKET SET
- 78MM(L)
- 8-RM5-RM6-RM7-RM8-RM9-RM10-RM12-RM14



- **ST-9103-1** ●
- 8PCS 1/2" DR. IMPACT BIT SOCKET SET
- 78MM(L)
- 8-RM5-RM6-RM7-RM8-RM10-RM11-RM12-RM13



- **ST-9100** ♻️
- 8PCS 1/2" DR. IMPACT BIT SOCKET SET
- 78MM(L)
- 8-TX: T30-T40-T45-T50-T55-T60-T70-T80



- **ST-9100-1** ♻️
- 8PCS 1/2" DR. IMPACT BIT SOCKET SET
- 78MM(L)
- 8-TX: T20-T25-T27-T30-T35-T40-T45-T50



- **ST-9101** ○
- 8PCS 1/2" DR. IMPACT BIT SOCKET SET
- 78MM(L)
- 8-SPLINE: M5-M6-M8-M10-M12-M14-M16-M18



- **ST-9103-2** ●
- 8PCS 1/2" DR. IMPACT BIT SOCKET SET
- 78MM(L)
- 8-RM5-RM6-RM7-RM8-RM9-RM10-RM11-RM12



- **ST-9104** ○○
- 8PCS 1/2" DR. IMPACT BIT SOCKET SET
- 78MM(L)
- 4-TX:T30-T40-T45-T50
- 4-HEX:5-6-8-10 MM



- **ST-9105** ○
- 8PCS 1/2" DR. IMPACT BIT SOCKET SET
- 4-43MM(L) SPLINE: M12-M14-M16-M18
- 4-78MM(L) SPLINE: M12-M14-M16-M18



- **ST-9106** ○
- 6PCS 1/2" DR. IMPACT BIT SOCKET SET
- 3-43MM(L) SPLINE: M14-M16-M18
- 3 -75MM(L) SPLINE: M14-M16-M18



- **ST-9090** ○
- 5PCS IMPACT SOCKET BIT SET
- 3-1/2" DR. 12PT Sockets: 24-30-32 MM
- 2-Hex Bits: 14-17 MM



- **ST-9105-1** ○
- 8PCS 1/2" DR. IMPACT BIT SOCKET SET
- 3 - 43MM(L) SPLINE: M14-M16-M18
- 5 - 78MM(L) SPLINE: M12-M14-M16-M17-M18



- **ST-9105-2** ○
- 8PCS 1/2" DR. IMPACT BIT SOCKET SET
- 3 - 43MM(L) HEX: 14-17-19 MM
- 5 - 78MM(L) HEX: 12-14-17-19-22 MM



- **ST-9091**
- 14PCS TWIST OFF SOCKET SET
- 13 - DR. 6PT Sockets:10-11-12-13-14-16-17-18-19-21-22-24-27 MM
- 1 - POUNCH



- **ST-9096** ○○○
- 26PCS 1/2" DR. IMPACT BIT SOCKET SET
- 78MM(L)
- 9-TX: T25-T30-T40-T45-T50-T55-T60-T70-T80
- 8-HEX : 5-6-8-10-12-14-17-19 MM
- 9-SPLINE: M5-M6-M8-M9-M10-M12-M14-M16-M18

42

Oil Extractor



NEW

■ OI-9044

12PCS PLASTIC CLAMP AND STOPPER KIT

- Newly universal design to seal steel lines once disconnected.
- Prevents fluid leaks and contamination during service.

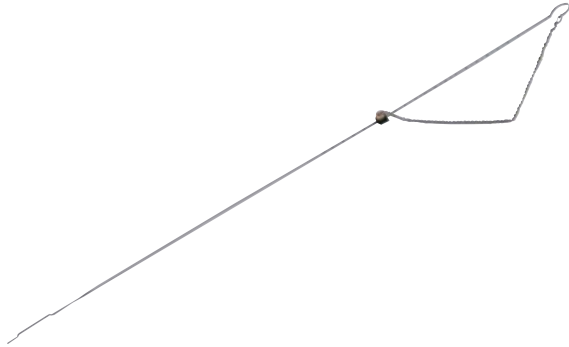


■ OI-9019

OIL EXTRACTOR - 12L

- Fluid Refilling Set, special for refilling fluid such as ATF, gear oil and differential oil.
- 12.5L Tank
- Recommended pneumatic power pressure: 5-7 kg/cm²
- Temperature range: -46c° to 80c°
- 1500mm-long ROHS PVC filling hose with a quick coupling that can be connected with ATF refill adapters
- Manual operation: the exiting volume of fluid is 0.1 liter per manual pump
- Pneumatic operation: the exit volume of the fluid is 0.18-0.2 liter per second

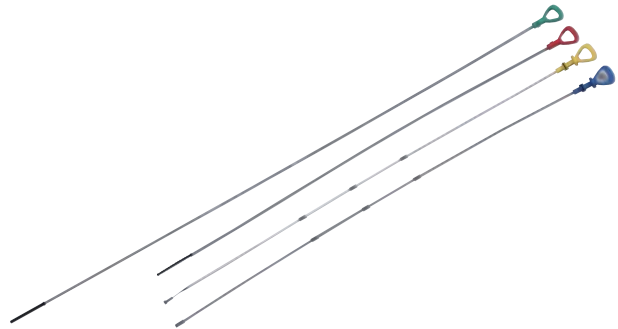
Adapter	Description	Thread	Application
NO.1	Ford ATF Refill Adapter	1/8" NPT	Ford
NO.2	Volvo ATF Refill Adapter	5/16-24UNF	Volvo
NO.3	VW ATF Refill Adapter	M10 x 1.0	Volkswagen
NO.4	VW ATF Refill Adapter, Short	N/A	Volkswagen
NO.5	VW AFT Refill Adapter, Long	N/A	Volkswagen
NO.6	Angled ATF Refill Adapter	N/A	BMW,Honda,Nissan
NO.7	Toyota ATF Refill Adapter	M18 x 1.5	Toyota
NO.8	VW/Audi ATF Refill Adapter	M24 x 1.5	VW, Audi w/CVT Transmission
NO.9	Audi ATF Refill Adapter	M22 x 1.5	Audi w/CVT Transmission
NO.10	Mercedes ATF Refill Adapter	M12 x 1.5	Mercedes w/722.9 Transmission



■ **OI-9018**

AUDI ENGINE OIL DIPSTICK

- The tool designed to measure the oil level
- Applicable : AUDI A4 / A5 / A6 2.0L TFSI, 3.2L FSI , 4.2FSI, 2.0 / 2.7 / 3.0 TDI, 1.8 / 2.0 / 3.0 TFST,



■ **OI-9013**

OIL DIPSTICK SET FOR ENGINE & GEARBOXES - MERCEDES- BENZ

- For engine oil, M112,113,646,647,648- Length 930mm
- For engine oil, 103.943 / 984 / 985, 104,111,119,120,137,603, 913/963/97,604,605,606,611,612,613,628,612.965 - Length 930mm
- For gear oil, 722.7_P, 722.8_P, 716.5_V - Length 920mm
- For gear oil, 722.6_L, G,P,V- Length 1220mm



■ **OI-9042**

UNIVERSAL OIL FUNNEL -2.3L

- With bayonet fitting
- Capacity : 2.3L
- Universal type : AUDI, VW, SEAT, SKODA, MB



■ **OI-9031**

HOSE LOCKING PLIERS SET -8PIECE

- For locking hoses during the repair job
- Prevent the leakage of operation
- For brake hoses, air conditioning hoses, power steering hoses.

44 Tester Series



NEW

■ **TS-9054**

COMPRESSION TESTER

- Easy to read 2 1/2" diameter gauge with quick coupling
Gauge range:0~300psi, 0~20kg/cm².
- High pressure braided stainless steel casing x1.
- Rubber-sealed pressure piece for manual use, straight x1.
- M10 x1.0 adapter x1.
- M12 x1.25 adapter x1.
- M14 x1.25 adapter x1.



NEW

■ **TS-9056**

DIESEL CYLINDER PRESSURE DETECTION GAUGE

- Pressure Range: 0~ 1000 PSI / 0~70 KG/cm²
Maximum Working Pressure (Normal Operation Range 750 PSI)
- Application:ALFA ROMEO, AUDI, BENZ, BMW, CHEVETTE, CHRYSLER, CONTINENTAL, DEUTZ, DEUTZ, FORD, GENERAL MOTORS, HUMMER, INTEMATIONAL, ISUZU/ISUZU TRUCK, KUBOTA, LAND ROVER, LINCOLN, LUV, MARK VLL, MAZDA, MERCEDES BENZ, MITSUBISHI, NAVISTAR, NISSAN/UD TRUCK, OPEL, PEUGEOT, RENAULT, ROVER, TOYOTA, VAUXHALL, VOLVO, VW.



NEW

■ **TS-9055**

COMMON RAIL RETURN FUEL TESTER (QUICK REPLACE COUPLING)

- Suitable for injector return side of a CRD system.
- This kit can help to diagnose poor acceleration, general lack of engine power, rough engine running, and no engine starting.
- Graduated acrylic measuring block with hook for up to 8 cylinders x1.
- Hoses with Quick Replace Coupling and Short pipes sets
- Spring Steel x1 and Flexible Line Clamp x1.
- Injector adapters sets for Bosch/Simens/Denso/Delphi.



NEW

■ **TS-9057**

RADIATOR PRESSURE TESTER KIT

- The essential test tool helps find internal and external leaks in cooling system.
- The universal type suitable for domestic and import vehicles.

45 General Tools



■ GT-9153

MULTI-FUNCTIONAL TELESCOPIC POLE

- Extending the pole, using the end to press the broke pedal, the other end to buckle on the steering wheel.
- Check the brake lights are normal or not (No need to start the car)
- Hammer end knock tire to datermine the tire pressure.
- Hook end to remove small stone or nail in the tire grooves.
- Prop the hood higher conveniently to check the engine oil, battery, belt, radiator.
- Strong and light 3 sections aluminum telescopic pole avilable from 53 cm to 120cm.



NEW PAT.

■ GT-9154

6PCS MULTI-FUNCTION KNIVES



NEW PAT.

■ GT-9155

3PCS HORTICULTURAL GRAFTING KNIVES



NEW PAT.

■ GT-9156

6PCS HUNTING KNIVES



- Cut All kinds of nylon /Hemp rope/Cutton thread



- Cut All kinds of wires /Copper/Hydro/Metal wire



- Cut All kinds of pipes /Exhaust pipe/Gas pipe



- Cut Plastic line/Cotton/Nylon /Fiber cable/GUT



- Cut Wood-based panels /Carpet/Cushion



■ **GT-9126**
FRONT WIPER REPAIR KIT - VAG / SEAT / SKODA

- For repair rust wiper arm shafts
- replacement of wiper arm



■ **GT-9127**
VAG REAR WINDOW WASHER REPAIR SET

- Drilling out nozzle residues from the wiper arm shaft
- Take off brass pipe out of wiper motors
- Includes : 10 plastic pipe as brass pipe replacement
- Application : VW Golf IV, Passat, Sharan, Audi A4, Ford Galaxy, Seat Alhambra



■ **GT-9164**
THREAD REPAIR KIT - 32PCS

- Designed to re-thread the thread on engine.
- Application size: M5x0.8x10L, M6x1.0x14L, M8x1.25x15L, M10x1.5x18L



■ **GT-9109**
CENTER SLEEVE PIN SET

- Design to protect the wheel threads when taking off the wheel.
- Center sleeves kit with inner thread for exact mounting of truck wheels.
- M18x1.5 DAF, Unimog, Iveco, MAN, Renault, Volvo
- M20x1.5 Mercedes
- M22x1.5 DAF, MAN, Mercedes, Ford, Renault, Scania, Volvo



NEW

■ **GT-9151**
HOT STAPLER FOR PLASTIC REPAIR SYSTEM

- Designed for quick repairing or reinforcing broken, damaged, split plastic parts.
- 3 basic design pin included.
- light weight compact design and easy to access to tight and hard to reach place



■ **GT-9112**
TENSIONER PULLEY WRENCH - 12PIECE

- 12pt. heads : 12, 13, 14, 15, 16, 17, 18, 19mm
- E-type heads: E10, E12, E14, E16, E18



■ **GT-9146**

FIXING CLAMP SET

- For fast and easy fixing during welding and gluing
- Includes 10 universal steel clamps
- Clamp opening : 0-5mm



■ **GT-9165**

HSS SCREW EXTRACTOR SET - 25PIECE

- The kit is design to turning out broken screws and studs
- 5 HSS drills: 3.2 - 4.8 - 6.4 - 8.0 - 8.7 mm
- 10 guide bushings for drills
- 5 extractor pins
- 5 extractor adapters
- HSS Steel



■ **GT-9117**

ENGINE & TRANSMISSION SUPPORT RACK.

- Three position flexible extension length.
- Universal type applying
- Firm structure design for better repair on engine and transmission require.
- Full position adjustable hook design for secure supporting
- Non-slip plate with adjustable height for quick position support.



NEW

■ **GT-9166**

V-BELT MEASURING GAUGE

- The tool is designed to measure the length of V-Belt and V-Ribbed belts.
- Optimum setting accuracy
- Easy to read markings



■ WR-9039

12PCS RATCHET WRENCH SET

-8,9,10,11,12,13,14,15,16,17,18,19MM

- Of chrome-vanadium steel
- Unique 72 tooth



■ WR-9039-6-M

■ WR-9039-50-S

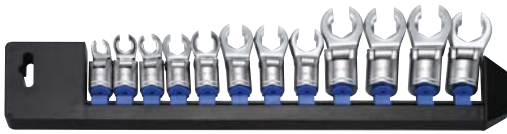
RATCHET WRENCH

Item No.	Size	Finish
WR-9039-6-M	6mm	Mirror
WR-9039-6-S	6mm	Stain
WR-9039-7-M	7mm	Mirror
WR-9039-7-S	7mm	Stain
WR-9039-8-M	8mm	Mirror
WR-9039-8-S	8mm	Stain
WR-9039-9-M	9mm	Mirror
WR-9039-9-S	9mm	Stain
WR-9039-10-M	10mm	Mirror
WR-9039-10-S	10mm	Stain
WR-9039-11-M	11mm	Mirror
WR-9039-11-S	11mm	Stain
WR-9039-12-M	12mm	Mirror
WR-9039-12-S	12mm	Stain
WR-9039-13-M	13mm	Mirror
WR-9039-13-S	13mm	Stain
WR-9039-14-M	14mm	Mirror
WR-9039-14-S	14mm	Stain

Item No.	Size	Finish
WR-9039-15-M	15mm	Mirror
WR-9039-15-S	15mm	Stain
WR-9039-16-M	16mm	Mirror
WR-9039-16-S	16mm	Stain
WR-9039-17-M	17mm	Mirror
WR-9039-17-S	17mm	Stain
WR-9039-18-M	18mm	Mirror
WR-9039-18-S	18mm	Stain
WR-9039-19-M	19mm	Mirror
WR-9039-19-S	19mm	Stain
WR-9039-20-M	20mm	Mirror
WR-9039-20-S	20mm	Stain
WR-9039-21-M	21mm	Mirror
WR-9039-21-S	21mm	Stain
WR-9039-22-M	22mm	Mirror
WR-9039-22-S	22mm	Stain
WR-9039-23-M	23mm	Mirror
WR-9039-23-S	23mm	Stain

Item No.	Size	Finish
WR-9039-24-M	24mm	Mirror
WR-9039-24-S	24mm	Stain
WR-9039-25-M	25mm	Mirror
WR-9039-25-S	25mm	Stain
WR-9039-26-M	26mm	Mirror
WR-9039-26-S	26mm	Stain
WR-9039-27-M	27mm	Mirror
WR-9039-27-S	27mm	Stain
WR-9039-30-M	30mm	Mirror
WR-9039-30-S	30mm	Stain
WR-9039-32-M	32mm	Mirror
WR-9039-32-S	32mm	Stain
WR-9039-33-M	33mm	Mirror
WR-9039-33-S	33mm	Stain
WR-9039-34-M	34mm	Mirror
WR-9039-34-S	34mm	Stain
WR-9039-35-M	35mm	Mirror

Item No.	Size	Finish
WR-9039-35-S	35mm	Stain
WR-9039-36-M	36mm	Mirror
WR-9039-36-S	36mm	Stain
WR-9039-38-M	38mm	Mirror
WR-9039-38-S	38mm	Stain
WR-9039-40-M	40mm	Mirror
WR-9039-40-S	40mm	Stain
WR-9039-41-M	41mm	Mirror
WR-9039-41-S	41mm	Stain
WR-9039-45-M	45mm	Mirror
WR-9039-45-S	45mm	Stain
WR-9039-46-M	46mm	Mirror
WR-9039-46-S	46mm	Stain
WR-9039-48-M	48mm	Mirror
WR-9039-48-S	48mm	Stain
WR-9039-50-M	50mm	Mirror
WR-9039-50-S	50mm	Stain



- **WR-9114**
12PCS 3/8" SQ DRIVE OFFSET FLEXIBLE CROWFOOT SOCKET WRENCH SET



NEW

- **WR-9116**
3/8" DR. INSULATED TORQUE WRENCH TORQUE : 20-100 NM
 - Guaranteed Accuracy: $\pm 4\%$
 - Tool length : 456 mm



NEW

- **WR-9102**
FLEXIBLE RATCHET CRASS FROM 75° BOX END WRENCH SET
 - 8-9-10-11-12-13-14-15-16-17-18-19MM



- **WR-9072**
17PCS BIT & SOCKET SET WITH PRO RATCHET WRENCH
 - 1-1/4" x 5/16" Reversible Double Stop Ring&Magnetic&Disk Ratchet Wrench
 - 10 - 1/4" Bits: 3PCS Slotted Bits: 3-4-5 MM
3PCS Pozidriv Bits: 1-2-3 MM
3PCS Tamper Star Bits: TT20-TT25-TT30
1PCS Hex Bits: 4 MM
 - 5-1/4" Spline Sockets: 8-10-12-13-14 MM
 - 1-1/4" Socket Adapter



NEW

- **WR-9113**
7PCS SAE INTERCHANGEABLE OPEN END WRENCH SET
 - 3/8", 7/16", 1/2", 9/16", 5/8", 11/16"



■ **WR-9111**
 REVERSIBLE DOUBLE BOX RATCHET WRENCH SET
 · 10 x 1 3,17 x 19MM



■ **WR-9100**
 FLEXIBLE FLARE NUT OFF BEAM 75° BOX END WRENCH SET
 · 8-10-12-13-14-17-19MM



■ **WR-9115**
 1/4" 2way Mini Wrench



■ **WR-9100-8-SM**
 ■ **WR-9100-19-SM**
 FLEXIBLE FLARE NUT OFF BEAM 75° BOX END WRENCH

Item No.	Size	Finish
WR-9100-8-SM	8mm	Silver Mat Finish
WR-9100-9-SM	9mm	Silver Mat Finish
WR-9100-10-SM	10mm	Silver Mat Finish
WR-9100-11-SM	11mm	Silver Mat Finish
WR-9100-12-SM	12mm	Silver Mat Finish
WR-9100-13-SM	13mm	Silver Mat Finish
WR-9100-14-SM	14mm	Silver Mat Finish
WR-9100-15-SM	15mm	Silver Mat Finish
WR-9100-16-SM	16mm	Silver Mat Finish
WR-9100-17-SM	17mm	Silver Mat Finish
WR-9100-18-SM	18mm	Silver Mat Finish
WR-9100-19-SM	19mm	Silver Mat Finish



■ **WR-9098**
 3 WAY HEX KEY WRENCH SET(MM)
 · 1 - 2.0 x 125MM
 · 1 - 2.5 x 125MM
 · 1 - 3.0 x 125MM
 · 1 - 4.0 x 180MM
 · 1 - 5.0 x 180MM
 · 1 - 6.0 x 210MM
 · 1 - 7.0 x 210MM
 · 1 - 8.0 x 250MM
 · 1 - 10 x 300MM

**NEW
 PAT.**



■ **WR-9099**
 3 WAY TORX KEY WRENCH SET
 · 1-T10 x 125
 · 1-T15 x 125
 · 1-T20 x 125
 · 1-T25 x 180
 · 1-T30 x 180
 · 1-T40 x 210
 · 1-T45 x 210
 · 1-T50 x 215

**NEW
 PAT.**



- **WR-9101**
FLEXIBLE RATCHET CRASS FROM 75° BOX END WRENCH SET
 · 8-10-12-13-14-17-19MM



- **WR-9101-8-SM**
- **WR-9101-19-SM**
FLEXIBLE RATCHET CRASS FROM 75° BOX END WRENCH

Item No.	Size	Finish
WR-9101-8-SM	8mm	Silver Mat Finish
WR-9101-9-SM	9mm	Silver Mat Finish
WR-9101-10-SM	10mm	Silver Mat Finish
WR-9101-11-SM	11mm	Silver Mat Finish
WR-9101-12-SM	12mm	Silver Mat Finish
WR-9101-13-SM	13mm	Silver Mat Finish
WR-9101-14-SM	14mm	Silver Mat Finish
WR-9101-15-SM	15mm	Silver Mat Finish
WR-9101-16-SM	16mm	Silver Mat Finish
WR-9101-17-SM	17mm	Silver Mat Finish
WR-9101-18-SM	18mm	Silver Mat Finish
WR-9101-19-SM	19mm	Silver Mat Finish



NEW

- **WR-9107**
EXTRA LONG DOUBLE BOX FLEXIBLE & REVERSIBLE SPLINE RATCHET WRENCH SET
 · 8*10,12*13,14*15,16*18,17*19MM
 · Of chrome-vanadium steel, hot drop-forged and heat-treated
 · Patented design enables quick working in tight spaces (5° swing)
 · Slim dimensions further ease working in confined areas
 · Meets ANSI, DIN and federal torque specifications, and U.S. patented



NEW

- **WR-9106**
REVERSIBLE DOUBLE BOX SPLINE RATCHET WRENCH SET
 · 8*10,12*13,14*15,16*18,17*19MM
 · Of chrome-vanadium steel, hot drop-forged and heat-treated
 · Patented design enables quick working in tight spaces (5° swing)
 · Slim dimensions further ease working in confined areas
 · 15° offset, reversible
 · Meets ANSI, DIN and federal torque specifications, and U.S. patented



■ **WR-9112-1**
EXTRA LONG FLEXIBLE&REVERSIBLE RATCHET
HANDLE WITH 3/8" SOCKET SET



■ **WR-9112**
EXTRA LONG FLEXIBLE&REVERSIBLE RATCHET
HANDLE WITH 1/4" SOCKET SET



■ **WR-9109**
HALF MOON BOX-END RATCHET WRENCH

- 10*12,14*17MM
- Of chrome-vanadium steel, hot drop-forged and heat-treated
- Patented design enables quick working in tight spaces (5° swing)
- Slim dimensions further ease working in confined areas
- 15° offset, reversible
- Meets ANSI, DIN and federal torque specifications, and U.S. patented



■ **WR-9108**
S-SHAPE BOX END REVERSIBLE RATCHET
WRENCH

- 10*12,14*17MM
- Of chrome-vanadium steel, hot drop-forged and heat-treated
- Patented design enables quick working in tight spaces (5° swing)
- Slim dimensions further ease working in confined areas
- 15° offset, reversible
- Meets ANSI, DIN and federal torque specifications, and U.S. patented



■ **WR-9110**
12PCS FLEXIBLE RATCHET WRENCH SET
· 8,9,10,11,12,13,14,15,16,17,18,19MM



■ **WR-9110-6-M**
■ **WR-9110-27-S**
FLEXIBLE RATCHET WRENCH

Item No.	Size	Finish	Item No.	Size	Finish
WR-9110-6-M	6mm	Mirror	WR-9110-11-S	11mm	Stain
WR-9110-6-S	6mm	Stain	WR-9110-12-M	12mm	Mirror
WR-9110-7-M	7mm	Mirror	WR-9110-12-S	12mm	Stain
WR-9110-7-S	7mm	Stain	WR-9110-13-M	13mm	Mirror
WR-9110-8-M	8mm	Mirror	WR-9110-13-S	13mm	Stain
WR-9110-8-S	8mm	Stain	WR-9110-14-M	14mm	Mirror
WR-9110-9-M	9mm	Mirror	WR-9110-14-S	14mm	Stain
WR-9110-9-S	9mm	Stain	WR-9110-15-M	15mm	Mirror
WR-9110-10-M	10mm	Mirror	WR-9110-15-S	15mm	Stain
WR-9110-10-S	10mm	Stain	WR-9110-16-M	16mm	Mirror
WR-9110-11-M	11mm	Mirror	WR-9110-16-S	16mm	Stain

Item No.	Size	Finish	Item No.	Size	Finish
WR-9110-17-M	17mm	Mirror	WR-9110-22-S	22mm	Stain
WR-9110-17-S	17mm	Stain	WR-9110-23-M	23mm	Mirror
WR-9110-18-M	18mm	Mirror	WR-9110-23-S	23mm	Stain
WR-9110-18-S	18mm	Stain	WR-9110-24-M	24mm	Mirror
WR-9110-19-M	19mm	Mirror	WR-9110-24-S	24mm	Stain
WR-9110-19-S	19mm	Stain	WR-9110-25-M	25mm	Mirror
WR-9110-20-M	20mm	Mirror	WR-9110-25-S	25mm	Stain
WR-9110-20-S	20mm	Stain	WR-9110-26-M	26mm	Mirror
WR-9110-21-M	21mm	Mirror	WR-9110-26-S	26mm	Stain
WR-9110-21-S	21mm	Stain	WR-9110-27-M	27mm	Mirror
WR-9110-22-M	22mm	Mirror	WR-9110-27-S	27mm	Stain



■ **WR-9104**
 14" OF 3 IN 1 CUTTER(BOLT, WIRE, CABLE) WITH DUAL-COLOR GRIP

- Of chrome vanadium steel, drop-forged
- 3-in-1 model; costs 1/3 of a tin snip + wire cutter + cable cutter
- Suitable for cutting medium-carbon-steel bolts featuring 8.8-grade strength
- Thick, ergonomic grip has an extended service life
- Meets DIN and ANSI specifications



■ **WR-9104-1**
 18" OF 3 IN 1 CUTTER(BOLT, WIRE, CABLE) WITH DUAL-COLOR GRIP

- Of chrome vanadium steel, drop-forged
- 3-in-1 model; costs 1/3 of a tin snip + wire cutter + cable cutter
- Suitable for cutting medium-carbon-steel bolts featuring 8.8-grade strength
- Thick, ergonomic grip has an extended service life
- Meets DIN and ANSI specifications



■ **WR-9104-2**
 24" OF 3 IN 1 CUTTER(BOLT, WIRE, CABLE) WITH DUAL-COLOR GRIP

- Of chrome vanadium steel, drop-forged
- 3-in-1 model; costs 1/3 of a tin snip + wire cutter + cable cutter
- Suitable for cutting medium-carbon-steel bolts featuring 8.8-grade strength
- Thick, ergonomic grip has an extended service life
- Meets DIN and ANSI specifications



■ **WR-9104-3**
 30" OF 3 IN 1 CUTTER(BOLT, WIRE, CABLE) WITH DUAL-COLOR GRIP

- Of chrome vanadium steel, drop-forged
- 3-in-1 model; costs 1/3 of a tin snip + wire cutter + cable cutter
- Suitable for cutting medium-carbon-steel bolts featuring 8.8-grade strength
- Thick, ergonomic grip has an extended service life
- Meets DIN and ANSI specifications



■ **WR-9104-4**
 36" OF 3 IN 1 CUTTER(BOLT, WIRE, CABLE) WITH DUAL-COLOR GRIP

- Of chrome vanadium steel, drop-forged
- 3-in-1 model; costs 1/3 of a tin snip + wire cutter + cable cutter
- Suitable for cutting medium-carbon-steel bolts featuring 8.8-grade strength
- Thick, ergonomic grip has an extended service life
- Meets DIN and ANSI specifications



■ **WR-9105**
 7" & 9" UNIVER SAL GRIP

- Improved to work with higher safety, speed and stability than conventional models



■ **WR-9063**

EZ EXTENDING WRENCH

- The tool is special design for extend the wrench, hex keys and pipe works.
- 340mm length



■ **WR-9082**

MASTER WRENCH FOR TIE ROD

- This wrench is design to install and remove ball joints without remove the steering rack.
- Apply with 1/2" Dr. ratchets and capacity range 30-40mm



■ **WR-9124**

DIESEL FILTER WRENCH

- Special design for desel filter
- Suitable for Audi / VW/ Skoda / Seat 2.0l TDi CR

55 Power Tools



NEW

■ **PT-9002**
IMPACT WRENCH & 3.0AH BATTERY(LI-ION),
220N-M



NEW

■ **PT-9003**
IMPACT WRENCH & 3.0AH BATTERY(LI-ION),
240N-M

Model	Voltage	Max Torque	No-Load Speed	I.P.M	Weight	Capacities	Wood Screws	Self Tapping Screws	General Screws	High Strength Bolts
PT-9002	DC14.4V	220nN.m	0-2,5000 RPM	3,000 IPM	1.5KG	12.7mm (1/2")	5.1mm x 75mm	5.1mm x 75mm	M5-M12	M5-M10
PT-9003	DC18V	240nN.m	0-2,5000 RPM	3,000 IPM	1.65KG	12.7mm (1/2")	5.1mm x 75mm	5.1mm x 75mm	M8-M14	M8-M12



NEW

■ PLC-9011

MULTI-POSITION INTERNAL&EXTERNAL PLIER

- This is special design for multi-angel internal & external pliers set.



■ OF-9029

FUEL FILTER REMOVAL TOOL

- Replacing the fuel filter with all application car model



KAUPA INTERNATIONAL CO., LTD.

No. 2-7, Ln. 108 West, Yongfong Rd.,
Taiping Dist., Taichung City 411, Taiwan

TEL: 886-4-2277-8689 FAX :886-4-2277-8289

E-mail: service@kaupa.com.tw

www.kaupa.com.tw

