

kaupa



2016-17

INDEX

P.2-9	TIMING TOOL SERIES
P.10-17	BODY SERIES
P.18-23	PULLER & UNDER CAR SERIES
P.24-29	ENGINE TOOL SERIES
P.30-34	SOCKET & TOOL SET SERIES
P.35	OIL EXTRACTOR SERIES
P.36-37	TESTER SERIES & BATTERY & ELECTRICITY SERIES
P.38-39	GENERAL TOOL SERIES
P.40	BRAKE SERIES
P.41	BRAKE SERIES & OIL FILTER WRENCH SERIES



TT-9199

BMW FUEL INJECTOR REMOVAL AND INSTALLATION TOOL<N55>

- A specially designed tool to safely remove and install the high pressure, direct-injection fuel injectors on the BMW N55 engine family.
- Applicable to the following engine families that are used broadly across the BMW range of vehicles:
N55 – Single-turbo Inline 6, produced from 2009-present featuring dual VANOS, Valvetronic and Direct Injection



TT-9200

BMW FUEL INJECTOR INSTALL & REMOVAL TOOL (N20,N55)

- This tool is designed for removal and installation the fuel injector.
- BMW OEM no. ref: 130320.
- Application: BMW N20 & N55 engine.



TT-9195

TWIN CAM PETROL ENGINE SETTING/LOCKING KIT VAUXHALL/OPEL SERIES ENGINES

- Engine Codes : LWD, L2Z, LDD, LUU/A14XFL, LDD/A14XER, LDD/A14XEL, LUJ/114NET, LUJ/A14NEL, A10XEP, A12XEL, A12XER, A14XEL, A14XER, A14NEL, LUJ/A14NET, LDD/A14XER, LUJ/A14NET, LUH/A14NEL, LUJ/A14NET, LUJ/A14NEL, L2Q/A12XEL, LDC/A12XER, LWD/A12XEL, LDD/A14XEL, LDD/A14XER
- Application: Adam, Ampera, Astra-J, Aveo, Corsa-D, Insignia, Meriva-B, Mokka, Zafira-C Tourer
- Engines 1.0/1.2/1.4



TT-9222

BMW ENGINE TIMING TOOL SET(S54)

- For checking and setting camshaft timing while installing VANOS adjustment unit on S54 engines.
- Applications:M3 cabriolet (00~06),sports coupe (99~06),CSL sports coupe (03~04)
- OEM Ref:119140,119130,119170,117340,115100,117160,112300.



TT-9207

ENGINE TIMING TOOL KIT-VAUXHALL/OPEL

- Engine Codes LWD, L2Z, LDD, LUU/A14XFL, LDD/A14XER, LDD/A14XEL, LUJ/114NET, LUJ/A14NEL, A10XEP, A12XEL, A12XER, A14XEL, A14XER, A14NEL, LUJ/A14NET, LDD/A14XER, LUJ/A14NET, LUH/A14NEL, LUJ/A14NET, LUJ/A14NEL, L2Q/A12XEL, LDC/A12XER, LWD/A12XEL, LDD/A14XEL, LDD/A14XER
- Application: Adam, Ampera, Astra-J, Aveo, Corsa-D, Insignia, Meriva-B, Mokka, Zafira-C Tourer
- Engines 1.0/1.2/1.4



TT-9210

BENZ TIMING TOOL SET (M270)

- This holding device makes possible holding down and fixing of the camshaft.
- This makes it possible to slacken and tighten the bolts attaching the camshaft gears.
- BENZ OEM ref: 270 589 00 61 00
- Applicable: Benz M133, M270



TT-9215

BENZ ENGINE TIMING TOOL SET(M651)

- The retaining device makes it possible to position the camshafts in the installed position, also for turning, installing, and removing the crankshaft pulley.
- Benz OEM number: 651589014000, 651589004000, 651589024000.
- Application: Benz OM 651 Volume 2.0D / 2.2D / 2.5D.
- Models of car: Benz GLK (W204), Benz CLA 200 CDI, Benz CLA 220 CDI, Benz A Class W176, Benz Sprinter 316CDI OM651.



TT-9218

BMW TIMING TOOL KIT - S65

- To locate the camshaft in TDC position and correct the vanos angle.
- BMW number included in the kit: 119 970, 115 290, 115 320, 115 370.
- Applicable: BMW E90 M3 and E92 M3 with S65 engine (2007–2013).

TT-9208

BENZ TIMING TOOL SET(M276)

- For positioning the camshafts in the installed position
- suitable for following Mercedes models:
 CL 500 / 63 AMG (C 216) 2010–2013
 S 500 / 63 AMG (C 217) as of 2014
 CLS 300 (C 218) as of 2012
 E 300 / 350 / 400 (C/A 207) as of 2011
 CLS 350 / 400 / 500 / 63 AMG (C/X 218) 2011–2014
 SLK 350 (R 172) as of 2011
 SL 350 / 400 / 500 / 63 AMG (R 231) as of 2012
 S 500 PLUGIN HYBRID (V 222) as of 2014
 ML 300 / 350 / 500 / 63 AMG (W 166) as of 2011
 C 400 (W 205) as of 2014
 E 400 HYBRID (W 212) as of 2012
 G 63 AMG (W 463) as of 2012
 E 300 / 350 / 400 / 500 / 63 AMG (W/S 212) as of 2011
 C 350 (W/S/C 204) as of 2011
 S 350 / 500



TT-9223

ENGINE TIMING TOOLS- VAUXHALL / OPEL

- For adjusting the engine timing
- Suitable for following Opel / Vauxhall models:
 Adam 1.2 LWD • 1.4 L2Z • 1.4 LDD (2012)
 Ampera 1.4 LUU / A14XFL (2011)
 Astra J 1.4 LDD / A14XER • 1.4 LDD / A14XEL
 1.4 LUJ / A14NET • 1.4 LUJ / A14NEL
 1.4 LUJ / A14NET (2009)
 Corsa D 1.0 A10XEP • 1.2 A12XEL • 1.2 A12XER
 1.4 A14XEL • 1.4 A14XER • 1.2 A12XER
 1.4 A14NEL (2009)
 Insignia 1.4 LUJ / A14NET (2011)
 Meriva B 1.4 LDD / A14XER • 1.4 LUJ / A14NET
 1.4 LUH / A14NEL (2010)
 Mocha 1.4 LUJ / A14NET (2012)
 Zafira Tourer C 1.4 LUJ / A14NEL
 1.4 LUJ / A14NET (2011)
 Aveo 1.2 L2Q / A12XEL • 1.2 LDC / A12XER
 1.2 LWD / A12XEL • 1.4 LDD / A14XEL
 1.4 LDD / A14XER (2011)



TT-9202

PORSCHE CAYENINE CAMSHAFT ALIGNMENT

- This tool is designed to adjust the timings for the camshafts.
- Used to R&R crankshaft pulley bolt.
- 2009 Porsche Cayenne Turbo (9PA) V8-4.8L Turbo
- Camshaft Adjustments.
- Setting camshaft timing on 4.8 liter DFI engine.
- For Cayenne V8 up to 2007 and from 2008 Cayenne and Panamerica





TT-9231

BENZ TIMING CHAIN RIVETING TOOL

- Use to press on external lugs and rivets of dip-type fasteners of simplex and duplex roller chain
- Application: Benz Model 615, 616, 617, M102, M103, 116, 272, 272, BMW and SAAB



TT-9228

ENGINE TIMING TOOL KIT - FORD 1.0 ECOBOOST 3 CYLINDER PETROL ENGINE

- Ford Applications:
Focus ('12-), Fiesta ('13-), B-Max ('12-), C-Max ('12-), Transit Connect ('13-), Ecosport ('13-), Grand C-Max ('12-), Tourneo Connect ('14-), Mondeo ('14-), Transit Courier ('14-)
- Engine Codes:
M1DA, M1JA, M1JE, M2DA, M2GA, P4JA, P4JB, SFJA, SFJB, XMJA, XMJB



TT-9229

TIMING CHAIN GUIDE TOOL MERCEDES BENZ 651

- Skip protection when replacing the timing chain and the camshaft sprockets.
- The expansion of the camshaft sprockets deleted.
- Exact positioning.
- No unexpected skipping the timing chain in the engine
- Correct valve movement when turning the crankshaft is ensured.
- Specially developed for Mercedes-Benz OM 651 with engine code.



TT-9227

17PCS VW/AUDI VAG 1.8/2.0 TSI/TFSI (EA888) ENGINE TIMING TOOL

- Use for correct the camshaft and crankshaft timing position.
- Four-cylinder EA888 petrols: 1.8 R4 16v TSI/TFSI, 2.0 R4 16v TSI/TFSI
- Applications:
2006~2013 VAG series TSI, TFSI EA888 engine(1.8L, 2.0L).

TT-9212

AUDI & VW TIMING TOOL KIT

- Product Description:
This tool kit is special design for setting camshaft timing on 2009+ VW and Audi 2.0 L Turbo engines. Also for VW Group 1.0 Petrol Includes:
 - T10477 Camshaft Locking Tools
 - T10355 Crankshaft Counter Holder
 - T40271 Two Camshaft Locking Cams used to lock cams at TDC
 - T10368 Press Piece used for removing the lower timing chain cover
 - T40196 Four camshaft pins
 - T40267 Two tensioner locking clips
 - VW 10352 Assembly Tool -
- Application Make: VW / Audi
- Application Detail:
Model year 2009 and newer 2.0L Turbo engines with the following engine codes: CABA, CABB, CABD, CDAA, CDAB, CDHA, CDHB, CGYA, BZB, CUA, CAEA, CAEB, CAWA, CAWB, CBFA, CCTA, CCTB, CCZA, CCZB, CCZC, CDNB, CDNC, CESA, CFKA, CCZD, CDZA, CADA, CFKA, CETA
- 1.0L 3-Cylinder, Engine Code : CHYA, CHYB, CPGA.



TT-9212-2

AUDI & VW TIMING TOOL KIT

- Product Description:
This tool kit is special design for setting camshaft timing on 2009+ VW and Audi 2.0 L Turbo engines. Includes:
 - T10355 Crankshaft Counter Holder
 - T40271 Two Camshaft Locking Cams used to lock cams at TDC
 - T10368 Press Piece used for removing the lower timing chain cover
 - T40196 Four camshaft pins
 - T40267 Two tensioner locking clips
 - VW 10352 Assembly Tool
- Application Make: VW / Audi
- Application Detail:
Model year 2009 and newer 2.0L Turbo engines with the following engine codes: CABA, CABB, CABD, CDAA, CDAB, CDHA, CDHB, CGYA, BZB, CUA, CAEA, CAEB, CAWA, CAWB, CBFA, CCTA, CCTB, CCZA, CCZB, CCZC, CDNB, CDNC, CESA, CFKA, CCZD, CDZA, CADA, CFKA, CETA

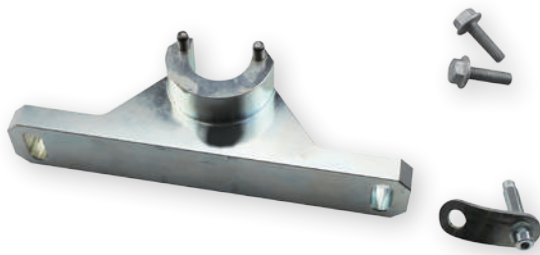


TT-9212-3

ENGINE TIMING TOOL FOR NEW JETTA/ SANTANA/GRAN LAVIDE/GOLF 7

- T10477 Engine Timing Tools For New Jetta/Santana/ Gran Lavida/Golf 7
- Locks camshaft when checking and adjusting timing
- 1,0L MPI - petrol
- 1,0L MPI (GNC) - petrol

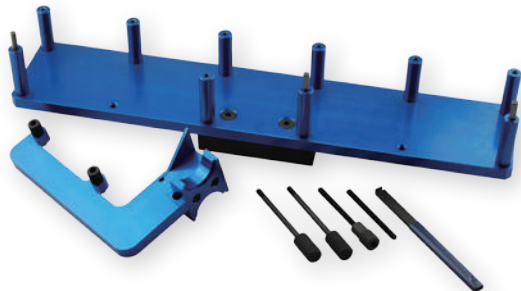




TT-9238

BMW BALANCER SHAFTS REMOVING AND REFITTING KIT <N20>

- The locking devices for balancer shafts removing and refitting tools.
- 4.5mm thick alignment pin to securely position the counterbalance shafts and crankshaft. < tool # 2 212 825 >.
- Positioning the counterbalance shafts with special tools # 2 318 117



TT-9209

BMW (N62/N62TU/N73) CAMCARRIER TOOL SET

- For installing and removing the bearing brackets (camcarrier)
- Applicable: BMW N62 / N62TU / N73



TT-9234

PETROL ENGINE SETTLING/LOCKING KIT-VAG 1.2/1.4 Tsi/BELT DRIVER

- Suitable for the latest VAG 1.2/1.4 TSi belt drive petrol engines including the 1.4 TSi ACT
- Engine Codes:
1.2 TSi: CJZA, CJZB
1.4 TSi: CGGA, CHPA, CMBA, CPVA, CRJA, CUKB, CUKC, CXSA
1.4 TSi ACT: CPTA
OE Tools: T10340, T10499, T10494, T10504, T10060A
- Applications:
Audi: A1 (12-15), A1 Sportback (12-15), A3 (13-15), A3 Sportback (12-15)
Seat: Ibiza (12-15), Leon (12-15), Toledo (12-15)
Skoda: Fabia (10-13), Octavia II (10-13), Octavia III (10-15)
VW: Golf VII (08-16), Golf VII Estate (08-16), Jetta (12-14), Polo (12-14)



TT-9211

BMW WATER PUMP HOLDER

- For holding water pump hub during removal of fan clutch.
- Applicable: BMW M60, M62 & M62 TU [V8] engines; opposite side is applicable: M10, M20 & M30 with 32mm fan clutch nuts.



TT-9236

BMW(N45/N46/N46T) BALANCE SHAFT LOCK PLATE - NEW STYLE

- Aligning the balance shaft in the TDC position during assembly and disassembly.
- Applicable: BMW N45, N46, N46T engine.



TT-9243

ENGINE TIMING TOOL KIT VAUXHALL/OPEL/SAAB/CHEVROLET

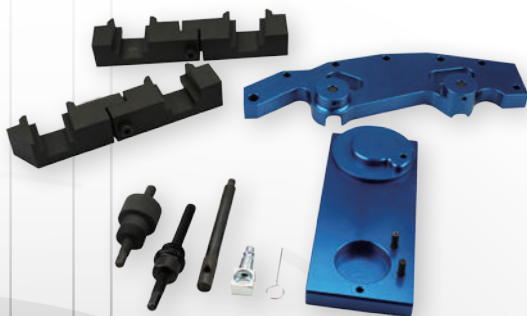
- A comprehensive timing tool kit for the 2.0lt and 2.4lt turbo charged twin cam petrol engines
- Applications: Vauxhall, Opel, Saab and Chevrolet 2008-2015
- Engine codes LHU/A20NFT, LTG/A20NHT, LDK/A20NHT, LE5/LE9, A24XE, A24XF



TT-9237

VOLVO ENGINE TIMING TOOL SET - T4, T5

- To adjust and fix angle of camshaft and crankshaft.
- Applicable: VOLVO V4 1.6L, 2.0L T4, T5 engine.



TT-9242

ENGINE TIMING TOOL SET FOR BMW M52, M54, M60, M62

- For setting and checking the engine timing
- Suitable for the following BMW models:
320 E46 323 E46 325 E46
328 E46 330 E46 520 E39
520 E60 520 E39 523 E39
525 E39 525 E60 528 E39
530 E34 540 E34 535 E39
530 E39 530 E60 728 E38
730 E65 730 E35 730 E32
735 E38 740 E32 740 E38
X3 E83 X5 E53 Z3 Z4 E85

TT-9192

AUDI/GOLF/OCTAVIA/LEON CAMSHAFT LOCK TOOL

- Locking camshaft when checking and adjusting timing.
- VW Audi Number: T10494
- Audi A3 2013 >, Golf 2013 >, Octavia 2013 >, Leon 2013 >
Assembly group: 4-cyl. injection engine (1.4 l direct injection engine, turbocharger) 4-cyl. injection engine (1.2 l direct injection engine, turbo charger)



TT-9226

ENGINE TIMING TOOL KIT CHRYSLER, JEEP

- Chrysler Grand Voyager and Jeep Cherokee
- Applications: Jeep Cherokee 2.8CRD with Engine Code ENS(51C) from 2008-2011 and Chrysler Grand Voyager with Engine Code VM64C from 2008-2011
- Equivalent to OEM VM 9991 and VM.9992
- Includes crankshaft and exhaust camshaft locking tools



TT-9232

ENGINE TIMING TOOL SET FOR VAG 1.8/2.0L FSI/TFSI

- for checking and setting the engine timing
- suitable for 1.8 / 2.0L VAG engines with engine codes: CDHB - CDNC - CFKA - CDNB,
- Built in e.g. Audi A4 / A5 (as of 2008) / A6 (as of 2012)



TT-9241

ENGINE TIMING TOOL SET FOR FIAT/FORD/SUZUKI DIESEL

- For checking and adjusting the engine timing
- Suitable for the following models:
 - Fiat Punto 1.3 JTD MultiJet 188A9.000 20032007
 - Panda 1.3 JTD MultiJet 169A1.000 & 188A8.000 20032009
 - Idea 1.3 JTD MultiJet 199A3.000 & 188A9.000 20042006
 - Doblo 1.3 JTD MultiJet 188A9.000 20042006
 - Doblo Cargo 1.3 JTD 188A9.000 20042006
 - Opel (Vauxhall): Agila 1.3 CDTi Z13DT 20032008
 - Corsa C 1.3 CDTi Z13DT 20032007
 - Combo C 1.3 CDTi Z13DT 20032009
 - Corsa D 1.3 CDTi Z13DTH & Z13DTJ 20062009
 - Astra H 1.3 CDTi Z13DTH 20042009
 - Tigra B 1.3 CDTi Z13DT 20042009
 - Meriva 1.3 CDTi Z13DT & Z13DTJ 20042009
 - Suzuki: Ignis 1.3 CDTi Z13DT 20032009
 - Wagon 1.3 CDTi Z13DT 20032009
 - Swift 1.3 CDTi Z13DT 20032010
 - Ford KA 1.3 TDCi



TT-9027

PORSCHE CAMSHAFT ALIGNMENT TOOL KIT

- 911 Carrera 4S 3.6 (2002), 996 3.4 (2002), Boxster 2.5 (1998), Boxster 2.7 (2000) Boxster 3.2 (2000)
- With chassis 986, 987, 996, 997
- OEM Refs: 9595, 9612, 9611, 9634, 9608, 9602
- Chain driven engines



BS-9157

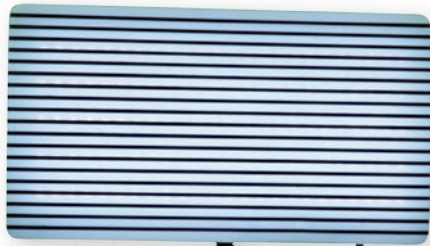
NEW DENT BOARD LIGHT SET WITH SCTION BASE

- White LED Fixture
- Suction cup with loc-line
- Available in 12 volt mobile cord

BS-9157-2

NEW DENT BOARD LIGHT SET WITH SCTION BASE

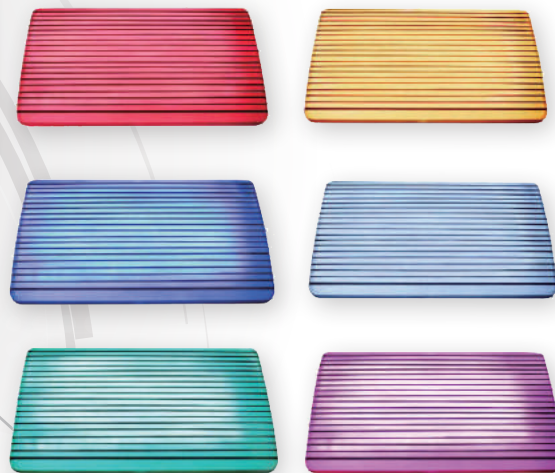
- White&Yellow LED Fixture
- Suction cup with loc-line



BS-9157-1

NEW GENERATION PDR RGB LED LIGHT SET

- Color 5050 RGB Light
- Super Bright with running low temperature
- 16 Colors, 5 Light Pattern
- 24 Key Remote Controller
- Long Lifespan > 50,000 Hours



BS-9190

HEAVY DUTY DENT PDR REPAIR LIGHT

- Portable striped LED light - 16 colors
- Battery tray
- Stainless steel frame
- Locking casters



BS-9189

STUD WELDER DENT PULLING SYSTEM

- Stud welder spot-welds pins onto the dented metal surface
- Pull the pins to pull-out the dent
- Snip the pins, then grind the rest down ---Contents Stud Welder Kit includes the 110V-220V self-contained stud gun, slide hammer puller with 2-lb. sliding weight, pack of draw pins (2mm).



BS-9250

2PCS PDR EDGE PUSH SCREW SET

- Special design with Mini Dent Puller to Jack Up Edge Dent and seems.



BS-9262

SERRATED SPATULA BLADE SET

- The Special Design For Glue Cutting



BS-9268

SMALL STRIPED REFLECTION BOARD

- A new design small reflection board that is like using a lightboard when outside
- Black strip with green fog lines



BS-9268-1

SMALL STRIPED REFLECTION BOARD

- A new design small reflection board that is like using a lightboard when outside
- Black strip with yellow reflection board



BS-9268-2

SMALL STRIPED REFLECTION BOARD

- A new design small reflection board that is like using a lightboard when outside
- Black green fog strip with white reflection board



BS-9269

LARGE STRIPED REFLECTION BOARD

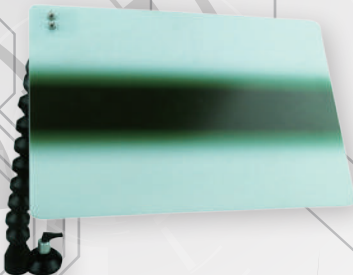
- A new design small reflection board that is like using a lightboard when outside
- Black green fog strip with yellow reflection board



BS-9269-1

LARGE STRIPED REFLECTION BOARD

- A new design small reflection board that is like using a lightboard when outside
- Black green fog strip with white reflection board



BS-9269-2

LARGE STRIPED REFLECTION BOARD

- A new design small reflection board that is like using a lightboard when outside
- Black fog strip with yellow translucent reflection board



BS-9235-BMC

10PCS TEFLON WEDGES FOR VARNISHED SURFACE KIT

- Ideal for reforming an over-compressed dent
- Hammering out without damage to paint
- Ridges are hammered out with targeted use of the hammer on the dents
- Also ideal for releasing tensioning in the sheet metal
- With interchangeable attachments
- CONTENTS:
 - Handle, short, 140 mm
 - Handle, long, 170 mm
 - Cylinder-shaped impact head
 - Impact head, wedge-shaped, round
 - Impact head, wedge-shaped, square
 - Impact head, cone-shaped, tip
 - Impact head, cone-shaped, round
 - Cylinder-shaped impact head with cone
 - Set of strike plates, 2 pcs., 180 mm



BS-9223

12PCS MULTIFUNCTIONAL HAMMER WITH CHANGEABLE HEAD FOR BODY REPAIR KITS

- Including :
 - body*1, wrench*1, screws*4, plastic board golden hammer*1, aluminum board golden hamer*1, copper alloy board golden hammer*1, stainless steel board golden hammer*1, lesser dentate board golden hammer*1, larger dentateboard golden hammer*1, flat-bottom board golden hammer*1, sharp-pointed board golden hammer*1, oblique board golden hammer*1, withdraw of tool*1



BS-9251

PDR INDUCTION HEATER REPAIR KIT

- Developed for soft dents removing
- Instant flameless heat
- The most fast way to fix hail dents, door dings and other minor soft dents •All other accessories available.



BS-9249

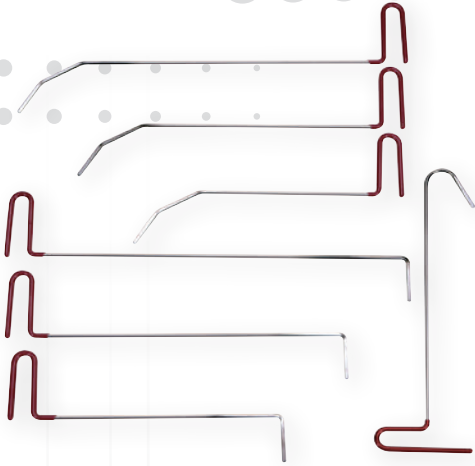
UV WINDSHIELD REPAIR LIGHT

- UV light for windshield repair
- Repairing with BS-9062 Windshield Repair Kit



BS-9221

7PCS PDR SET FOR DOOR PANEL



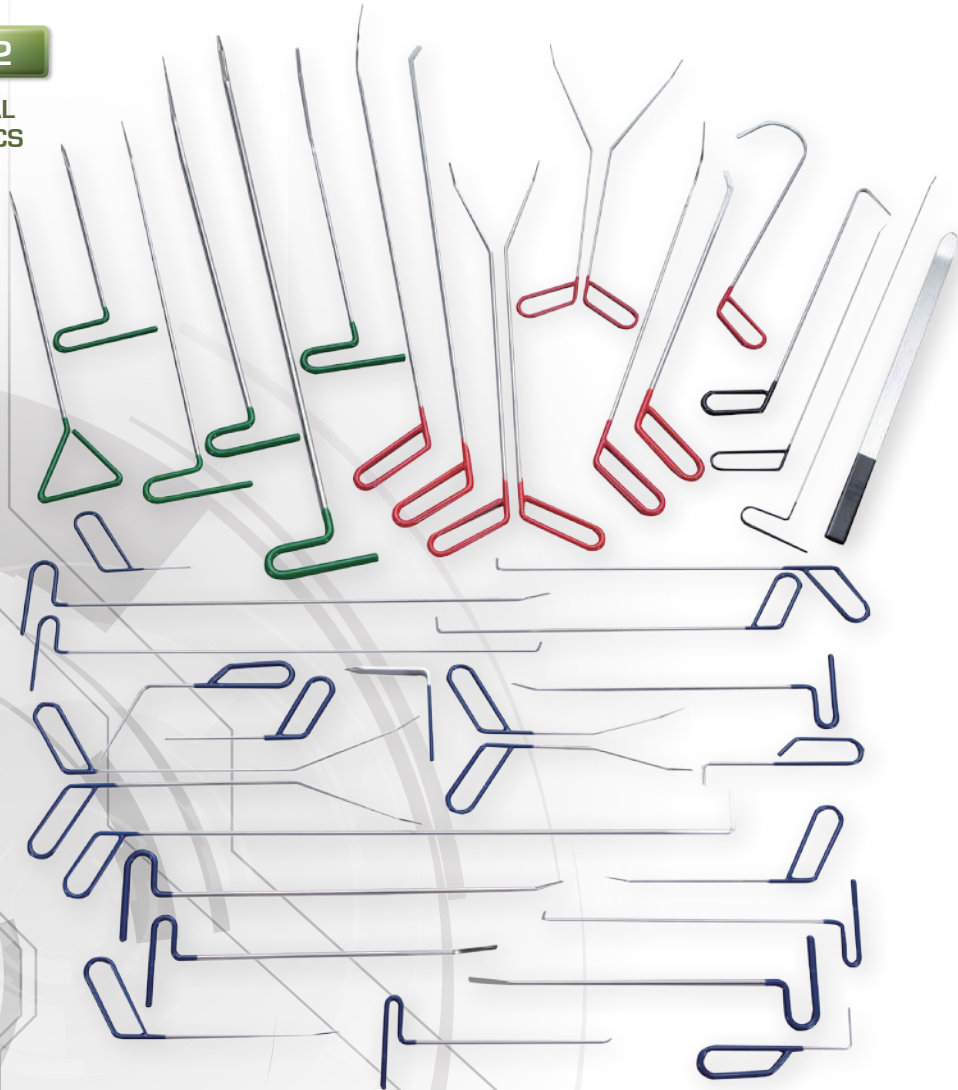
BS-9222

4PCS PDR SET FOR ENGINE HOOD PANEL



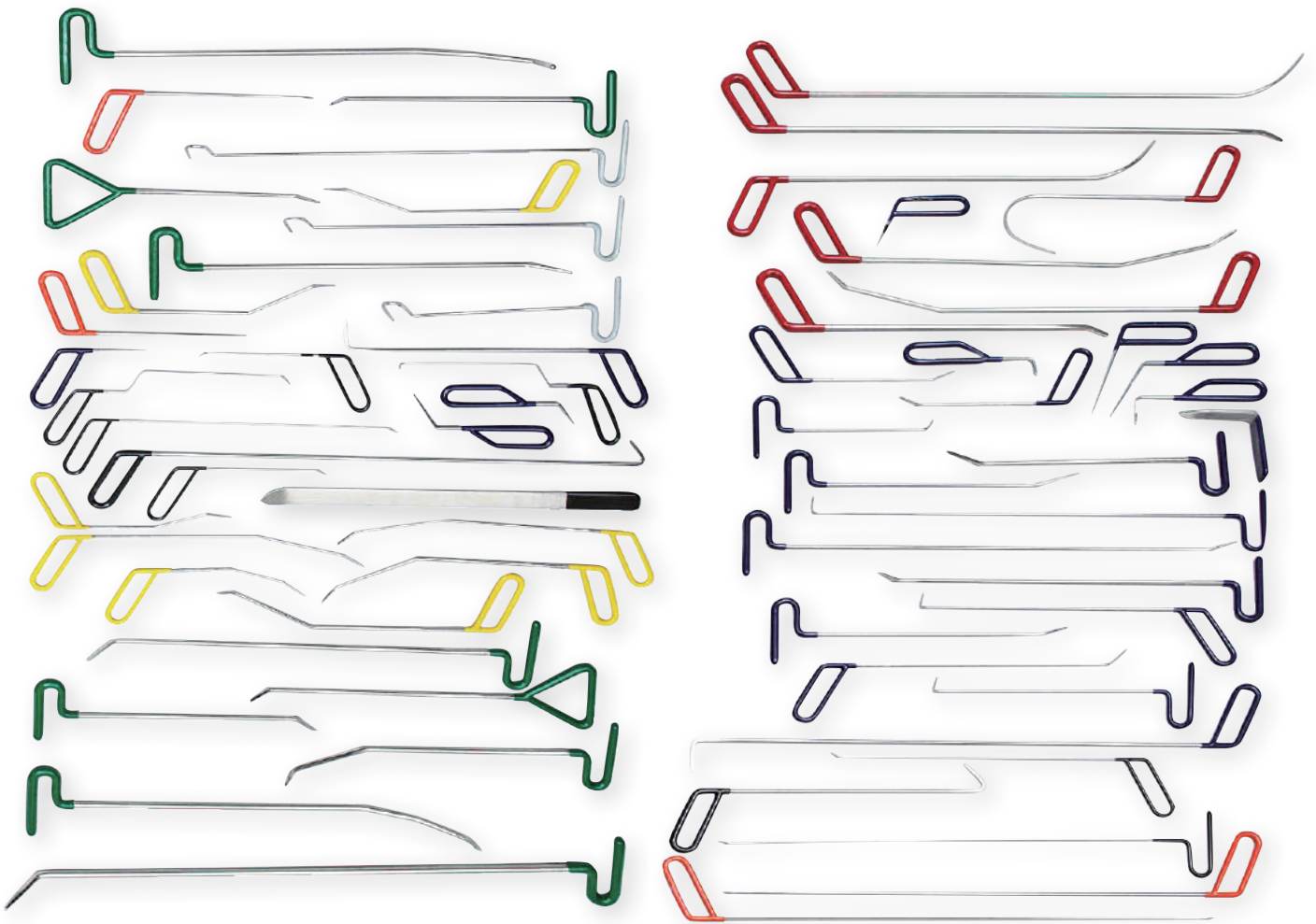
BS-9232

DENT REMOVAL
TOOL SET-42PCS



BS-9266

PROFESSIONAL DENT REMOVAL TOOL SET-65PCS



BS-9236

PAINTLESS DENT REPAIR CART

- The special designed portable stand for all PDR repair tools.
- Triple tray designed.
- All parts are easily disassembled and stored.
- Heavy-duty casters

EXAMPLE DISPLAY



BS-9237

ROLLING WORKSEAT

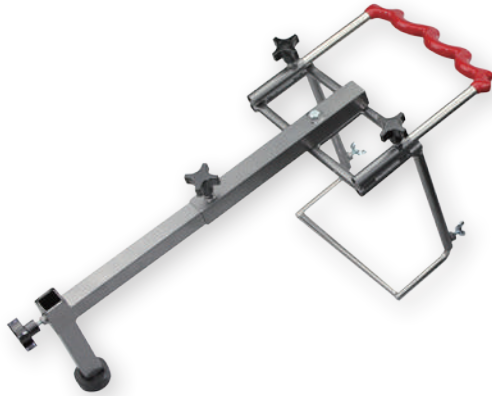
- Composite seat with 4 swivel castors, suitable for working around wheels and wheel arches
- Stops fatigue and keeps operator off cold oily workshop floor supplied for packed.
- Material: PA+PP
- Dimension:450*335*310mm



BS-9270

ADJUSTABLE TIRE SUPPORT

- Special design for wheel fender PDR repair with adjustable support rack.



BS-9213

MAGNETIC TAP DOWN TOOL

LENGTH:190MM
DIAMETER:21MM



BS-9214

MAGNETIC TAP DOWN TOOL

LENGTH:140MM
DIAMETER:16MM



BS-9215

MAGNETIC TAP DOWN TOOL

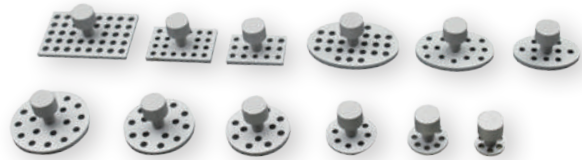
LENGTH:100MM
DIAMETER:16MM



BS-9013A-P

12PCS ALUMINUM CONNECTION TABS- POLISH FINISH

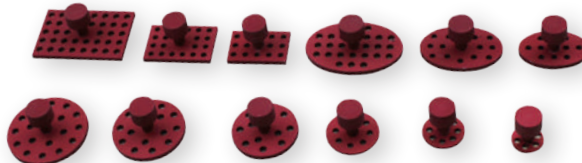
- The Full Line of New Pull-tabs In Aluminum Material
- Polish Finish



BS-9013A-R

12PCS ALUMINUM CONNECTION TABS-RED FINISH

- The Full Line of New Pull-tabs In Aluminum Material
- Red Anodizing



BS-9257

BMW WINDSHIELD WIPER ARM PULLER

- Windshield wiper arm puller with adjustable pressure plate with closing spring is versatile applicable
- Application for the BMW Series: E12, E21, E23, E24, E28, E30, E30C, E31, E32, E32 / 3, E34, E36, E36 / 2, E36 / 3, E36 / 5, E36 / 7, E36 / C, E38, E38 / 3, E39, E39PL, E46, E46/16, E46 / 2, E46 / 3, E46 / 5, E46 / C, E52, E53, E60, E65, E66, E67, E85, RR1





PC-9246

WHEEL HUB PULLER SET

- Suitable for Alfa Romeo, Audi, BMW, Citroen, Fiat, Ford, Opel, Mercedes-Benz, Skoda, Seat, Volkswagen, Mazda, Porsche, Renault, etc.
- Contents: Puller plate size: A: 90-130mm, B: 100-180mm
 Puller bolts: M12x1.25, M12x1.5, M12x1.75, M14x1.5, M16x1.5
 Hex nut: M14x1.5
 Adaptor: 2-1/4"x14UNS on M18x1.5
 Slide Hammer: 4.8kg
 Spindle: M18x1.5 x 230mm



PC-9254

HUDRAULIC-PRESS TOOL KIT

- Suitable for Mercedes W163(M-Class), Front Axle/Rear Axle and W211(E-Class), W220(S-Class), W124, W201 Front Axle.
- The support joint can be removed and installed from the vehicle in only a few minutes, without removing the wishbone.



PC-9214

ADJUST SPANNER WRENCH

- The range from 3/4" to 6 1/2"
- Special ratchet structure handle to gain more free movement in small space
- Two type: pin and hook for operating
- Size: 51-121MM, 115-166MM, 19-51MM, 31-77MM



PC-9276

10PCS WHEEL STUD INSTALLER TOOL

- Self-centering to insure that the stud is installed at the correct angle
- Kits include a bearing seat and nut
- Will not damage wheel stud threads Automotive kit.
- Sizes: M12x1.25, M12x1.50 and M12x1.75 and M14x1.5



PC-9271

BMW MINI COOPER (R50/R53) FRONT AXLE CONTROL ARM RUBBER MOUNT KIT

- To replace the rubber mount (hydro-mounts) in left or right control arm
- Applications: R50.R53(mini cooper)(W10.W17.W11)(Bushing number#31 12 6 757 561, 31 12 6 757 562)



PC-9272

THRUST PAD FOR SLIENT BEARING CHANGE

- To install and remove the slient bearing directly on the vehicle (rear axle)
- Applications: Audi, BMW, DB, Ford, Mazda, Opel, Renaultl, Seat, Skoda, VW



PC-9273

FORD&MAZDA 3 REAR TRALING ARM BUSH INSTALLER/REMOVER

- To remove and installer rear traling arm
- Applications: Ford Focus & Mazda 3



PC-9274

THRUST PAD FOR SLIENT BEARING CHANGE

- To install and remove the slient bearing directly on the vehicle (rear axle)
- Applications: R50.R53(mini cooper)(W10.W17.W11)(Bushing number#31 12 6 757 561, 31 12 6 757 562)



PC-9270

BEARING DISTANCE SLEEVE

- Adjustable distance sleeve with three pairs of top parts used in addition to the wheel bearing tools or use on the bench press
- At the base plate of the distance sleeve the diameter can be adjusted according to the wheel bearing housing
- The different top parts are selected depending on the shape of the wheel bearing housing and installed on the distance sleeve
- Additionally the top parts can be shifted separately on the guide
- Thus the distance sleeve is optimally adjustable to the wheel bearing housing shape



PC-9252

VOLVO BALL JOINT INSTALLER AND REMOVER SET

- Special designed for lower control arm ball joint removing and installing.
- With 3 adapters: M12 x 1.75 , M14 x 1.5 , M14 x 2.0(removing)
- Applicable: VOLVO S60(01~10), S80(99~06), V70(00~07), XC70(02~07), XC90(03~), XC60(09~)



PC-9193-2

5 JAW UNIVERSAL HUB AND DRUM PULLERS SET

- Removes wheel hubs mounted on tapered axles and press fit rear drum brakes.
- Five adjustable legs
- Constructed of heat - treated forged alloy steel
- Special designed for most models of car.



PC-9216

6PCS AIR HAMMER DRIFT SET

- Size:5.2mm,6.5mm,6.9mm,7.7mm,9.3mm,12.7mm
- Offers the extra driving force of an air hammer where needed.



PC-9262

6PCS BUSH PULLER SET

- To be used especially with PC-9083 Ball Joint Assembly And Disassembly Tool With C Clamp 400mm!



PC-9266

4PCS WHEEL INTERNAL THREAD KIT

- For use on vehicles that use wheel bolts.
- Application:
 - M12x1.25 For PSA.
 - M12x1.5 For Mercedes Benz and BMW
 - M12x1.75 For Volvo
 - M14x1.5 For VAG models.



PC-9248

6PCS FUEL PUMP INSTALLATION TOOL

- Professional alignment check and adjustment of P/D unit and installation of O-rings
- For VW phaeton and Touareg from '03,T5 from '04(5-cylinder and 10-cylinder diesel engines) Touareg from '04 and Audi A3 from '04(4cyl/4 valve diesel engines)



PC-9264

WHEEL ALIGNMENT TOOL

- Included gauge and wheel mount
- Perform portable

PC-9283

BMW FRONT AND REAR SEAL REMOVER AND INSTALLATION KIT

- Special designed to install and remove the front oil seal of crankshaft
- Applicable: BMW N40/N42/N45/N45T/N46/N46T/N52/N53/N54
- BMW number: 119220, 119230



PC-9275

WHEEL BEARING & HUB REMOVAL SERVICE AND REPLACEMENT KIT

1. Front, rear or A.W.D. vehicles
2. Built in self centering mechanism
3. Incorporates a roller thrust bearing
4. Lines up straight as an arrow during R and R



PC-9257

AIR INSTALLATION TOOL FOR CV BOOT

- Designed for stretching flexible CV boots on to the drive shaft assemblies of automotive vehicles.
- This new CV Boot Gun (Part Number 4806) makes easy work of a task that has always proved impossible to handle quickly and effectively.
- Using a pneumatic air supply, this tool stretches the CV boot onto the drive shaft with the minimum of effort.
- Suitable for most cars and small commercial vehicles but only in conjunction with "stretchy" style cv boots.
- Works at 4-8 bar and on a maximum diameter of 115mm.
- Specifications: CV joint diameter 20 - 115 mm
For Neoprene Uni-Fit CV Boots
Lightweight construction
Working pressure 6 - 8 bar (87 - 113 psi)
Max. air pressure 9 bar
Air inlet 1/4" NPT



PC-9263

MASTER BEARING RACE AND SEAL DRIVER

- All-in-one, self-contained precision driver with no more discs to sort through or guesswork
- Simply dial in the 3 hardened jaw construction and seat races, bearings or seals with ease
- Durable, sturdy aluminum construction, equipped with a steel capped striker shaft handle
- The 3 stepped jaw covers a range of O.D. /I.D.'s from 18.5~89mm or 0.72"~3.5"



PC-9269

MERCEDES-BENZ ASSEMBLY DEVICE

- For brake band piston B1.
- Applicable: all MERCEDES models 722.1,722.3,722.4&722.5



PC-9256

PULLING HOOK

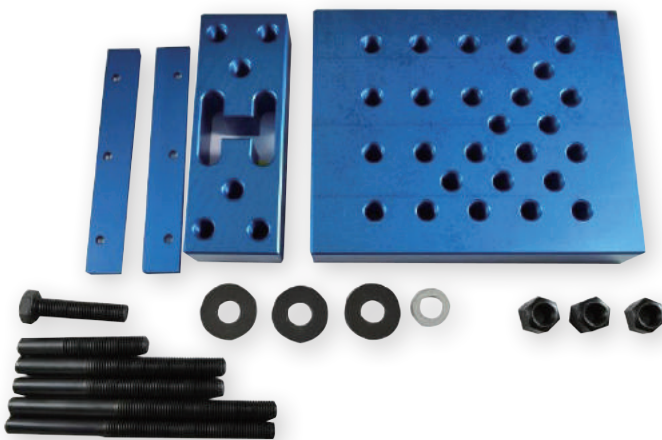
- Material: S45C Steel
- Size: M18x1.5
- For disassembly chassis frame components, e.g. control arm or suspension strut
- Also universally suitable for many straightening and pulling jobs



PC-9247

UNIVERSAL PRESS PLATE

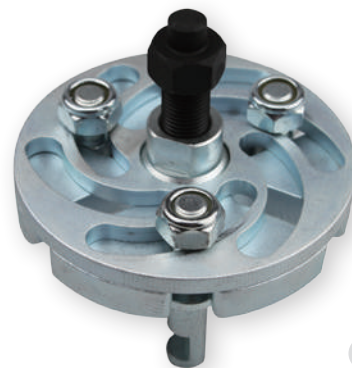
- Material: Alu.+ Cr-Mo Blue finish
- Adjusting the height form the spindle to removing the bearing form wheel hub.
- Don't use over the 30Ton.
- Suitable for the workshop.



PC-9277

TIMING PULLEY PULLER

- This tool is designed for removing drive pulleys with face grooves.
- The tool removes a pulley absolutely free of any risk of damage.
- The tool is adaptable to different pulley diameters, as the legs are adjustable.
- For removing pulleys with 3, 6, 9 slots.
- Surface finish: chrome plated, screw blackened





ET-9225

INJECTOR SHAFT CLEANING SET

- Content: Wire brushes (ø18 x 2PC, ø19 x 2PC, ø21 x 2PC, ø24 x 2PC, & ø26 x 2PC)
Cleaning brush: 9mm*100mm overall length: 300mm x 2PC
Flexible bit holder x 1PC
Adaptor with brush holder x 1PC
Mounting bar x 1PC
Twisted brush wire x 2PC
Sealing plugs x 8PC
Plastic sleeve for brush x 1PC



ET-9226

TWISTED-COOPER BRUSH CLEANING SET

- Versatile through 5 different brush size.
- Thanks to the flexible bit holder also useable for hard to reach holes.
- For cleaning soiled or rusted bores and guides:
- For example, the caliper sliding guide or the bore of the ABS sensor in the steering knuckle
- Content: 1x Brush Holder with Collet
1x Flexible Bit Holder ¼"
4x Tube Brush Ø 6 mm
4x Tube Brush Ø 8 mm
4x Tube Brush Ø 10 mm
4x Tube Brush Ø 13 mm
4x Tube Brush Ø 16 mm



ET-9230

SPACER SLEEVES TOOL (PULLER AND DRIVE-IN MANDREL)

- When replacing steering column switches, it is necessary to firstly remove the steering wheel and then to extract the spacer sleeve from the cone.
- The special design of the puller ensures that its collet chuck precisely encompasses the spacer sleeve which enables quick and smooth extraction of the spacer sleeve.
- Technical Data: Clamping range 27 - 30 mm
- Drive-in Mandrel for Spacer Sleeves
- The drive-in mandrel made of brass allows the spacer sleeve to be pushed into the steering column without risk of damage.
- Suitable for vehicle models as from 1988 onwards such as VW Golf (II and III), Jetta, Vento, Polo, Passat, etc.



ET-9236

PULLER FOR CLUTCH RELEASE SHAFT

- Intended for the removal of the clutch release shaft
- This tool is needed when removing the gearbox, for example when replacing clutches for gearbox rears
- For pulling type clutches fitted to : Mercedes, BMW, Fiat Ducato (1994 on)

ET-9200

21PCS INJECTOR REMOVAL AND DISMANTLING SET

- Universal tool kit for disassembling the injector and for preparing the removal of the injector
- Contents: Special bit insert hex 10mm:ø7.6 , ø6.6
Pull Spindle:
OT-M14×1.5, OT-M16×1.5, IT-M16×1.0, IT-M17×1.0, IT-M20×1.0, IT-M25×1.0, IT-M27×1.0, OT-M25×0.5, OT-M25×0.75, OT-M27×1
Universal joint:M18×1.5
Special socket insert 27mm ,28mm,29mm ,30mm hex
Injector gripper:12mm, 13.5mm, 16mm, 26mm



ET-9200-8SET

8PCS INJECTOR REMOVAL AND DISMANTLING SET

- Includes: Adaptors to attach to the external thread of the injectors
Forks to attach to the body of the injector
Sockets to allow the injector to be pulled from different locations
- Applications include: Citroen C5 / Jumpy / Xsara, Fiat Ducato JTD, Peugeot 206 / 307 / 406 / Boxer (2.0 / 2.2 / 2.3 HDI), Mercedes-Benz CDI (exc. A-Class (Sprinter / Vito), Opel Renault F9Q
- Hook sizes: 12, 13.5, 16 and 26mm



ET-9212

23PCS INJECTOR REMOVAL PULLER AND DISMANTLING SET

- Suitable for the removal of stubborn Bosch/Delphi diesel injectors
- Set includes 6 adaptors for different removal methods
- Features a flexible joint adaptor allowing the slide hammer to be used in restricted areas
- Content: Connecting thread (injector nozzle):M18*1.5
Slide hammer:4.8 kg
Universal joint:M18*1.5
Pull Spindle-IT-M14*1.5, OT-M16*1.0, OT-M17*1.0, OT-M20*1.0, OT-M25*1.0, OT-M27*1.0,
IT-M16*1.5, IT-M25*0.5, IT-M25*0.75, IT-M27*1.0
Injector gripper: 12MM, 13.5MM, 16MM, 26MM
Special bit insert hex 10mm:ø7.6*ø4.8 , ø6.6
Special socket insert 27mm ,25mm,29mm ,30mm hex



ET-9215-1

11PCS INJECTION NOZZLE REPAIR SET

- Material: S45C and Cr-Mo Steel
- Universal using for diesel injector pulling.
- Size: Adaptor M18x1.5-M20x1.5
Adaptor M14x1.5 for Delphi
Adaptor:M17x1 for Bosch
Adaptor:M20x1 for DENSO
Adaptor:M25x1 for SIEMENS
Adaptor:M27x1 for SIEMENS
1/2"Dr.xH10 socket
12mm Puller Mercedes-Benz CDI(A class/Sprinter/Vito)
13mm Puller Mercedes-Benz CDI engines OM 611,612,613 etc.
16mm Puller Citroen C5/Jumpy/Xsara,Fiat Ducato JTD
Peugeot 206/307/406/Boxer(2.0/2.2/2.3 HDI)





ET-9238

CYLINDER HEAD BORE JIG SET

- Permits the quick and accurate boring out of broken or torn out stud screws on cylinder heads or exhaust flanges directly on the vehicle
- Universal usage
- High time savings of up to 4 hours
- Cylinder head does not need to be removed
- Straight boring out of old screw
- Application range: Can be used universally on cylinder heads or exhaust flanges with bolt threads M8 and M10



ET-9232

18PCS SPECIAL THIN GLOW PLUG REMOVAL SOCKET SET

- Size: 3/8" Dr. universal joint socket 8-9-10mm 72L
Slot socket 8-9-10mm
1/4" Dr. Socket 8mm W/O ring inside 50L
1/4" Dr. universal joint socket 8-9-10mm 60L Special thin design
1/4" Dr. PSG-Glow plug insert 12mm socket set 6pcs
1-1/4" Dr. Extension bar 100L 1-1/4" Dr. Universal joint adaptor
- 8mm Mercedes-benz, Smart, VW, FLAT and OPEL w/diesel engines
- 9mm OPEL, FIAT, ALFA, LANCIA
- 10mm VW-AUDI diesel injection engine TDI, Mercedes-Benz CDI, SMART
- 12mm Mercedes-Benz 201 and 202 W/4 valves, OPEL, BMW, FORD



ET-9182

VW & AUDI VALVE ASSEMBLY TOOL SET

- Pressure fork with lever for assembly cartridges
- Guide plate for V8-5V and V6-TDI-4V,
- Assembly cartridge (4 cyl. 5V, 6 cyl. - 5V, V8-5V, V6-TDI-4V),
- Sealing bolt for VAS 5161/9,
- Adapter for compressed-air connection,
- Knurled screws M6,



ET-9213

DIESEL FUEL LINE PRIMING SET

- A New fuel priming set fitted with the latest male and female quick connectors for Fiat, Ford, Land Rover, Mercedes-Benz, PSA, Renault, Rover and Vauxhall/ Opel vehicles.
- Special designed to work in conjunction with the low pressure fuel circuit, to reintroduce fuel back up to the fuel line after maintenance.
 - Clear pipes tube allow visual detection of any air within the fuel system or any air being inadvertently drawn into the fuel line.
 - Two universal connectors and one clear pipe allow connection to older vehicles not fitted with quick release connectors.

ET-9235

SPECIAL WRENCH SET



- Designed to loosen and tighten hard-to-reach screws on fan clutch, pulley, tensioner etc.
- 8 mm Suitable the Mercedes engines M102, M103, OM601, OM602, OM603, OM605 and OM606.
- For loosening and tightening the fan clutch and pulley at the water pump.
- When removing and installing a V-belt, the automatic tensioner pulley needs to be tensioned by means of the special wrench so as to release the tension on the V-belt.
- For removing and installing the idler pulley, for example, when replacing a timing belt or performing an engine repair.
- T45 Suitable the Renault 2.2 Diesel engines (G8T), e.g. Espace, Laguna, Safrane etc.
- T60 Suitable the BMW 5-Series (E60) 2.0 (M54) petrol engines and Mercedes C-Class (W203) 1.8 (OM271) petrol engines etc.
- T50 Suitable the Renault 1.4 and 1.6 TwinCam petrol engines as found in: Clio III, Megane / Scenic II, Laguna II, Modus and Kangoo.
- T60x40 Suitable the VW-Audi 2.7 and 3.0 V6 TDI Diesel engines, e.g. Audi A4, A5, A6, A8, Q5 and Q7; VW Phaeton and Touareg.



ET-9237

IMPACT EXTRACTOR FOR PRE-CHAMBER FOR MERCEDES ENGINES

- Ideal for removing trapped diesel pre-combustion chambers
- Robust design
- Enables short and intensive impact through impact weight
- Application range: Mercedes engines OM615, OM616, OM617, OM601, OM602, OM603, OM604, OM605 and OM606



ET-9231

28PCS OIL DRAIN PLUG KEY SET

- Suitable for sump plugs, engines, gear box and back axle
- Chrome Vanadium keys with satin finish
- Size: Hex key: 8/10/12/13/14/17mm
Square: 8/10mm
Star(Torx): T45
M16 Plug Socket
Triangular -10mm
Sockets (Magnet): 13/ 14/ 17/ 18/ 19/ 21mm

ET-9209

8PCS NEW COMMON RAIL INJECTOR REPAIR SOCKET SET

- Materia:Cr-V and S45C
- 1/2"Dr.
- The sockets are required to loosen and remove the injectors inside screw .
- Suitable For Bosch Denso,Siemens Cr Injectors



ET-9210

6PCS BRAKE CALIPER TOOL

- Materia:Cr-V Steel
- Drive:1/4"Dr.
- Size:H6-H7-H8-H9
- Special design for the brake caliper repairing



ET-9201

HOSE CLIP PLIERS 45-DEGREE

1. Hose Clip in 45 Degree Angle
2. 30mm x 20mm Face
3. Locking Device



ET-9211

6PCS PSG-GLOW PLUG INSERT SOCKET SET

- Materia:Cr-V Steel Chrome plated finish
- Size: 1/4"Dr.x12mm
- The PSG-Glow plugs with pressure sensor should be mounted with protecting cap in order to save the plug-in connection of the PSG-Glow plugs from pollution and electrostatic charging.
- Suitable eg for Audi, Volkswagen and Opel (eg. Dür PSG glow plugs with OE no. General Motors GM 55564163/55577419, Opel 18 26 354/12 14 061, VW 03L905 061 D)



ET-9221

IGNITION COIL PULLER FOR VAG

- Application: Golf 2013 onwards, Audi A3 2013 onwards, Seat Leon 2013 onwards and Octavia 2013 onwards
- With 4-cyl injection engine 1.2l/1.4l direct injection engine, turbocharger and 4 cyl direct injection 2.0l 4v turbocharger chain drive Generation 111
- Equivalent to OEM T10530
- Used for removing pencil-type ignition coil on 4-cyl direct injection Generation 3 VAG petrol engines



ET-9224

SPECIAL DRAIN PLUG KEY 1/4"DR. *H12*38L

- Developed specifically for the plastic sump plugs found on the latest VAG range since 2012.
- 1/4" drive.
- Applications:
Audi A1, A3, A4, A5, A6, A7, Q3, Q5, Q7, TT, TTS
Seat Alhambra, Leon, Toledo
Skoda Octavia, Rapid, Superb, Yeti
VW Beetle, Caddy, CC, Golf, Jetta, Passat, Polo, Scirocco, Sharan, Tiguan, Touran



ET-9224-1

10PCS PLASTIC DRAIN PLUG

- Patented Sump plug to suit the later VAG 1.2, 1.4, 1.8, 2.0 TFSI and 1.6, 2.0 TDI engines from 2012 onwards.
- Plastic Sump Plug with O-Ring M14 x 1,5 x 22 mm, replaces OEM 06L 103 801.
- Fits on:
Audi (all models) since 2012
Seat Alhambra, Leon, Toledo since 2013
Skoda Octavia, Rapid, Superb, Yeti since 2013
Volkswagen Beetle, Caddy, CC, Golf, Jetta, Passat, Polo, Scirocco, Sharan, Tiguan, Touran since 2013



ET-9233

3PCS VISCOUS FAN WRENCH SET FOR LAND ROVER

- Special design for turning the lock nuts on Thermo-Viscous .
- Suitable for Land Rover Discovery 3 & 4, New Range Rover, Range Rover Sport (4.2/4.4 petrol and 2.7 TD V6)
- Equivalent to OEM 303-1142, 303-1143, 303-1167





ST-9197

22PCS WHEEL LOCKING KEY SET FOR AUDI

22pc Special Design Audi Wheel Locking Key Set for Anti-Theft Wheel Nuts.

Suitable for most Audi vehicles 2002-2012

Supplied with a 1/2 in. Dr Alloy Wheel Socket Contents : Type A-B-C-E-F-G-H-I-J-L-M-N-P-Q-R-S-T-V-W-X



ST-9209

22PCS WHEEL LOCKING KEY SET FOR BMW

22 Pcs Special Design shape for Anti-Theft Locking Nuts Set

Contents: #41, #42, #43, #44, #45, #46, #47, #48, #49, #50, #51, #52, #53, #54, #55, #56, #57, #58, #59, #60



ST-9277

22PCS SPECIAL WHEEL NUT SOCKET SET FOR VAG

Special Design for Anti-Theft Locking Nut set

Contents: #521, #522, #523, #524, #525, #526, #527, #528, #529, #530, #531, #532, #533, #534, #535, #536, #537, #538, #539, #540



ST-9173

BMW WHEEL SCREW LOCK SOCKET SET

Description:

- Operate with 17mm socket.
- Contents: #30(13PT), #31(15PT), #32(16PT), #33(17PT), #34(18PT), #35(19PT), #36(20PT), #37(21PT), #38(22PT), #40(23PT).
- Applicable for Most BMW



ST-9174

VW WHEEL SCREW LOCK SOCKET SET

- Contents:ABC-0 10 teeth <PT>,ABC-1 11teeth,ABC-2 13teeth,ABC-3 14teeth,ABC-4 15teeth,ABC-5 16teeth,ABC-6 17teeth,ABC-7 9teeth,ABC-8 20teeth,ABC-9 22teeth



ST-9278

10PCS BMW WHEEL SCREW LOCK SOCKET SET

- Contents:#11/15PT ;#12/14PT ;#13/16PT ;#14/12PT ;#15/11PT, #16/10PT ;#17/7PT ;#18/13PT ;#19/8PT ;#20/9PT



ST-9284

12PCS WHEEL LOCKING KEY SET FOR MERCEDES BENZ

- Contents:5A,5C,5D,5E,5F,5G,5N,5L,5P,5X



ST-9286

3/4" DR. 8PCS DRIVE SHAFT SOCKET SET

- H14-17-19 x60L
- 27-30-32-34-36MMx90L



ST-9254

1/4" 37PC DR. 6PT SOCKET WRENCH SET

- 13 - SOCKETS : 4-4.5-5-5.5-6-7-8-9-10-11-12-13-14 MM
- 1 - RATCHET HANDLE
- 1 - UNIVERSAL JOINT
- 1 - 150MM DOUBLE -END SPINNER HANDLE WITH 2-TONE GRIP
- 2 - EXTENSION BARS : 50 -150 MM
- 1 - 115MM SLIDING T-BAR
- 1 - QUICK RELEASE BIT HOLDER
- 17 - S2x1/4"x25L BIT :
 - 2 - PHILLIPS : NO. 1-2
 - 2 - POZIDRIV : NO. 1-2
 - 3 - SLOTTED : 4-5.5-6.5 MM
 - 4 - HEX : 3-4-5-6 MM
 - 6 - TX:T10--T15-T20-T25-T27-T30-T40



ST-9255

3/8" 53PC DR. 6PT SOCKET WRENCH SET

- 16 - SOCKETS : 8-9-10-11-12-13-14-15-16-17-18-19-20-21-22-24 MM
- 1 - RATCHET HANDLE
- 1 - UNIVERSAL JOINT
- 2 - EXTENSION BARS : 125 -250 MM
- 1 - 3/8"DR.(M) X 1/2"DR. (F) ADAPTOR FOR SLIDING T-BAR
- 3 - SPARK PLUG SOCKET : 14-16-18 MM
- 1 - 1/2"DR(F) X 10MM HEX(F) COUPLER
- 29 - 10mm x 30L BIT :
 - 9 - TX:T20-T25-T27-T30-T40-T45-T50-T55-T60
 - 8 - RIBE : RM5-RM6-RM7-RM8-RM9-RM10-RM11-RM12
 - 7 - HEX : 4-5-6-7-8-10-12 MM
 - 5 - SPLINE : 5-6-8-10-12 MM



ST-9256

1/2" 62PC DR. 6PT SOCKET WRENCH SET

- 17 - SOCKETS : 10-11-12-13-14-15-16-17-18-19-20-21-22-24-27-30-32 MM
- 9 - "E" SOCKETS : E10-E11-E12-E14-E16-E18-E20-E22-E24
- 1 - RATCHET HANDLE
- 1 - UNIVERSAL JOINT
- 2 - EXTENSION BARS : 125 -250 MM
- 1 - 1/2"DR.(M) X 3/8"DR. (F) ADAPTOR FOR SLIDING T-BAR
- 2 - SPARK PLUG SOCKET : 16-21 MM
- 1 - 1/2"DR(F) X 10MM HEX(F) COUPLER
- 29 - 10mm x 30L BIT :
 - 9 - TX:T20-T25-T27-T30-T40-T45-T50-T55-T60
 - 8 - RIBE : RM5-RM6-RM7-RM8-RM9-RM10-RM11-RM12
 - 7 - HEX : 4-5-6-7-8-10-12 MM
 - 5 - SPLINE : 5-6-8-10-12 MM



ST-9264

1/4" DR. 6PT 29PCS SOCKET WRENCH SET

- 12-6PT Socket:4-4.5-5-5.5-6-7-8-9-10-11-12-13MM
- 1-Ratchet Handle
- 1-Sliding Bar
- 1-Universal Joint
- 2-Extension Bar: 2"&4"
- 2-PH Bit Socket(37L):PH1-PH2
- 2-PZ Bit Socket(37L):PZ1-PZ2
- 5-Hex Bit Socket(37L):H3-H4-H5-H6--H8
- 3-SL Bit Socket(37L):SL4-SL5.5-SL6.5



ST-9265

1/4" DR. 6PT 42PCS SOCKET WRENCH SET

- 13-6PT Socket:4-4.5-5-5.5-6-7-8-9-10-11-12-13-14MM
- 4-6PT Deep Socket:8-10-11-13MM
- 1-Ratchet Handle
- 5-Hex Bit Socket(37L):H3-H4-H5-H6-H8
- 3-SL Bit Socket(37L):SL4-SL5.5-SL6.5
- 3-PH Bit Socket(37L):PH1-PH2-PH3
- 3-PZ Bit Socket(37L):PZ1-PZ2-PZ3
- 6-Torx Bit Socket(37L):T10-T15-T20-T25-T30-T40
- 1-Sliding Bar 115L
- 1-Universal Joint
- 2-Extension Bar: 50MM&100MM



ST-9266

1/2" DR. 6PT 27PCS SOCKET WRENCH SET

- 20-6PT Socket:8-9-10-11-12-13-14-15-16-17-18-19-20-21-22-23-24-27-30-32MM
- 1-Sliding T-bar
- 1-Universal Joint
- 2-Extension Bar: 125MM&250MM
- 2-Spark Plug Sockets:16MM&21MM
- 1-Ratchet Handle



ST-9267

1/4" & 1/2" DR. 6PT 58PCS SOCKET WRENCH SET

- | | |
|--|---|
| 1/4" | 1/2" |
| 9-Socket:4-5-5.5-6-7-8-9-10MM | 12-6PT Socket:10-11-12-13-14-15-17-19-22-24-30-32MM |
| 2-PH Bit Socket(37L):PH1-PH2 | 3-6PT Deep Socket:12-13-17MM |
| 2-SL Bit Socket(37L):SL4-SL5.5 | 3-Hex Bit Socket(100L):H7-H8-H10 |
| 3-Hex Bit Socket(37L):H4-H5-H6 | 5-Bits Socket(55I):PH3-SL8-T40-T45-T50 |
| 4-Torx Bit Socket(37L):T10-T20-T25-T30 | 2-Spark Plug Sockets:16MM&21MM |
| 2-Extension Bar: 125MM&250MM | 1-Sliding Bar 250L |
| 1-Ratchet Handle | 1-Ratchet Handle |
| 1-Spinner Handle | 1-Universal Joint |
| 1-Universal Joint | 2-Extension Bar: 125MM&250MM |
| 4-Hex Key Wrench:1.27-1.5-2-2.5MM | |

ST-9268

1/4" & 1/2" 101PCS SOCKET WRENCH SET

- 1/4"
 - 2-Extension Bar: 2"&6"
 - 1-Ratchet Handle
 - 1-Universal Joint
 - 12-Socket:4-4.5-5-5.5-6-7-8-9-10-11-12-13MM
 - 1-Socket Pick-Up
- 1/2"
 - 1-Ratchet Handle
 - 3-Extension Bar: 3"&5"&10"
 - 1-Universal Joint
 - 20-Socket:10-12-14-15-16-17-18-19-20-21-22-23-24-25-26-27-28-29-30-32MM
 - 8- Deep Socket:12-14-15-16-17-18-19-21MM
 - 11-Combination Wrenches:6-8-9-10-11-12-13-15-17-19-22MM
 - 5-Screwdriver:SL 1.0*5.5*75-SL 1.2*6.5*100-PH0-75-PH1*80-PH2*100
 - 1-Spinner Handle
 - 10-1/4" 25L Bit: 2- H5-H6 10-1/4" 25L Bit: 4 -PZ0-PZ1-PZ2-PZ3
 4 -PH0-PH1-PH2-PH3 4-SL3-SL4-SL5-SL6
 4-TT10-TT15-TT20-TT25 2- H3-H4
 - 10-1/4" 25L Bit: 3-TT27-TT30-TT40
 7-T10-T15-T20-T25-T27-T30-T40
 - 5-Socket: 5*34MM-6*36MM-8*36MM-10*38.5MM-11*38.5MM



ST-9269

1/4" 34PCS SOCKET WRENCH SET

- 1-Ratchet Handle
- 2-Extension Bar: 2"&4"
- 1-Sliding bar 110L
- 1-Universal Joint
- 12-6PT Socket:4-4.5-5-5.5-6-7-8-9-10-11-12-13MM
- 5-Hex Bit Socket(37L):H3-H4-H5-H6-H8
- 5-Torx Bit Socket(37L):T10-T15-T20-T25-T30
- 2-PZ Bit Socket(37L):PZ1-PZ2
- 2-PH Bit Socket(37L):PH1-PH2
- 3-SL Bit Socket(37L):SL4-SL5-SL6



ST-9270

1/4" & 1/2" DR. 6PT 48PCS SOCKET WRENCH SET

- 1/4"
 - 1-Ratchet Handle
 - 2-Extension Bar: 2"&4"
 - 1-Universal Joint
 - 12-6PT Socket:4-4.5-5-5.5-6-7-8-9-10-11-12-13MM
 - 1-Socket Pick-Up
- 1/2"
 - 1-Ratchet Handle
 - 1-Extension Bar: 5"
 - 1-Universal Joint
 - 18-6PT Socket:10-11-12-13-14-15-16-17-18-19-20-21-22-23-24-27-30-32MM
 - 10-1/4" 25L Bit:
 - 3-HEX3/16-HEX7/32-HEX1/4
 - 2-PH1-PH2
 - 2-T10-T15
 - 3-SL1/8-SL3/16-SL1/4



01-9092

PORTABLE FUEL TANK

- To use this simple contraption, just remove the fuel tank from your machine using the procedure outlined in your service manual.
- Then, connect the fuel lines that are included with the Auxiliary Fuel Tank to your carburetors or fuel pumps, close the included petcock, add up to 7 gallon of fuel to the tank, and hang it above the bike, clear of any heat sources.
- Then, simply turn the petcock to the "on" position and start the bike just like normal.
- For fuel injected engines, it has a built-on return line and breather required for electronic fuel delivery systems.



01-9096

12V PRESSURE BRAKE FLUID BLEEDER

- With european and universal adaptors
- Suitable for clutch bleed as well as brake bleed
- 5 litre capacity tank



01-9064

9.5L LITER IN LINE FILLING SET

- Manual operated pump to fill seal transmission system
- Standard and optional adaptors cover all CVT and DSG design
- Pump stroke to minimize leakage when reaching overflow point
- Fluid control valve to shut off dispensing immediately
- Large transparent tank to see through fluid level





TS-9118

AIRVAC COOLANT REFILLER

- Purges trapped air from cooling system to eliminate the possibility of engine damage due to overheating
- Performs vacuum leak test on cooling system
- Refills cooling system free of trapped air quickly, efficiently and with no mess
- Universal rubber body plus for additional busings covers most vehicle radiators
- Muffler dampens noise output during operation



TS-9107

UNIVERSAL RADIATOR TESTER WITH EXPANDABLE ADAPTORS

- Universal design to fit on most radiator neck
- No need for additional costly adaptors
- Metal sturdy design to ensure long lasting usage



TS-9113

PETROL & DIESEL ENGINE COMPRESSION AND LEAKAGE TEST KIT

- This petrol & diesel engine compression and cylinder leakage test kits that cover the wide range of modern engines, including Hdi, TDCi and pump duse.
- Included clamp-on injector adaptors, 0-60 Bar (800 PSI) gaug with rubber bumper, straight and right angled quick connect fitting and an extensive range of glow plug and injector adaptors enable this kit to cover the vast majority of car, van, truck, and bus, agricultural and marine diesel engines.
- Additional pressure gauge for references on incoming pressure during the operation (0-7 Bar).
- Glow Plug Adaptors: Wide range of Alfa, BMW, Chrysler, Daewoo, Fiat, Ford, Hyundai, Izusu, Land Rover, LDV, Mazda, Mercedes, Mitsubishi, Nissan, Opel, PSA, Renault, Saab, Suzuki, Toyota, VAG, Vauxhall, Volvo diesel engines.
- Sizes of Spark Plug : 10 , 12 , 14 , 18mm.
- Injectors: M20, M22, M24 & Ford Stanadyne injector plus clamp-on injector.



TS-9121

12PCS LOCKING NUT SET FOR DIESEL COMPONENTS

- Due to the design with steel sealing cone suitable for various universal pressure tests
- Also suitable for just sealing against pollution
- The set consists of 6 caps each M 12x1.50 and M 14x1.50 with internal thread and sealing cone

TS-9112

SMOKE LEAKAGE TESTER

- Allows the technician to pinpoint all manner of system leaks including air intake, cooling, evaporation, fuel, exhaust and vacuum systems.
- Fast and simple to use, maximizing earning potential.
- Features single button operation, flow control and auto power-off.



TS-9115

TS-9115 BRAKE FLUID TESTER- FOR DOT3,DOT4,DOT5.1



- The tester can be used as a digital brake fluid tester suitable for determining brake fluid quality.
- Developed for professional use in automotive repair shops and in servicing.
- Quality it tested and indicated on five LEDs in terms of per cant of water in the brale fluid

TS-9116

TS-9116 PROFESSIONAL BRAKE FLUID TESTER- FOR 8 BRANDS



Brake Fluid	Item No.	TS-9115	TS-9116
DOT 3		✓	✓
DOT 4		✓	✓
DOT 5.1		✓	✓
AC Delco DOT 3			✓
PENNZOIL DOT 3			✓
PRESTONE DOT 3			✓
MOTORCRAFT DOT 3			✓
TOYOTA DOT 3			✓
LED illumination			✓

BE-9049

INFRARED THERMOMETER

- Accuracy: +/- 2% above 32° F, +/- 4.5% below 31° F
- Battery(s) Included (y/n) No
- Battery(s) required 2 AAA
- Temperature range (deg F) -36.4° F / -38° C to +968° F / +520° C
- Product Height 2-7/8 in.
- Product Length 6-7/8 in.
- Product Weight 0.35 lbs.
- Product Width 1-3/8 in.
- Shipping Weight 0.45 lb.



EXAMPLE DISPLAY



GT-9324

STACKING ORGANIZER TOOL BOX SET



GT-9324-1

TRANSPARENT STACKING ORGANIZER TOOL BOX



GT-9324-2

ORANGE STACKING ORGANIZER TOOL BOX



GT-9335

PORTABLE JUMPSTARTER

- 17AH Sealed lead-acid batteries
- Starting current:12V-400AMP
- Peak current:12V-900AMP
- Internal battery status:LED Display
- Extra Bright work light(3*LED)
- Charging:fully automatic/float,CEC & cETLus
- 2*12V power outlet in front panel
- 5V 2.1A USB port for Ipad,cell phone or MP3 player
- 6GA 42"CCA Cable
- Low voltage alert
- Reverse Indicator
- On/off switch to keep safety



GT-9336

POWER JUMPSTARTER WITH AIR COMPRESSOR

- 17AH Sealed lead-acid batteries
- Starting current:12V-400AMPB
- Peak current:12V-900AMP
- Internal battery status:LED Display
- Extra Bright work light(3*LED)
- Charging:fully automatic/float,CEC & cETLus
- 2*12V power outlet in front panel
- 5V 2.1A USB port for iPad,cell phone or MP3 player
- 6GA 42"CCA Cable
- Low voltage alert
- Reverse Indicator
- On/off switch to keep safety
- 250PSI Air Compressor
- Over mold handle



GT-9284

ECONOMIC PARTS WASHER

- Designed to fit most 5 gallon and buckets.
- Tapered basin with cord and hose channels allow a snug fit.
- Self-contained 4.5 gallon/minute submersible pump for strong, continuous cleaning power.



GT-9325

200W MODIFIED SINE WAVE POWER INVERTER

- DC 12V, AC 220V, 50Hz, Aluminum main housing and iron front and rear panel, with DC connect cable



GT-9326

400W MODIFIED SINE WAVE POWER INVERTER

- DC 12V, AC 220V, 50Hz, Aluminum main housing and iron front and rear panel, with DC clip cable, With cigarette plug cable



GT-9332

2000W MODIFIED SINE WAVE POWER INVERTER

- DC 12V, AC 220V, 50Hz, Aluminum main housing and iron front and rear panel, Without cable



GT-9334

3000W MODIFIED SINE WAVE POWER INVERTER

- DC 12V, AC 220V, 50Hz, Aluminum main housing and iron front and rear panel, Without cable





BR-9051

2 & 3 PIN BRAKE PISTON REWIND BACK TOOL

- Flexible Hose Clamp
- 2 & 3 Pin Brake Piston Adapters
- Brake Pedal & Throttle Pedal Depressor



BR-9063

BRAKE DISC MEASURING TOOL SET

- Gauge stand with 3-point connection for the assembly of the bumper
- Ideal for identifying of vertical and lateral wobble on the brake disk
- Transverse arm with joint and fine adjustment
- Includes dial gauge and micrometre for identifying wear limit
- Universal usage
- Simple handling



BR-9053

12PCS GUIDE BOLT REPAIR SET

- Material: HSS W/Steel M10x1.25
- The tool set is used for repairing faulty inner threads for brake guide bolts in wheel bearing housings / brake calliper carriers. This often helps to avoid customer complaints about high costs caused by wheel bearing replacement. There is no longer any need to remove the wheel bearing and strut and then align axles either.
- Application:
Drill open the faulty thread M9 x 1.25 and install a new thread of M10 x 1.25 using the thread tap. The guide bolts included can now be screwed directly into the new thread
- Used for VW, Audi, Seat, Skoda, Ford, Opel



BR-9050

VERNIER CALIPER FOR BRAKE DISC

- Universally suitable.
- Designed to measure the diameter of brake discs without the need for removing the wheels from the vehicle.
- Allows for quick identification of the brake system
- Helps to eliminate the risk of ordering wrong brake pads or brake discs
- Reduces number of returns
- Allows professional and cost-effective brake-servicing work to be carried out
- Saves a lot of time.



BR-9044

7PCS SPEEDY BRAKE CALIPER TOOL

- Time saving because you never again have to search for a suitable driver
- Speedy ways for you to drive your adaptor
- Easy to use;



BR-9044-3P

3PCS BRAKE CALIPER SET

- An essential set of Brake Caliper Rewind Tools that fits more than 1500 different car models from Audi, BMW, Iveco, Renault, Range Rover, Seat, Volkswagen, Volvo, Ford, Fiat, etc.



OF-9051-2P

2PCS 1/2"Dr. 24MM OIL FILTER WRENCH FOR DSG GEAR OIL CHANG- 140L & 101L SET

- For operation of the oil filter housing cover during changing the oil filter insert on the DSG gearbox with VW and group vehicles.
- Without removal of batteries or battery holders.



OF-9050

EZ OIL FILTER WRENCH 30-150MM

- Quick and Easy Release Mechanism
- Fast Ratchet Action
- The Strap Torque Control Offers The Optimum Ratchet Effect
- Remover Strap 30-150mm

MEMO

A series of horizontal dashed lines for writing, spanning the width of the page.





MEMO

A series of horizontal dashed lines for writing, spanning the width of the page.





kaupa



KAUPA INTERNATIONAL CO., LTD.

No. 2-7, Ln. 108 West, Yongfong Rd.,
Taiping Dist., Taichung City 411, Taiwan
TEL: 886-4-2277-8689 FAX: 886-4-2277-8289
E-mail: service@kaupa.com.tw
www.kaupa.com.tw