

KAUPA MONTHLY (APRIL/2020) BROCHURE- PRODUCT INDEX

PAGE1:

TT-9274 PETROL 2.0 T (CHAIN) ENGINE SETTING / LOCKING KIT-OPEL/VAUXHALL - SAAB

TT-9233 BMW BELT INSTALLATION TOOL N62

PC-9340 47PC SHOCK ABSORBER PISTON ROD TOOL SET-FOR SPRING COMPRESSOR & WISHBONE SUSPENSION < HOT PRODUCT >

AC-9012 AIR CONDITIONING / FUEL LINE DISCONNECT TOOL SET

PC-9342 CLAMPING SCREW DISASSEMBLY TOOL < HOT PRODUCT >

PAGE2:

ET-9330-1 TEFLON OIL SEAL TOOL

ET-9331 PRECHAMBER RING SOCKET

ET-9332 DIESEL PUMP ADJUSTMENT TOOL

ET-9333 SOCKET, SPANNER, STEERING RACK

ET-9334 VAG SPECIAL TOOL PIPE WRENCH FOR DAMPER CARTRIDGE

PAGE3: < HOT PRODUCT >

ET-9341 FLYWHEEL LOCKING TOOL FOR BMW/MINI

ET-9342 BMW PETROL INJECTOR EXTRACTOR

ET-9343 FUEL LINE CONNECTOR TOOL

ET-9345 OPEN TYPE STEERING KUNCKLE SPREADER TOOL

PAGE4:

ET-9346 14PCS SLOTTED SPECIAL SOCKET SET

ET-9347 3/8 DRIVE SOCKET, METRIC, FUEL INJECTOR LINE, CUMMINS ISB ENGINES, 19MM & 22MM

ET-9348 10PCS OXYGEN SENSOR SOCKET SET

BR-9089 AIR LINE DISCONNECT PLIERS

PAGE5: < HOT PRODUCT >

PC-9326 FORD WATER PUMP PULLEY TOOL

PC-9327 UNIVERSAL PULLER SET FOR WHEEL BEARING CAGE PAT.

OF-9067 UNIVERSAL BRAKE FILLING ADAPTER

OF-9068 ADJUSTABLE FUEL CAP REMOVER

OF-9069 OIL FILTER SOCKET MERCEDES

PAGE6:

- PC-9335 SPRING TOOL FOR STEERING LOCK PROTECTION SLEEVE 2PCS
- PC-9336 NEEDLE SET FOR TAIL GATE LOCK
- PC-9337 REAR OIL SEAL INSTALLER SET
- PC-9338 3/8" SPECIAL SHOCK ABSORBER RELEASE TOOL FOR MERCEDES V CLASSES,
18MM
- PC-9339 LOCKING SCREW SET

PAGE7: < HOT PRODUCT >

- SB-9306 15PCS SCREW NUT EXTRACTOR
- SB-9307 8PCS INSULATED OPEN END WRENCH SET
- SB-9308 9PCS 3/8" INSULATED TOOL SET
- SB-9309 28PCS INSULATED TOOL SET
- SB-9312 METRIC SOCKET WRENCH INSERT SET (NON-MARRING)



www.kaupa.com.tw

TT-9274

PETROL 2.0 T (CHAIN) ENGINE SETTING / LOCKING KIT-OPEL/VAUXHALL - SAAB

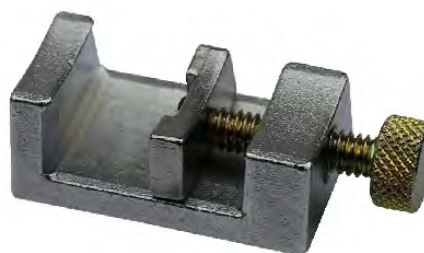
• Application:

- * OPEL-VAUXHALL:
- * Signum
- * Vectra-C
- * SAAB:
- * 9-3 (9440)
- * 2.0T Petrol engines:
- * B207
- * B207E
- * B207L
- * B207R
- * Z20NET



TT-9233

BMW BELT INSTALLATION TOOL N62



- Used for installing the drive belt that is a stretch belt and no belt tensioner is used.
- Applicable : BMW N62 (V8) engine with the stretch belt (2004 ~ 2006).
- Comparable : BMW #641040 & #83800494518.

PC-9340

47PC SHOCK ABSORBER PISTON ROD TOOL SET-FOR SPRING COMPRESSOR & WISHBONE SUSPENSION



AC-9012

AIR CONDITIONING / FUEL LINE DISCONNECT TOOL SET



- Works on air conditioning line, fuel line, etc.
- Easily disconnects quick connect couplings on many vehicles.
- Color-coded products provide easy identification of different sizes.
- Six sizes : 5/16", 3/8", 1/2", 5/8", 3/4", 7/8"

PC-9342

CLAMPING SCREW DISASSEMBLY TOOL



- Special tool for loosening the clamping screw on the four-link axle
- For VAG vehicles, z. B. AUDI A4, A6 etc.
- Can also be used with aluminum steering knuckles
- Content:
- 3 high performance drills (HSS Cobalt), size: 6 8,5 10 mm
- 1 pressure bar
- 1 rash tool

KAUPA INTERNATIONAL CO.,LTD

E-mail: service@kaupa.com.tw



Android



IOS





www.kaupa.com.tw

ET-9330-1

TEFLON OIL SEAL TOOL



- For damage-free and professional assembly and disassembly of Simmer rings and shaft seals.
- For precise use on motor shafts such as crankshaft, camshaft or intermediate shaft universally applicable for radial sealing rings in the diameters from 23.0 to 35.0 mm.

ET-9331

PRECHAMBER RING SOCKET



- For the proper R&R of threaded ring which secures pre-chamber in cylinder head. Applicable on engine type - OM 615, OM 616, OM 617. 91 / 93/ 95.

ET-9332

DIESEL PUMP ADJUSTMENT TOOL



- Secure stand for the pump wheel when assembling and disassembling the high pressure pump exact positioning of the pump wheel
- No need to disassemble the tooth belt
- Saves work of making further adjustments to the pump
- Application range: Diesel engines F9Q for Opel, Renault, and Nissan vehicles

ET-9333

SOCKET, SPANNER, STEERING RACK



- Removes & installs cylinder end stopper on '04 - '09 Lexus RX330 & RX350, plus '04 - '07 Toyota Highlander
- Allows steering rack to remain in vehicle without using a screwdriver or hammer, preventing damage
- Use with 3/8" square drive tools

ET-9334

VAG SPECIAL TOOL PIPE WRENCH FOR DAMPER CARTRIDGE



- Mounting the damper cartridge Front for Audi 100 , Audi 200 and A6 C4 models.
- For opening and closing the cap nut on the strut.
- Drive 1/2 "square drive.

KAUPA INTERNATIONAL CO.,LTD

E-mail: service@kaupa.com.tw



Android



IOS



ET-9341

FLYWHEEL LOCKING TOOL FOR BMW/MINI



- To hold the flywheel for removal and installation.
- Suitable for engine : N40, N42, N43, N45(T), N46(T), N51,N52, N53, N54, N62, N73, M47TU, M54, M57T2(TU), S85, W17.

ET-9343

FUEL LINE CONNECTOR TOOL



- Material: S45C
- Suitable for VW-Audi, Sear and Skoda 2.0,2.7 and 3.0 TDI Common Rail Diesel engine; as fitted to VWEos, golfV, GolfVI, Jetta, Passat, PassatCC, Scirocco, Tiguan, Transporter T5, Phaeton; Audi A3, A4, A5, A6, A7, Q5; Seat Exeo; Skoda Yeti etc. (Engine code; BMK, BPP, CAAA, CAAB, CAAC, CAAD, CAAE, CAGA, CAGB, CAGC, CBAB, CBAC, CBDA, CBDB, CBDC, CDUD)
- Design to professionally disconnect/loosen as well as mount/lock the fuel return line push-fit connector (round design) at the injectors. An indispensable tool when removing fuel return line push-fit connectors. Incorrect loosening
- May damage the connector resulting in the complete fuel return line in the engine compartment to be replaced.

ET-9342

BMW PETROL INJECTOR EXTRACTOR

- Petrol injector extractor with slide hammer
- Applications: BMW N43 (1.6/2.0lt), N53/N54 (2.5/3.0lt) Petrol engines
- Equivalent to OEM 13 0 180
- Where possible run engine prior to injector removal till the engine block is warm to the touch.
- Designed to be used in accordance with OEM instructions



ET-9345

OPEN TYPE STEERING KUNCKLE SPREADER TOOL



- Made of chrome-moly steel.
- Adjustable tool designed for spreading the steering fixed seat of shock absorbers without damaging the aluminum or cast iron knuckle.
- Applicable: VAG, BMW, Citroen, FORD, Renault, Seat, Peugeot and most Japanese vehicles.





www.kaupa.com.tw

ET-9346

14PCS SLOTTED SPECIAL SOCKET SET



- Slotted sockets in 3/8"DR(10, 11, 12mm)x 6PT x 46mm, 3/8"DR(13, 14, 15, 16mm) x 6PT x 64mm, and 1/2"DR(17, 18, 19, 20, 21, 22, 24mm) x 6PT x 78mmL
- For the assembly of top and side wired temperature sensors, thermo switches and other components
- Also suitable for nuts and bolts of bent pipes
- The slot width is: 7.4 mm(10), 8.8 mm(11), 9.1mm(12), 10.5 mm(13), 11 mm(14), 11 mm(15), 12.3 mm(16) 13.8 mm(17), 14 mm(18) 14.4mm(19), 14.4 mm(20), 15.7 mm(21), 15.7 mm(22) and 16.9 mm(24)

ET-9347

3/8 DRIVE SOCKET, METRIC, FUEL INJECTOR LINE, CUMMINS ISB ENGINES, 19MM & 22MM



- Designed to easily torque the fuel injector lines correctly, reducing if not eliminating the possibility of a fuel leak or damaging the line, fuel rail or fittings
- Easily applies the factory required torque of 30 ft-lb
- No torque adaptors with complicated calculations required
- Use on Cummins ISB engines 1998 to present
- 19mm & 22mm, 3/8" drive

ET-9348

10PCS OXYGEN SENSOR SOCKET SET



- Rethread tool sizes: M12x1.25mm and M18 x 1.5mm
- Vacuum Switch socket sizes: 1/2" drive 29mm and 3/8"
- Oil sender unit socket sizes: 1" and 1 1/16"
- Injector socket size: 1/2" drive 27mm
- Heated oxygen sensor socket size: 1/2" drive 22mm
- Offset oxygen sensor wrench size: 3/8" drive 22mm
- Deep offset oxygen sensor socket size: 1/2" drive 22mm

BR-9089

AIR LINE DISCONNECT PLIERS



- Disconnects the air line quick connector on heavy-duty vehicle air brake system.
- Easy loosening of air lines with diameters 6, 8, 10, 12 mm.
- Ideal for the straight air line quick connector.

KAUPA INTERNATIONAL CO.,LTD

E-mail: service@kaupa.com.tw



Android



IOS





www.kaupa.com.tw

PC-9326

FORD WATER PUMP PULLEY TOOL



PC-9327

UNIVERSAL PULLER SET FOR WHEEL BEARING CAGE



- 3 Arm design for better Gripping under the samllest work column, and evenly of consistent force apply to gripping the bearing ring.
- To turn the spindle to engaged bearing shell and remove it safely.
- Delivery: puller arms and spindle clamp chain wrench SW6
- Technical data:
- Spindle Length: 200 mm
- Spindle M20 * 1.5
- Pressure mushroom Ø :34mm anfgesteckt secured with o-ring
- Arm width: 27mm
- Off length: 98mm
- Weight: 2642g
- Use range : Ø50~Ø120

OF-9067

UNIVERSAL BRAKE FILLING ADAPTER



- Brake refilling adapter with a 90° rotating coupling fits almost all vehicles on the market.
- Fits master cylinder fill neck between Ø28-70 mm (1.10"-2.75")
- Maximum pressure up to 3.5 bar (50 psi).

OF-9068

ADJUSTABLE FUEL CAP REMOVER



- Material: S45C Steel
- SIZE: 109-183mm
- Feature: Universal suitable for use on fuel tank sender lock ring as found on : VW-Audi, Seat, Skoda, BMW, Mercedes-Benz, Porsche, Opel/Vauxhall, Mini, PSA, Citroen, Peugeot, Renault, Alfa Romeo, Fiat, Volvo and Honda etc.

OF-9069

C TYPE CLAMP 6"



- Used for the oil filter (housing) with 84 mm / 14 flats.
- Also for Dodge / Jeep / Chrysler with 3.0L V6 diesel engine.

KAUPA INTERNATIONAL CO.,LTD

E-mail: service@kaupa.com.tw



Android



IOS





www.kaupa.com.tw

PC-9335

SPRING TOOL FOR STEERING
LOCK PROTECTION SLEEVE 2PCS



- For Mercedes W129, W140, W210 and W202 with FBS2 Ignition Switch

PC-9336

NEEDLE SET FOR TAIL GATE
LOCK



- Suitable for Mercedes C-Class (W203) Tail gate lock.

PC-9337

REAR OIL SEAL INSTALLER SET



- This tool is made of plastic.
- Applications: Gen III 4.8L, 5.3L, 5.7L, 6.0L, 6.2L and more
- Supercharged 6.2L V8s will have a 9-bolt rear crankshaft flange due to their performance output.

PC-9338

3/8" SPECIAL SHOCK ABSORBER RELEASE TOOL
FOR MERCEDES V CLASSES, 18MM



- For the assembly and disassembly of shock absorbers on V class vehicles
 - Extra long
 - With 21 mm operation for opening the cap nut
 - 7 mm internal square for securing the piston rod
 - External drive hexagonal socket 18.0 mm
 - Simple handling
- Application range: Mercedes Type 639 (Viano and Vito)

PC-9339

LOCKING SCREW SET



- With conical tip for middle positioning of the steering while adjusting the steering geometry.
- Size: M8×1.0, M10×1.5, M12×1.5, Suitable for Mercedes W107, W114, W115, W116, W123, W126.
- Move the steering rack until Pos. 1 and Pos. 2 are level. Then, screw in the locking screw. The rack is now in the centre position so that it is possible to carry out the track basic adjustment of the right-hand and left-hand steering rod.
- Size M8×1.25, Suitable for Audi A4, A6, VW Passat from 1997 onwards etc.

KAUPA INTERNATIONAL CO.,LTD

E-mail: service@kaupa.com.tw



Android



IOS





www.kaupa.com.tw

SB-9306

15PCS SCREW NUT EXTRACTOR



- 12mm hex: 3mm, 1/8", 4mm, 3/16", 5mm, 5.5mm, 6mm, 1/4", 8mm, 3/8", 10mm
- 16mm hex: 11mm, 12mm, 1/2", 14mm
- Set for removing a broken stud or internal hex bolt by drilling a hole.
- Product NOT designed for air/impact wrench operation.

SB-9307

8PCS INSULATED OPEN END WRENCH SET



- 7-OPEN END WRENCH:8.10.12.13.14.17.19MM

SB-9308

9PCS 3/8" INSULATED TOOL SET



- 7-3/8"DR. SOCKETS:8.10.12.13.14.17.19MM
- 1- 3/8" RATCHET
- 1- 3/8" X 100MM EXTENSION

SB-9309

28PCS INSULATED TOOL SET



- 1- 3/8"DR. REVERSIBLE RATCHET
- 1- EXTENSIONS:100MM L
- 1-3/8"DR.T-HANDLE
- 9- 3/8"DR. SOCKETS : 7, 8, 10, 12,13,14, 17, 19,22MM
- 8-OPEN END WRENCH:7.8.10.12.13.14.17.19MM
- 1-CABLE KNIFE
- 2-PLIERS: 8"COMBINATION PLIER POLISH,6"DIAGONAL PLIER POLISH
- 4-SCREWDRIVERS:PH1*100MM , PH2*100MM,SL1.0*5.5*125MM, SL0.8*4.0*100MM

SB-9312

METRIC SOCKET WRENCH INSERT SET (NON-MARRING)



- General automotive use, decorative polished engine components, rims, door thresholds, motorcycles, boats / marine, trucks, bezels, grips / handles, step rails, exhaust / stack components, bumpers, gear shift plates, air cleaner canister, front grill and manufacturing equipment.

Fastener	Socket	Torque
8 mm	12 mm	9 Nm
10 mm	14 mm	17 Nm
12 mm	16 mm	27 Nm
13 mm	17 mm	45 Nm
15 mm	19 mm	50 Nm
17 mm	22 mm	79 Nm

KAUPA INTERNATIONAL CO.,LTD

E-mail: service@kaupa.com.tw



Android



IOS

