



www.kaupa.com.tw

## GT-9504

### 12W CORDLESS SOLDERING IRON WITH RECHARGEABLE LITHIUM-ION BATTERY

- Cordless and lightweight
- Durable anti-slip rubber grips on handle
- Inbuilt LED light to illuminate soldering area
- Inbuilt safety switch and cap for safety switch
- Multiple tips available for different works and jobs
- Ideal for heavy duty soldering works such as copper plate or solid copper wire connection, stained glass projects
- Electronics market and auto-repair market



## GT-9510

### TRAILER CONNECTOR REMOVAL TOOL KIT KNORR-BREMSE

- Fast releasing of all electronic connectors on trailer modules. ( power supply, wheels speed sensors, additional functions )
- EBS Module
- Narrow surrounding and limited space.
- Working overhead under the Trailer.



## GT-9516

### TIRE REPAIR SET



- If you ride a motorcycle get this tire repair kit that will allow you to repair the puncture quickly and effectively and you should be back on the road within minutes.
- Sharp jaw design, easy to cut black tire repair rubber strip, very convenient.
- These tire removal pliers are designed to quickly remove sharp objects. such as iron nails, bamboo sticks, etc.
- Easy to use:
  - Remove the object that you puncture.
  - Slide the grater into the hole to roughen and clean the edges.
  - Then place in the hole of the needle with the rubber cement and slide in and out of the hole.
  - Place a strip of tire repair adhesive to seal the needle.
- 1 Pack(5 strips) of tire repair glue.
- 1 PC T-Handle split eye tool.
- 1 PC T-Handle rasp tool.
- 1 PC Removal/trim plastic rivets buckle clamp pliers.



E-mail: service@kaupa.com.tw

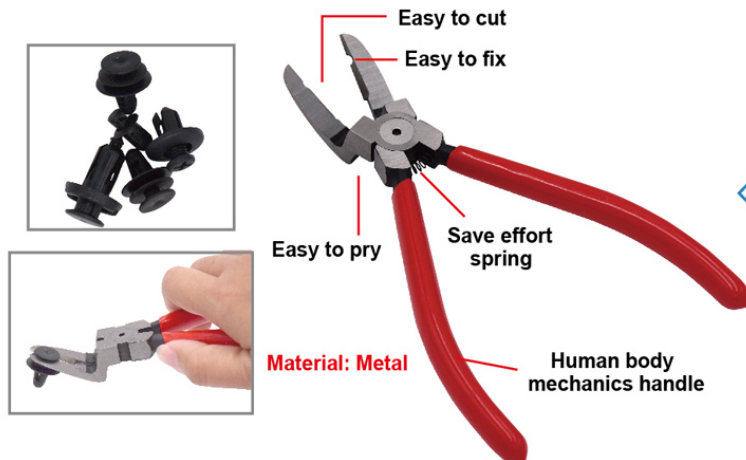
KAUPA INTERNATIONAL CO.,LTD



www.kaupa.com.tw

## PLC-9065

### REMOVAL/TRIM PLASTIC RIVETS BUCKLE CLAMP PLIERS

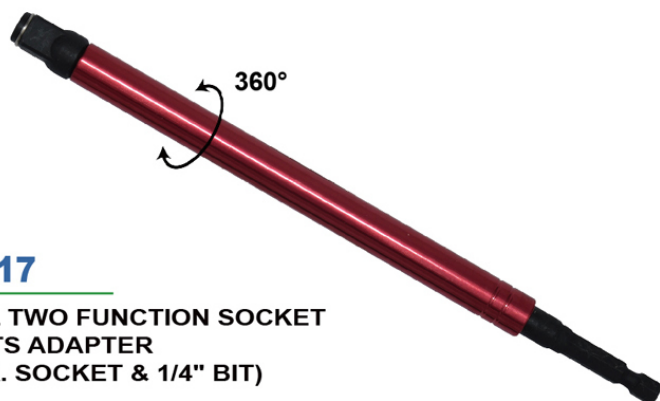
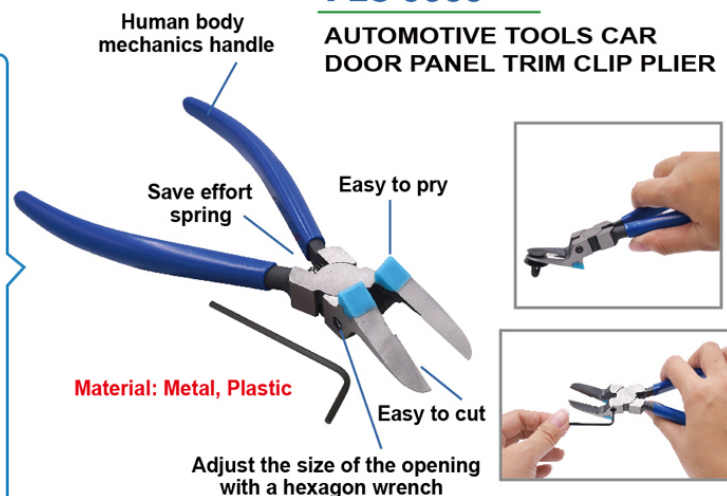


#### Features:

- Durable spring design, there is a good buffer effect, very effortless.
- Sharp jaw design, easy to cut the car plastic buckle, very convenient.
- The jaw design allows clip removal simply by squeezing the handles and the wide nose is designed to prevent breaking or tearing panels when undoing facings.
- These car door panel and trim clip removal pliers are designed for the quick removal of staples, clips, door panels, facia and trim supports etc. without damage.

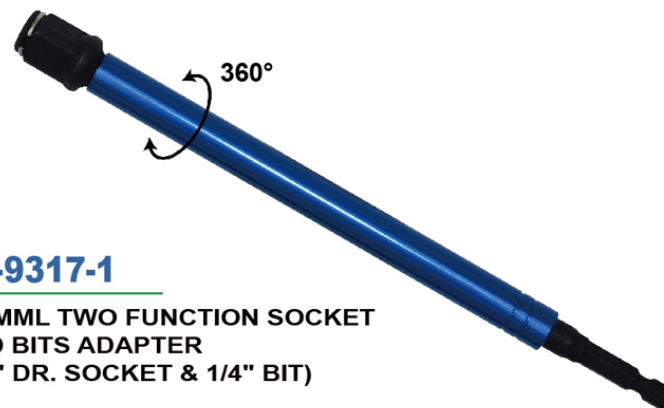
## PLC-9066

### AUTOMOTIVE TOOLS CAR DOOR PANEL TRIM CLIP PLIER



## SB-9317

### 200MML TWO FUNCTION SOCKET AND BITS ADAPTER (3/8" DR. SOCKET & 1/4" BIT)



## SB-9317-1

### 200MML TWO FUNCTION SOCKET AND BITS ADAPTER (1/2" DR. SOCKET & 1/4" BIT)



E-mail: service@kaupa.com.tw

KAUPA INTERNATIONAL CO.,LTD





www.kaupa.com.tw

# ANTI-SLIP SOCKET SET

**ST-9443~9446  
SERIES**



## ST-9443

1/4" DR. 30PCS 6PT ANTI-SLIP TYPE  
SOCKET SET

- 13 X 6PT Anti-Slip Socket: 4,4.5,5,5.5,6,7,8,9,10,11,12,13,14MM
- 10 X Bits Set\*2
- 1 X Ratchet Handle
- 1 X Slide T-Handle
- 1 X Universal Joint
- 2 X Extension Bar (2" +3 ")
- 1 X Spinner Handle
- 1 X Coupler

• The patented hexagon socket is designed to evenly disperse the contact surface of the impact force and reduce to damage the nut.

• In a regular hexagon socket design, the angles apply too much impact force caused the nut service life to be reduced.

• 85% rounded nut: the impact force is on the socket angle to the nut angle. If the nut angle is damaged, the hexagon socket couldn't grip on the damaged nut and couldn't spin it.

• Even every angle of the nut damaged, it could be used the patented hexagon socket to grip on the damaged nut and spin it.

## ST-9445

1/4" DR 10PCS- 8,10,12,13,14,17,19,21,22,24MM



**Works on up to  
85% rounded nut**



**Anti-Slip  
Feature For All**

## ST-9444

SIZE: 17,19,21MM



## ST-9446

1/4" DR 12PCS- 12,13,14,15,16,17,18,19,21,22,24,27MM



E-mail: service@kaupa.com.tw

**KAUPA INTERNATIONAL CO.,LTD**



www.kaupa.com.tw

## WR-9349

12PCS 90T FLEX. RATCHETING WRENCH SET METRIC  
SIZE:8, 9, 10, 11, 12, 13, 14, 15, 16, 17, 18, 19 MM

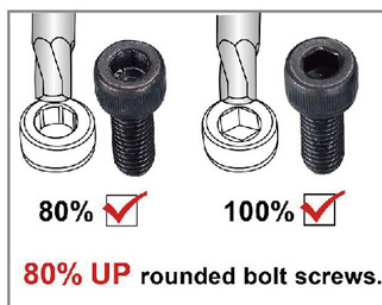
SIZE DETAIL AS BELOW:

WR-9349-8	8MM X 140L
WR-9349-9	9MM X 145L
WR-9349-10	10MM X 160L
WR-9349-11	11MM X 165L
WR-9349-12	12MM X 176L
WR-9349-13	13MM X 178L
WR-9349-14	14MM X 187L
WR-9349-15	15MM X 192L
WR-9349-16	16MM X 208L
WR-9349-17	17MM X 222L
WR-9349-18	18MM X 230L
WR-9349-19	19MM X 239L



## SB-9311

9PC ROTATE L KEY WRENCH-  
1.5,2.0,2.5,3,4,5,6,8,10MM  
(ANSI)



KAUPA  
APP



Android



IOS



E-mail: service@kaupa.com.tw

KAUPA INTERNATIONAL CO.,LTD