

ARW-9916

AIR SUCTION BLOW GUN KIT



SPECIFICATION:

- Weight : 0.67 kgs
- Length: 145 mm (Gun body)
- Ave. Air Consumption: 3.36 CFM
- Min. Hose Size: 5/16 "

FEATURES:

1. Hi-performance ergonomic vacuum tube & brush to provide excellent function of vacuum and meet environmental protection needed. Even tiny dust as fine powder also could be cleaned clear.
2. Durable aluminum Gun body with vacuum/blow two-way function, light-weighted design, easy for operation.
3. This system includes a 12" long rear hose & an extension tube.
4. Three optional different tubes are included :
 - a. Flat tube : for small space of car engine cleaning.
 - b. Small -bore vacuum tube : for cleaning at any small space.
 - c. Brush : Multi-angle brush provides brush cleaning & vacuum two-way function.
5. This system provides excellent function for different material cleaning as sand, iron chips, sawdust , stones & glasses chips.
6. Dust bag with two layers of cloth, not easy to be broken by glasses .Zipper lock end design for easy to throw away iron chips
7. With clamping ring to fix the connector tightly.
8. Suitable for car seat, engine room and cabinet cleaning. Easy for operation.

ARW-9917

ONE-TOUCH AIR SUCTION BLOW GUN KIT



One touch vacuum /
Blow knob(patent)

SPECIFICATION:

- Gun body Weight : 0.8kgs
- Length: 145 mm (Gun body)
- Ave. Air Consumption: 3.5 CFM (96 L/min)
- Air Pressure (PSI) 90-15
- Air Inlet (NPT, PT) 1/4
- Sound Level : 92 dB(A)
- Sound Power Level: 97 dB(A)
- Suction: 7 cmHg (with dust bag)
- Vibration : 0.4 m/s2

APPLICATION:

- For sucking up dirt into the collection bag as well as for blowing surfaces clean
- With one-hand reversing switch
- Metal housing

FEATURES:

- **Easy Operation:** One-hand Suction & blow operation for convenient using
- **Great Control:** Lever-type trigger allows for smooth control and releases long time working fatigue
- **High Air Pressure:** Normal using allows in 90PSI - 150 PSI
- **Dust bag** with two layers of cloth with durable quality. Zipper at bottom of bag for quick removal of debris
- Three different tubes are included :
 1. Flat tube : for small space of car engine cleaning.
 2. Small-bore vacuum tube : for cleaning at any small space.
 3. Brush : Multi-angle brush attachment is ideal for vehicle interiors

ARW-9918

3 IN 1 FOAM CLEANING GUN KIT



One Gun for foam, water & blow gun function

- A smart car cleaning tool with several specialized accessories, designed for Multi-function car cleaning.
- Ideal for vehicle outside cleaning, including car surface, tire groove and wheel rim etc.
- The Jet distance can reach 6 Meter at 90PSI
- The recommended Air Composer is 3Hp and up
- Air Consumption: 17 CFM (480 L/min)

Jet Gun



Foam Cleaning Gun



Air Blow Gun / Duster



TS-9154

PULSATE COOLANT FLUSH TOOL SET

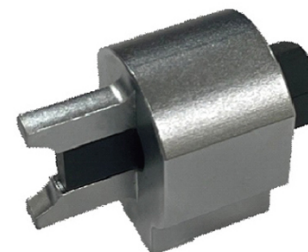


- Powerful flush cleans impurities in cooling system with a pulsating effect
- Adjustable trigger to provide pulsate flush and regular consistent-pressure flush functions
- Includes a conical adapter for fitting radiator filler necks
- 5/8" and 1/2" heater hose barbs and a small conical adapter for flushing heater side
- Connects to air compressor and garden hose for flushing the cooling system
- Special back pressure one-way valve to avoid excessive pressure accumulated in water hose



PC-9355

UNIVERSAL REMOVAL TOOL HUB BEARING CLOW SEPARATOR



- Wide range of uses Can be used to assist ball head disassembly, support frame disassembly, control arm disassembly...etc.
- Parallel pressure surfaces prevent the tool from accidentally popping out or slipping
- Application: Removal of suspension strut and bearing hinge mountings (for separating the suspension strut from the wheel bearing housing)
- Parallel pressure surfaces prevent the tool from accidentally popping out or slipping
- Expulsion: parallel pressure surfaces
- Output: Parallel pressure surface
- Spread the range: 5.0 - 11mm
- Wrench: 30mm
- Introduction:
Put the front end of the tool into the support frame, install the 17mm sleeve and turn it with the 30mm wrench to open the position, and the range can reach 5~11mm.



www.kaupa.com.tw

AUTO DENT REPAIR KIT

**BS-9018-HX & 9018 & 9018P
9018P-X & 9018X & 9018X-M**

BS-9018-HX



Content :

- 1.BMC
- 2.Glue Gun -BS-9013C
- 3.Glue Removal Spray 50cc - BS-9013B
- 4.Plastic Chisel -BS-9018-1
- 5.PDR Pulling Tool - BS-9019A-1 / 360 Degree Plastic Pulling Tool - BS-9019P
6. T-Bar Slide Hammer -BS-9013G / Alum. Slide Hammer- BS-9047-1 / Metal Slide Hammer- BS-9047
7. 12Pcs PDR Plastic Connection Tab - BS-9013A-N
8. 8Pcs PDR Glue Stick - BS-9013D
9. Mini Puller – BS-9381
10. Rubber Hammer Body Repair –BS-9046
11. Hand Dent Puller – BS-9380



• Master Automotive Paintless Dent Repair Kit used a special technique to repair dents in convenient way, with high molecular release agent Resin. Our repair kit release dents in your car quickly and easily without damaging its metal and paint.
• The operation is very easy. Read the instruction manual carefully before repairing. All marks are almost invisible after repairing.

BS-9018P-X

BS-9018P



BS-9018X

BS-9018X-M



BS-9018



BS-9047-1
Alum. Slide Hammer

BS-9047
Metal Slide Hammer

KAUPA
APP



Android



IOS



E-mail: service@kaupa.com.tw

KAUPA INTERNATIONAL CO.,LTD

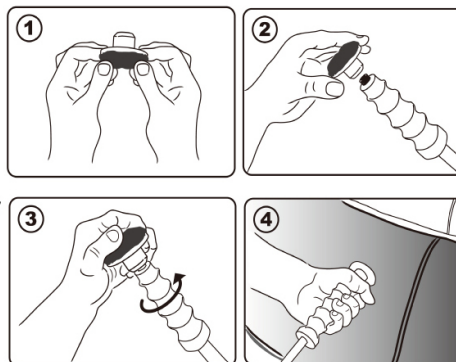
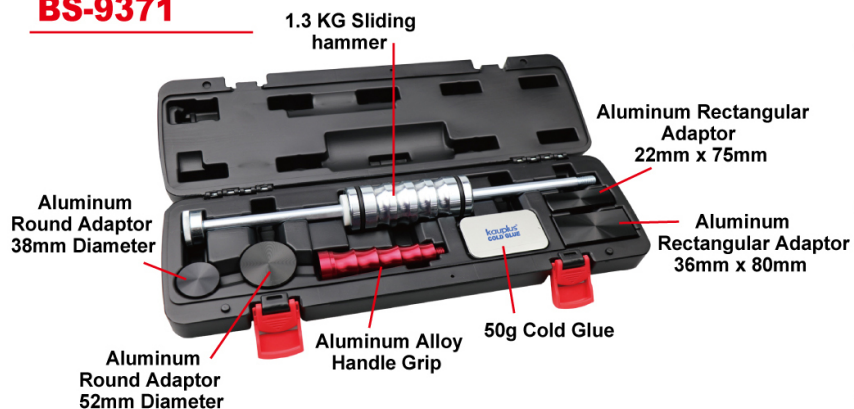


www.kaupa.com.tw

COLD ADHESIVE GLUE PULLING HAMMER SET

BS-9371 & 9371C-1 & 9371B

BS-9371



- It is reusable in use and practically does not run out.
- The special composition provides quick, strong adhesion, sufficient to perform a wide range of PDR tasks
- The composition is easy to use, even suitable for PDR beginners.
- Strong adhesion provides extreme traction combined with easy removal.
- Upon application the surface must be free of grease. Water and at least 20 degrees Celsius.
- The kit does not damage the body paintwork, is completely safe to use!
- The fastening system is suitable for our special design sliding hammer with aluminum alloy adaptor
- Instant strong adhesion! Low cost and quick payback!

BS-9371C-1

COLD ADHESIVE GLUE WITH FOUR ALUM. ALLOY ADAPTORS



**BS-9371C-1
PACKING**

BS-9371B

BLACK COLD ADHESIVE GLUE 50G



KAUPA
APP



Android



iOS

E-mail: service@kaupa.com.tw

KAUPA INTERNATIONAL CO.,LTD

ET-9376

PNEUMATIC DIESEL INJECTOR EXTRACTOR TOOL



- Pneumatic tool works with 6 bars air pressure.
- You can use this tool on Bosch, Delphi, Siemens, and Denso CR injectors which has solenoid coil or screw connection on top

ET-9371

HARMONIC BALANCER REMOVER



- This Balancer Remover is suitable for a variety of engines that are fitted with 3 & 6 Spoke Balancers.
- Applicable :
GM V8 Engines : 5.3Litre, 5.7LS1, 6.0 LS2, 6.2 LS3, 7.0 Litre Ford : Coyote 5.0 Supercharge
Chrysler / Dodge / Jeep : 3.5Litre, 3.7Litre V6, 4.7Litre, 5.7Litre, 6.1Litre

GT-9589

42MM RATCHETING PVC PIPE CUTTER WITH BLADE REPLACEMENT



OF-9077

FORD TRANSIT DIESEL FILTER WRENCH



- This tool is designed for the correct removal and fitment of the fuel filter housing, match the fuel canister designed filter.
- It eliminates slipping and damage of the fuel canister.
- Application:
Ford Transit 2.2 TDCI (2012~
- OEM No.:
207 1140 001 00

WR-9379

DR. 3/8" CROWBAR WRENCH ADAPTER



- Used with any 3/8" drive ratchet or open-end wrench.
- Feature: Lightweight, portable, and easy to use.
- Material: SCM440



*Also available for MANGANESE PHOSPHATE type – WR-9379A

PC-9356

STRUT COMPRESSOR



- Safely and efficiently removes and installs the spring-over steering stabilizer found on most self-steering axles.

Features:

- Eliminates dangerous ratchet strap and pry-bar methods.
- Built-in measuring device enables accurate installation.
- 3/4" hex drive engineered for use with up to a 1/2" impact.
- 15" to 25" center-to-center working range.

PC-9357

TOYOTA REAR-AXLE SUSPENSION BUSH REMOVE/INSTALLER



- This tool set is designed to remove and install the rear-axle
- Suspension bush of Toyota.

Application:

TOYOTA
(VOXY / VELLFIRE / ALPHARD / ESTIMA / CAMRY / HARRIER / NOAH / PREVIA / MARK / ISIS / WISH / PICNI / ALTIS / COROLLA / VIOS / VITZ)

PC-9358

SLACK ADJUSTER ROD PIN PRESS



- Spring-loaded plunger positions itself automatically over the slack adjuster rod clevis pin.
- Fits virtually all makes and models of automatic slack adjuster rod pins.

Application:

- Commonly found on class 6-8 transportation trucks and equipment. (Kenworth, Peterbilt, Freightliner, Mack, Volvo, etc.)



www.kaupa.com.tw

kauplus®

ST-9474

136PCS HAND TOOLS SET ALUMINUM TOOL CASE, HAMMER, SCREWDRIVER SET, PLIERS, SLEEVE SET, WRENCH SET



ST-9475

177PCS HOUSEHOLD TOOL SET WITH ALUMINUM TOOL TROLLEY



WR-9371

19PCS CROWFOOT WRENCH SET
3/8" DR. 8-9-10-11-12-13-14-15-16-17-18-19MM
1/2" DR-21-22-24-27-28-30-32MM



PLC-9078

4PCS- 6" & 4-3/4" PLIERS SET



Content:
• 4-3/4" water pump pliers
• 6" Slip Joint Pliers
• 6" Heavy Duty Diagonal Pliers
• 6" 4 in 1 Electrical Pliers



E-mail: service@kaupa.com.tw

KAUPA INTERNATIONAL CO.,LTD