

GT-9595

680PCS CAR PLASTIC AUTOMOTIVE PUSH RATAINER DOOR PANEL TRIM CLIPS SET



- Material: Made of Durable Nylon
- Sizes: 22 most Popular Sizes, 635 pcs /set

Accessories

- 1PC premium metallic stainless steel fastener rivet clips removal tool
 - 4PCS Car trim removal tools
 - 30PCS Sponge-cushion
 - 5PCS Longer plastic cable ties
 - 5PCS Shorter plastic cable ties
- Up to 680 pieces of retainer clips in a plastic box, allows to freely DIY your vehicle accessories at any time you wanted. It is definitely cheaper than going to the auto parts store.
- There are 'No-Slip' locking teeth on each tie for the securing of cables or wires in tight places. Great for electronic cord organization and management.
- 5 pcs Removal Tools
- 5 pcs useful car panel removal tools offers you an easy access to slide under confined clips and quickly remove those stubborn clips.

GT-9590

120MM WIRE DUCT CUTTER



GT-9595 CLIP SIZE & QTY DETAIL :



GT-9591

TYRE TRANSPORT DOLLY

- 3" TPR swivel caster x 2pcs
- 3" TPR brake caster x 2pcs

Dimension	Weight	Loading Capacity
640x640x145mm	2.88kg	120kg



Application:



GT-9592 SERIES

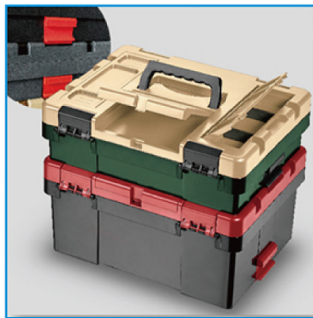
STACKABLE TOOL BOX – SMALL SIZE 488X378X240MM

(Also Available With Tray & Foam Inside)



S		Outside dimensions : 488 x 378 x 140 mm Internal dimensions : 452 x 332 x 92 mm
M		Outside dimensions : 488 x 378 x 240 mm Internal dimensions : 452 x 332 x 192 mm
L		Outside dimensions : 488 x 378 x 340 mm Internal dimensions : 452 x 332 x 292 mm

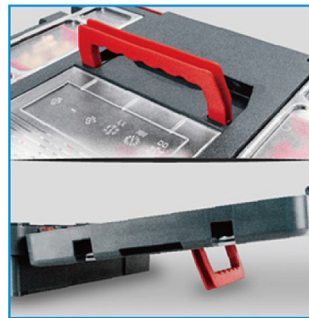
GT-9592 SERIES



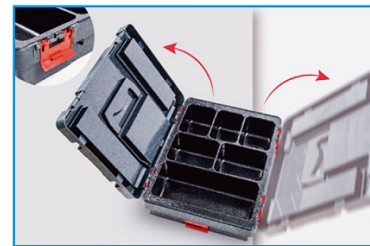
- Auto-connect side latches securely lock stacking boxes.



- Dividers & various compartments for customizable placement.



- Ergonomic handle can be used as supporting stand to avoid box from tilting.



- Removable lid for convenient and quick storage.



- Removable inner tray keeps items organized.



E-mail: service@kaupa.com.tw

KAUPA INTERNATIONAL CO.,LTD

ST-9461

1/2" DR. 5PCS SCREW EXTRACTOR SET



- Material: Cr-Mo
- Size: 17mm/19mm /21mm 75L

Design for:

- Use these dedicated sockets every time you remove damaged/distorted lug nuts with steel caps. These lug nuts become distorted due to improper leverage using the factory supplied tire iron.
- Removing over-torqued lug nuts during extreme cold/heat also distorts lug nut cap. Comes in a blow molded carrying case

PLC-9088

4PCS PLIERS SET PVC GRIP

Content:

- 4-3/4" Water Pump Pliers
- 5" Long Nose Pliers

- 6" Combination Pliers
- 5" Diagonal Cutting



WR-9373

2PCS 4 IN 1 DOUBLE BOX END WRENCH SET- METRIC, 120 THEETH, 6 PT. 8 x 10 -12x13mm 14 x 15 -17x19mm



WR-9374

2PCS 4 IN 1 DOUBLE BOX END WRENCH SET- SAE, 120 THEETH ANTI-SLIP, 6 PT. 5/16 x 3/8 -7/16 x 1/2, 9/16 x 5/8 -11/16 x 3/4





www.kaupa.com.tw

GO-THROUGH & TWIST SOCKET SET

**ST-9480 / ST-9481 / ST-9482 /
ST-9483 / ST-9484**

ST-9480 / 9481 / 9482



ST-9480

- 1/4" : 6, 8, 10, 11, 12 mm + 1 punch bar
- 1/2" : 13, 14, 15, 17, 19, 21, 24, 27 mm + 1 punch bar



ST-9481

- 1/2" : 10, 11, 12, 13, 14, 16, 17, 18, 19, 21, 22, 24, 27 mm + 1 punch bar



ST-9482

- 1/2" : 6, 7, 8, 9, 10, 11, 12, 13, 14, 15, 16, 17, 18, 19, 20, 21, 22, 24, 27 mm + 2 punch bars

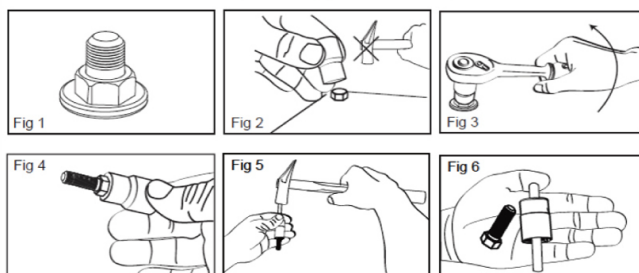
FEATURE: ST-9480~ST-9482:

- Twist sockets for removing worn or rusty nuts
- Includes a punch bar to punch stuck bolts/nuts out of socket
- For removal only. Do not use twist sockets to install new nuts
- Product NOT designed for air/impact wrench operation

FEATURE: ST-9483 & ST-9484:

- Set for removing worn or rusty nuts on studs or bolts
- For removal only. Do not use twist sockets to install new nuts
- Product NOT designed for air/impact wrench operation
- Use with an open-end wrench

ST-9480 & ST-9481 & ST-9482 Application Photo:



ST-9483 / 9484



ST-9483 GO-THROUGH NUT SET

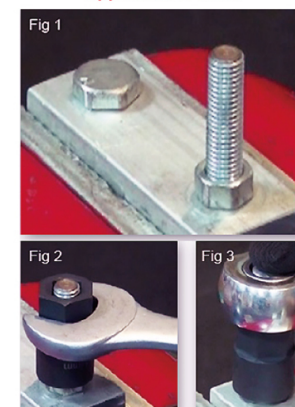
- 8, 10, 11, 12, 13, 14, 15, 16, 17, 19 mm



ST-9484 GO-THROUGH NUT SET

- 3/8" : 8, 10, 11, 12, 13, 14 mm + 1 punch bar
- 1/2" : 16, 17, 18, 19, 21 mm + 1 punch bar

Application Photo:



E-mail: service@kaupa.com.tw

KAUPA INTERNATIONAL CO.,LTD